

Fixture Type: _____

Catalog Number: _____

Project: _____

Location: _____

Trio Bathroom Sconce 3000K

Model & Size	Color Temp & CRI	Finish	Watt	LED Lumens	Delivered Lumens	Title 24
WS-51820 20"	3000K 90	CH Chrome	19.58W	1522	1061	Yes

Example: **WS-51820-CH**

DESCRIPTION

A subtly retro-inspired piece that's totally modern at the same time, Trio's evenly illuminated strips hover above a polished chrome backplate, creating an interesting yet understated accent in blissful bathrooms and commercial spas alike. Mount it over a vanity or vertically as a sconce.

FEATURES

- Three individual illumination chrome plated elements
- Driver concealed within the fixture
- 5 year warranty

SPECIFICATIONS

Color Temp:	3000K
Input:	120-277 VAC, 50/60Hz
CRI:	90
Dimming:	ELV: 100 - 5%, 0-10V: 100 - 5%, TRIAC: 100 - 5%
Rated Life:	50000 Hours
Mounting:	Can be mounted on wall in all orientations
Standards:	ETL, cETL, Title 24 JA8-2016 Compliant Damp Location Listed
Construction:	Aluminum hardware with three flexible composite diffusers

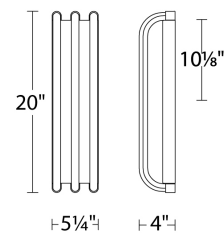


FINISHES



Chrome

LINE DRAWING



WS-51820

Fixture Type: _____

Catalog Number: _____

Project: _____

Location: _____

Trio Bathroom Sconce 3000K

Model & Size	Color Temp & CRI	Finish	Watt	LED Lumens	Delivered Lumens	Title 24
WS-51828 28"	3000K 90	CH Chrome	27.39W	2602	1821	Yes

Example: **WS-51828-CH**

DESCRIPTION

A subtly retro-inspired piece that's totally modern at the same time, Trio's evenly illuminated strips hover above a polished chrome backplate, creating an interesting yet understated accent in blissful bathrooms and commercial spas alike. Mount it over a vanity or vertically as a sconce.

FEATURES

- Three individual illumination chrome plated elements
- Driver concealed within the fixture
- 5 year warranty

SPECIFICATIONS

Color Temp:	3000K
Input:	120-277 VAC, 50/60Hz
CRI:	90
Dimming:	ELV: 100 - 5%, 0-10V: 100 - 5%, TRIAC: 100 - 5%
Rated Life:	50000 Hours
Mounting:	Can be mounted on wall in all orientations
Standards:	ETL, cETL, Title 24 JA8-2016 Compliant Damp Location Listed
Construction:	Aluminum hardware with three flexible composite diffusers

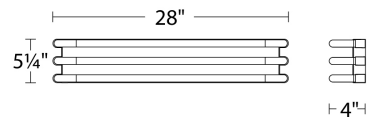


FINISHES



Chrome

LINE DRAWING



WS-51828

Fixture Type: _____

Catalog Number: _____

Project: _____

Location: _____

Trio

Bathroom Sconce 3000K

Model & Size	Color Temp & CRI	Finish	Watt	LED Lumens	Delivered Lumens	Title 24
WS-51837 37"	3000K 90	CH Chrome	34.31W	3351	2346	Yes

Example: **WS-51837-CH**

DESCRIPTION

A subtly retro-inspired piece that's totally modern at the same time, Trio's evenly illuminated strips hover above a polished chrome backplate, creating an interesting yet understated accent in blissful bathrooms and commercial spas alike. Mount it over a vanity or vertically as a sconce.

FEATURES

- Three individual illumination chrome plated elements
- Driver concealed within the fixture
- 5 year warranty

SPECIFICATIONS

Color Temp:	3000K
Input:	120-277 VAC, 50/60Hz
CRI:	90
Dimming:	ELV: 100 - 5%, 0-10V: 100 - 5%, TRIAC: 100 - 5%
Rated Life:	50000 Hours
Mounting:	Can be mounted on wall in all orientations
Standards:	ETL, cETL, Title 24 JA8-2016 Compliant Damp Location Listed
Construction:	Aluminum hardware with three flexible composite diffusers

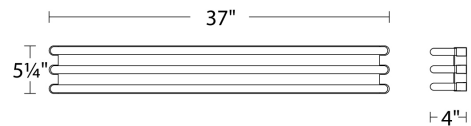


FINISHES



Chrome

LINE DRAWING



WS-51837