

BOULEVARD® RIGHT HEIGHT® ELONGATED ONE-PIECE TOILET WITH SEAT

- 2891.128**
 - **LXP® (Luxury Performance) toilet**
 - 12" (305 mm) rough-in
 - Right Height elongated siphon action bowl with smooth-sided, concealed trapway
 - High efficiency, ultra-low consumption (1.28gpf/4.8 Lpf), **utilizes 20% less water**
 - **Meets EPA WaterSense® criteria**
 - Includes **EverClean®** surface which inhibits the growth of stain and odor causing bacteria, mold, and mildew on the surface
 - PowerWash® rim scrubs bowl with each flush
 - 16-1/2" (419 mm) rim height for accessible applications
 - 2" (51 mm) trapway
 - 3" (76 mm) flush valve
 - Chrome trip lever
 - Includes Duroplast™ slow-close seat and cover with concealed seat ring and easy lift-off feature for simple removal and reattachment for cleaning
 - Two color-matched bolt hole covers
 - 10-year warranty
 - **Design coordinates with Studio® and Boulevard® lavatories**
 - Best 1,000g MaP flush score**

- 2891.813** Same as above except trip lever on right hand side
- 5025A.65G** Preferred Seat: Telescoping Elongated Luxury Seat

Nominal Dimensions:
 29-3/4" x 14-1/2" x 30-1/2"
 (756 x 368 x 778mm)

Fixture only, supply by others

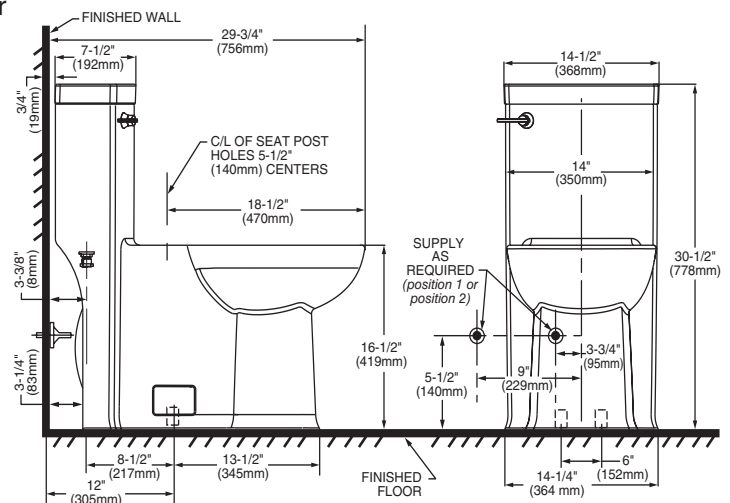
Compliance Certifications - Meets or Exceeds the Following Specifications:

- ASME A112.19.2 / CSA B45.1
- US EPA WaterSense® Specification for HETs

To Be Specified:

- Color:
 - White Linen
- Supply with Stop:

** Maximum Performance (MaP) testing performed by IAPMO R&T Lab. MaP Report conducted by Gauley Associates Ltd. and Koeller and Company.



IMPORTANT: Water supply on the wall is required at 3-3/4" or 9" from centerline of the toilet (see rough-in). First suggested position is hidden behind the toilet. The geometry of the toilet gives space for this installation. The second suggested position is next to the toilet. Between these two positions, the space for the supply between wall and toilet is limited to 3-1/4". In this case, check your supply and hose dimensions.

NOTES:

THIS TOILET IS DESIGNED TO ROUGH-IN AT A MINIMUM DIMENSION OF 305MM (12") FROM FINISHED WALL TO C/L OF OUTLET. SUPPLY NOT INCLUDED WITH FIXTURE AND MUST BE ORDERED SEPARATELY.
 * DIMENSION SHOWN FOR LOCATION OF SUPPLY IS SUGGESTED.

IMPORTANT: Dimensions of fixtures are nominal and may vary within the range of tolerance established by ANSI Standard A112.19.2. These measurements are subject to change or cancellation. No responsibility is assumed for use of superseded or voided pages.

MEETS THE AMERICANS WITH DISABILITIES ACT GUIDELINES AND ICC ANSI A117.1 REQUIREMENTS FOR ACCESSIBLE AND USABLE BUILDING FACILITIES-CHECK LOCAL CODES.

