

Central Brass

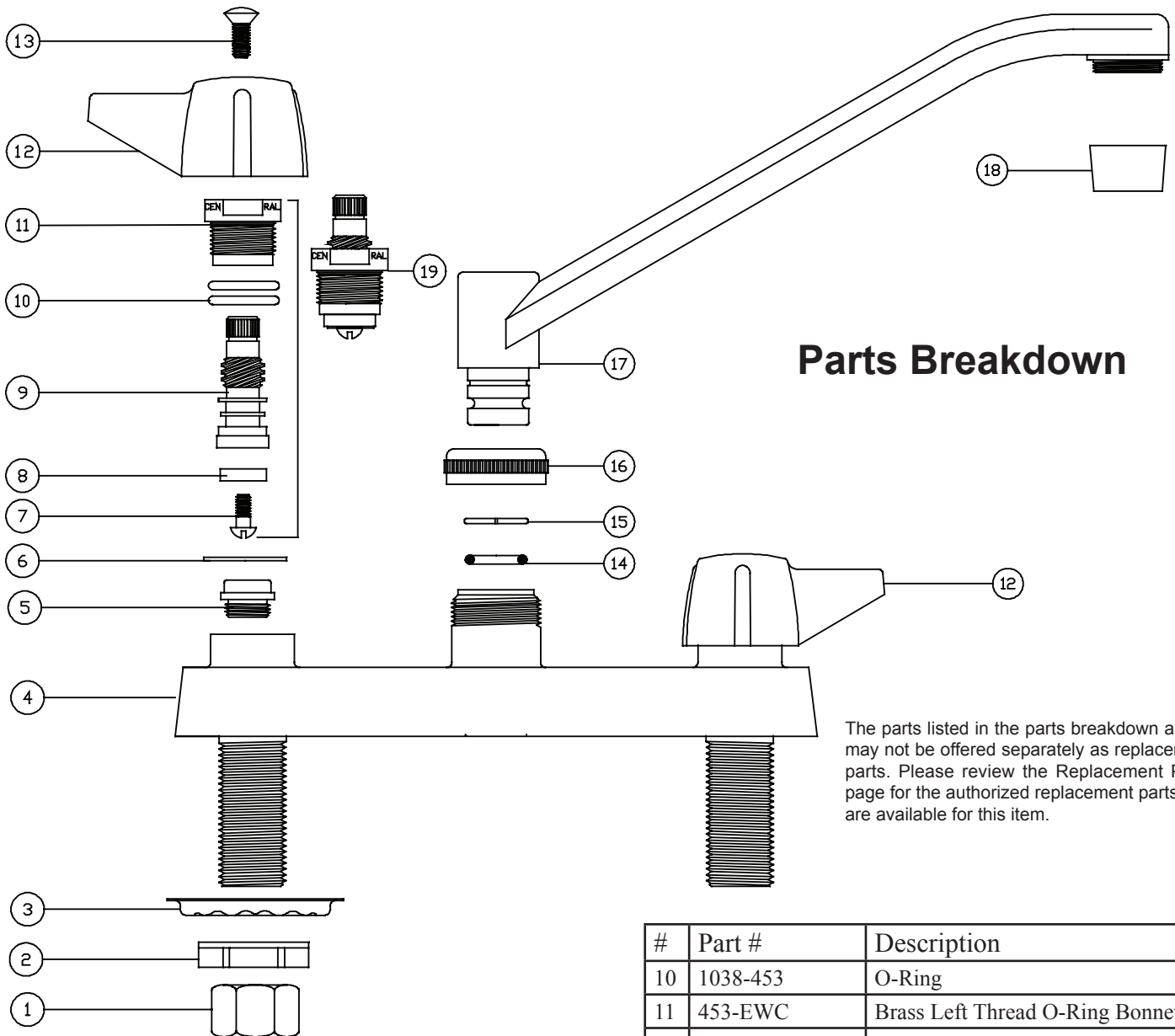
COMPANY

Brecksville, Ohio 44141

Phone: (216) 883-0220 Fax: (440) 526-5745

www.CentralBrass.com

**MODEL NO. 0127-A
KITCHEN TOPMOUNT**



Parts Breakdown

The parts listed in the parts breakdown above may not be offered separately as replacement parts. Please review the Replacement Parts page for the authorized replacement parts that are available for this item.

#	Part #	Description
1	4015-BARP	Brass Coupling Nut
2	7133-AZ	Zinc Dichromate Locknut
3	54	Steel Crowfoot Washer
4	2158	Brass Faucet Body
5	263-BC	Bronze Seat
6	1028-Y	Nylon Gasket
7	104	Brass Seat Washer Screw
8	901-WNN	Seat Washer
9	453-FL	Brass Left Thread O-Ring Stem
9	453-FR	Brass Right Thread O-Ring Stem

#	Part #	Description
10	1038-453	O-Ring
11	453-EWC	Brass Left Thread O-Ring Bonnet
11	453-EWH	Brass Right Thread O-Ring Bonnet
12	523-C	Handle Indexed "C"
12	523-H	Handle Indexed "H"
13	107-F	Brass Phillips Head Screw
14	1038-KN	O-Ring
15	166-FN	Stainless Steel Snap Ring
16	PF-782-D	Brass Spout Nut
17	365-D	Brass Swivel "D" Spout
18	30-M	Female Aerator
19	SU-453-EL	Left Thread O-Ring Stem Assembly
19	SU-453-ER	Right Thread O-Ring Stem Assembly