

## Instructions for Models:

VS-113010  
VS-113011  
VS-113014  
VS-112007

### Need Help?

For additional assistance or service call:

**SPEAKMAN** Company  
400 Anchor Mill Road  
New Castle, DE 19720

PHONE: 800-537-2107  
EMAIL: [customerservice@speakmancompany.com](mailto:customerservice@speakmancompany.com)  
WEB: [www.speakmancompany.com](http://www.speakmancompany.com)

VS-11XXXX-IOM-R1

## What You Need To Know:

### Tools:

Required:

Adjustable  
Wrench



Teflon  
Tape



### Important Notes:

Be sure to read instructions thoroughly before beginning installation. Do not overtighten any connections or damage may occur.

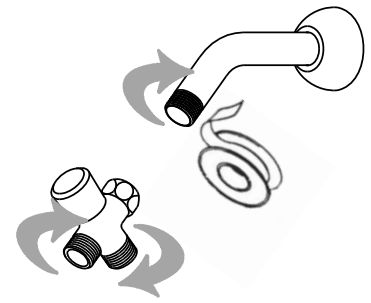
### Safety Tips:

Cover your drain to prevent loss of parts.

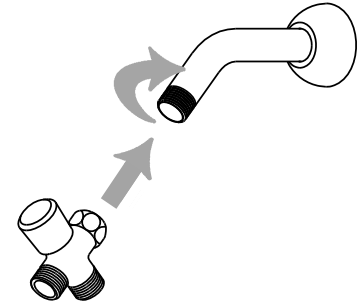
### Maintenance:

Keep your Speakman product looking new by cleaning it periodically with a soft cloth. Avoid abrasive cleaners, steel wool, and harsh chemicals as these will dull the finish and void your warranty.

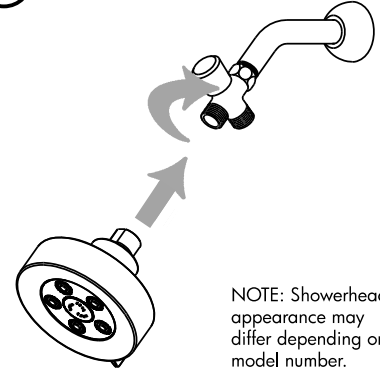
1 Apply Teflon Tape in a clockwise direction to all threaded connections.



2 NOTE: Inspect Diverter to be sure Sealing Washer is in place within Coupling Nut.  
Thread Coupling Nut of Diverter onto Shower Arm. Tighten with Adjustable Wrench.



3 Thread fixed Showerhead onto front outlet of Diverter. Tighten with Adjustable Wrench.



NOTE: Showerhead appearance may differ depending on model number.

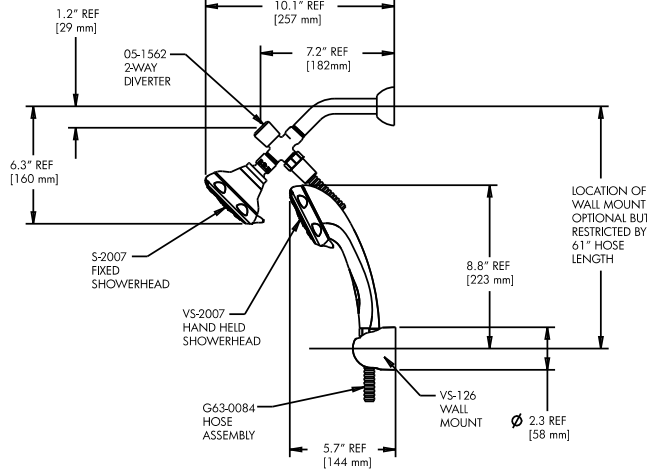
**7** Insert Hand Shower into Wall Mount. Two positions possible (Vertical and Angled).

**8** Turn on water supply and check all threaded connections for leaks. If leaks occur tighten connection with an adjustable wrench or by hand.

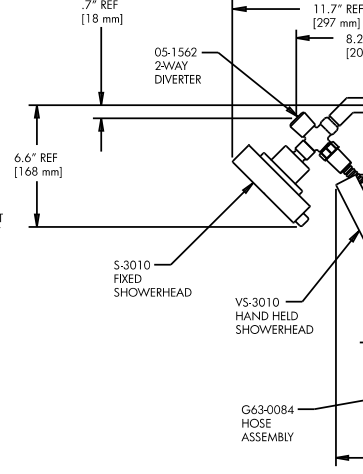
**9** Check Diverter for proper operation by pulling up on knob to activate Hand Shower. Then press down on knob to activate Fixed Showerhead.

**Rough-In**

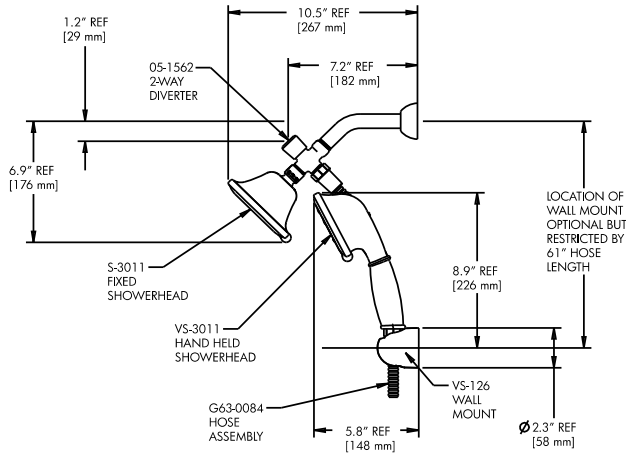
**VS-112007-RI**



**VS-11**



**VS-113011-RI**



**VS-11**

