

Haunted Hill Farm™



HHFINMUM065-1LA

6.5-ft. Inflatable Headless Mummy with Arm Motion & White LED Lights



HHFINPUMP010-2L

10-ft. Inflatable Pumpkin with Black Hat & Red LED Fire Lights



HHFINGHST010-1LA

10-ft. Inflatable Shaking Ghost with Flashing Green LED Lights



HHFINMUM065-1LA

10-ft. Inflatable Stacked Pumpkin Duo with Black Hat & White LED Lights



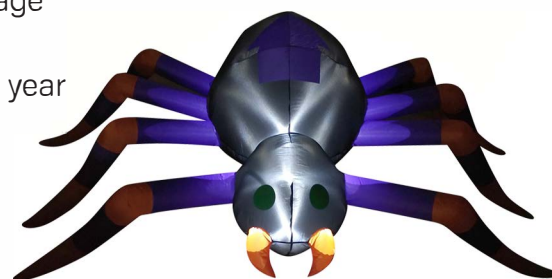
HHFINPUMP06-1LA

6-ft. Headless Pumpkin Inflatable with Arm Motion & White LED Lights

Enter, if you dare, into the horrifying world of Haunted Hill Farm. Our life-size, animated creepy creatures and massive outdoor inflatables (ranging from 6' to 20' high) are just what you need to turn your home into the scariest haunted house on the block!

Our inflatables will be the centerpiece of your own personal haunted house. All inflatables are pre-lit with LED lights and some have an animatronic feature. It's the perfect trick to give your trick-or-treaters a fright without giving them nightmares. The treat is how quick and easy it is to set up with included lawn stakes and ropes for secure installation. The inflatable is outfitted with an internal fan so all you need to do is unpack it, plug it in, stake it down and you're ready for some scary fun all Fall long. Created out of durable, weather resistant polyester, you won't need to worry about holes. Your inflatable will last year after year and scare after scare.

- Pre-lit inflatable includes adapter, ropes and lawn stakes
- Self-inflates in seconds and deflates quickly for convenient storage
- Illuminated by LED bulbs with 16,000 hours of bulb life
- Durable polyester is UV and weather resistant for use year after year
- No assembly required
- 1 year warranty with superior customer service



HHFINSPIDER08-1L

8-ft. Inflatable Spider with White LED Lights

877-397-5144

www.HauntedHillFarm.com