

SPEAKMAN® SM-5020

SentinelPro™ Thermostatic/Pressure Balanced Shower Combination

FEATURES:

- Speakman SentinelPro concealed anti-scald thermostatic/pressure balance shower/bath valve & combinations.
- Chrome plated Brass wall plate with metal index.
- Chrome plated metal lever handle.
- Adjustable temperature limit stop (TLS).
- Factory set @ 110 F°. Brass body with integral spring check stops.
- Dual function thermostatic/pressure balance cartridge.
- Can be installed back-to-back. Includes rough-in template.
- S-2280 Anystream® wall mounted showerhead with flow control device reduces flow to 2.5 gpm (9.5 L/min) maximum.
- Four port valve with ½ in. female Copper sweat and ½ in. NPT male inlets and outlets.
- Furnished with ½ in. cap.
- Valve construction is Forged Brass Body and Brass Bonnet.
- Maximum capacity is 4.3 gpm +/- .2 @ 45 psi.
- Maximum Hot Water Supply Temperature is 185°F. Minimum Hot Water Supply Temperature is 5°F above set point.
- Maximum operating temperature is 120°F.
- Valve Temperature Set Point is 110°F (Based on 115-120°F hot & 55-65°F Cold).
- Maximum Static Pressure is 125 psi. Minimum flow (for +/-3°F performance) meets ASSE 1016 to 1.5 gpm (5.7 L/min).
- Vandal-resistant standard.



FINISH:



PC

COMPLIANCE:

- ASSE 1016 & ASME 112.18.1/CSA B125.1 standards (SM-5000 Combo)

OPTIONS: Add suffix to model

- Anchor plate assembly -AP
- Ball joint -BJ
- Contractor Packs Available

WARRANTY:

- 5 year limited

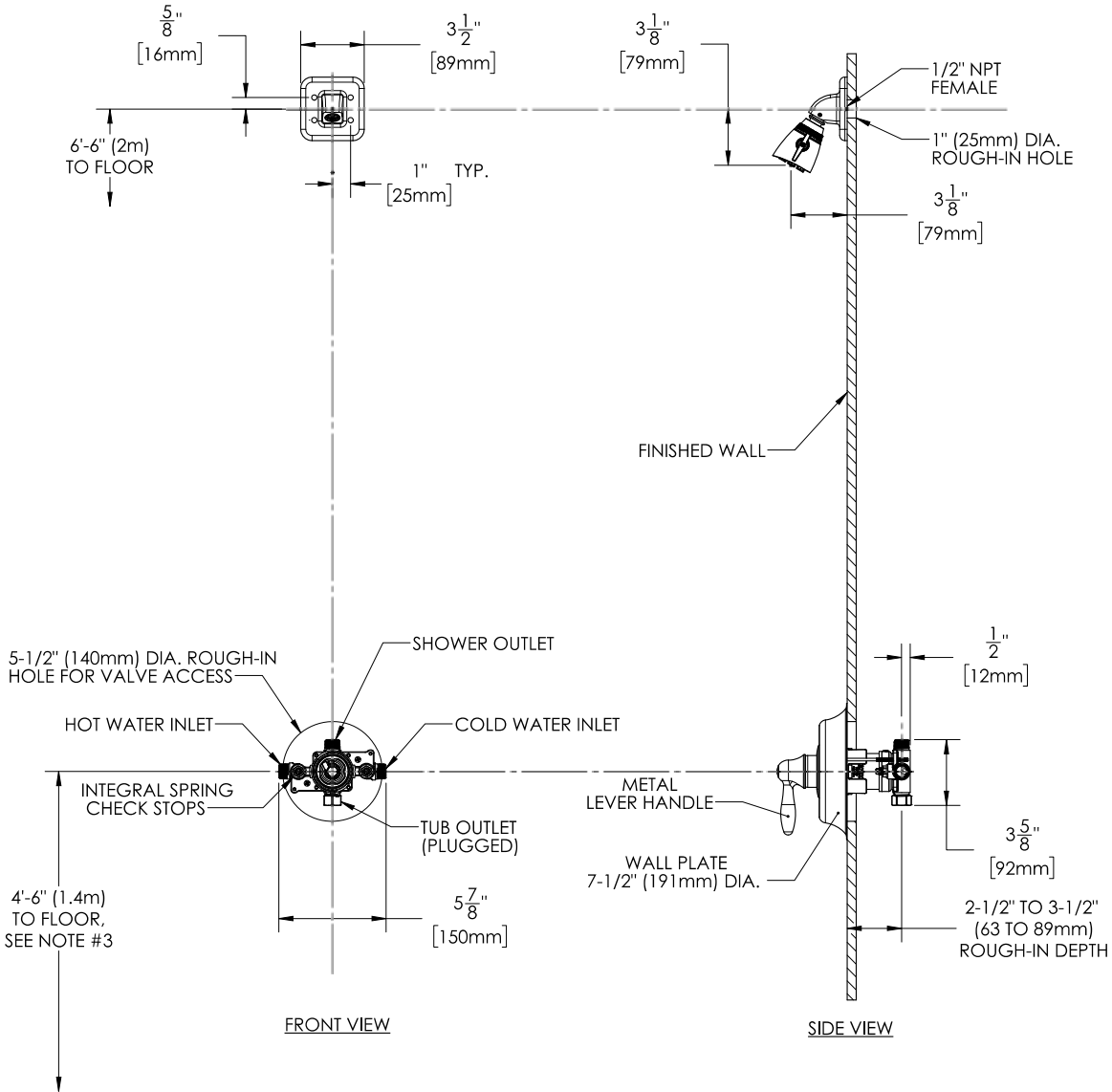
Architect/Engineer Approval Space:

SPEAKMAN
400 ANCHOR MILL ROAD
NEW CASTLE, DE 19720

P: 800-537-2107
F: 800-977-2747
W: WWW.SPEAKMAN.COM
R: JANUARY 2018

NOTE: 1. All dimensions are in inches (millimeters) unless otherwise specified and are subject to change without notice.
 2. Unless otherwise specified all inlets and outlets are 1/2" female copper sweat and 1/2" male NPT. 3. For ADA mounting locations consult ADAAG, ANSI A117.1, or state regulations.

DIMENSIONS:



Architect/Engineer Approval Space:

SPEAKMAN
 400 ANCHOR MILL ROAD
 NEW CASTLE, DE 19720

P: 800-537-2107
 F: 800-977-2747
 W: WWW.SPEAKMAN.COM
 R: JANUARY 2018