

Neo™ Shower Combination

FEATURES:

- Neo Shower Head S-3010
- Neo Arm and Flange S-2540
- Neo Pressure Balance Valve and Trim SM-1400-P
- Neo Tub Spout S-1557
- 2.5 gpm (9.5 L/min) flow rate

FINISH:



PC BN

COMPLIANCE:

- ASME A112.18.1/CSA B125.1 compliant

MODELS:

- SM-1430-P: with S-1557 tub spout
- SM-1410-P: without S-1557 tub spout

WARRANTY:

- Limited Lifetime Warranty (shower head consumer use)
- 1 Year Limited

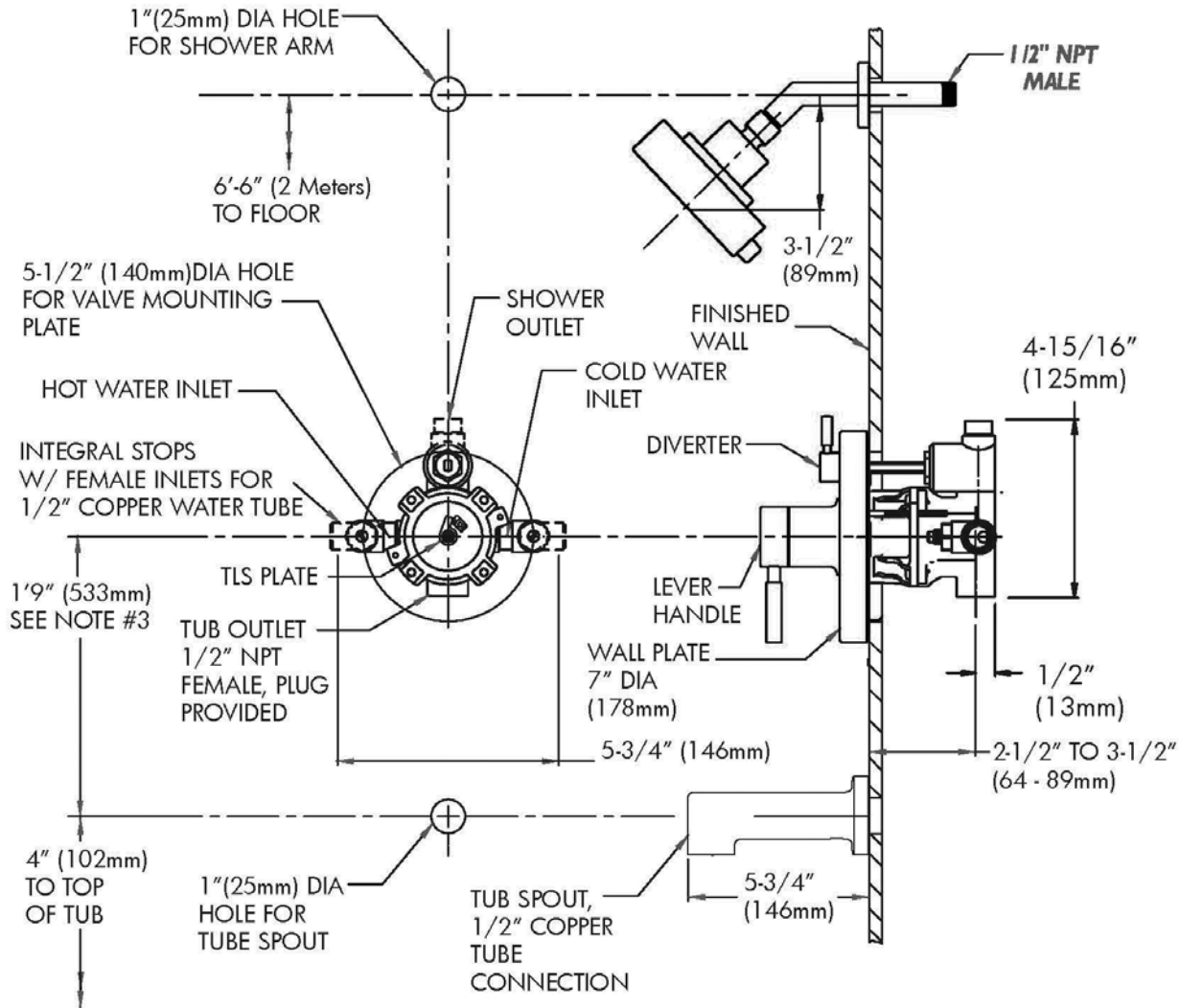


Architect/Engineer Approval Space:

SPEAKMAN
 400 ANCHOR MILL ROAD
 NEW CASTLE, DE 19720

P: 800-537-2107
 F: 800-977-2747
 W: WWW.SPEAKMAN.COM
 R: OCTOBER 2017

DIMENSIONS: NOTE: 1. All dimensions are in inches (millimeters) unless otherwise speci'ed and are subject to change without notice. 2. Unless otherwise speci'ed, all inlets and outlets are 1/2" female copper sweat. 3. For ADA mounting locations, consult ADAAG, ANSI A117.1, or static regulations Contractor pack valves & trim kits available.



Architect/Engineer Approval Space:

SPEAKMAN
400 ANCHOR MILL ROAD
NEW CASTLE, DE 19720

P: 800-537-2107
F: 800-977-2747
W: WWW.SPEAKMAN.COM
R: OCTOBER 2017