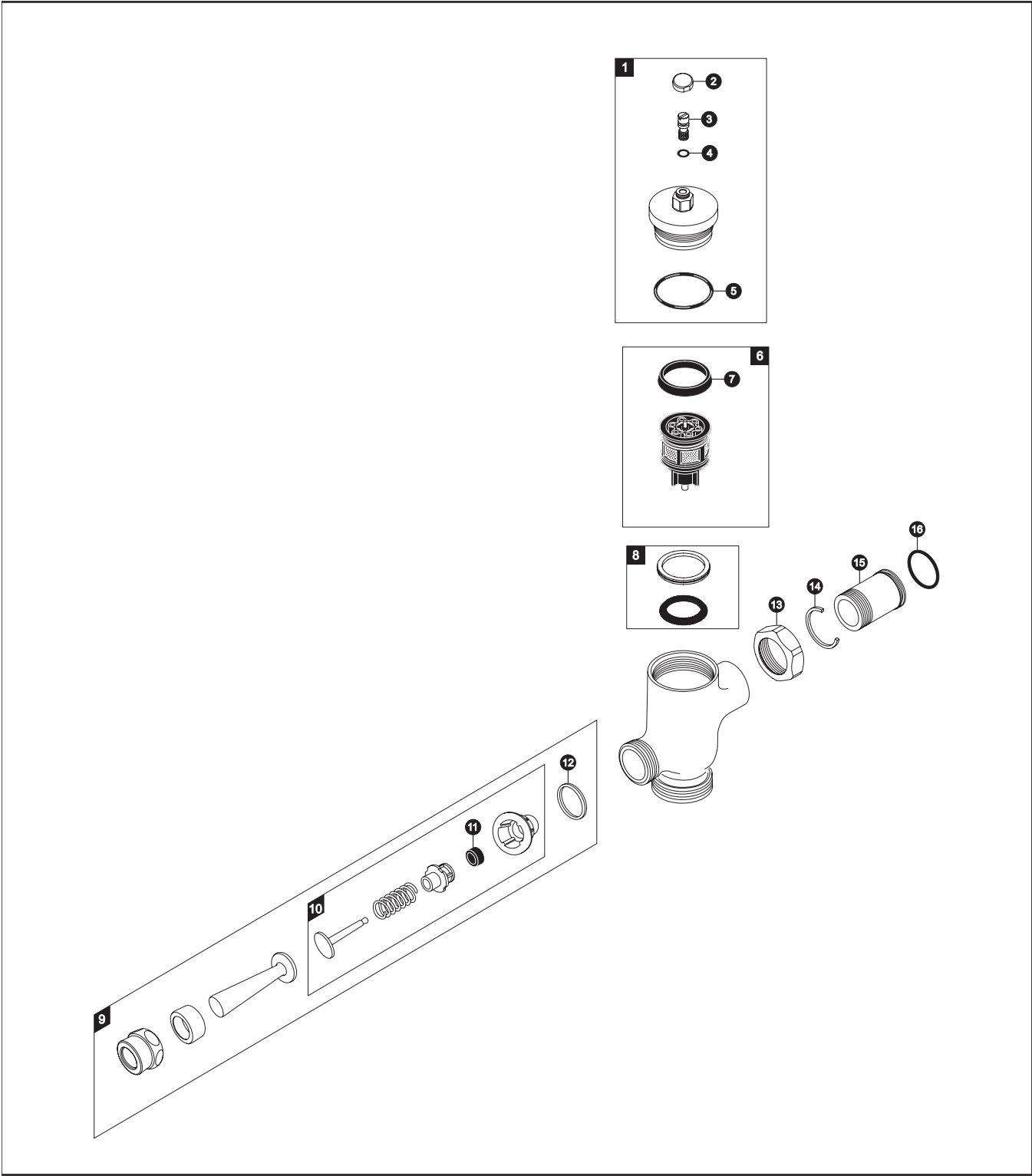


TMU1NNC-12  
TMU1NNC-22  
TMU1NNC

**Manual Urinal Flush Valve, Exposed - 1.0 GPF  
Non-Hold Open**



## Manual Urinal Flush Valve, Exposed - 1.0 GPF Non-Hold Open

Item	Part	Description
1	TH305SV119	Valve Cover Set (1.0 GPF)
2	TH305SV108	Screw Cap (MFV & Angle Stop)
3	TH305SV110	Adjustment Screws (Toilet)(10 Pieces)
4	TH305SV111	O-Rings (Cap Screw)(10 Pieces)
5	TH305SV112	O-Rings (Valve Guide)(10 Pieces)
6	TH323V102R	Piston Valve Assembly
7	TH305SV103	U-Packing (For Piston)(10 Pieces)
8	TH321	Seal Washer Kit
9	TH305SV1	Lever Assembly
10	THY326	Push Button Assembly
11	TH302RV100	Gaskets (U-Packing)(10 Pieces)
12	TH305SV104	Fiber Washers (10 Pieces)
13	TH305SV113	Nut
14	TH305SV105	Locking Rings (10 Pieces)
15	TH305SV114	Tail Piece
16	TH305SV106	O-Rings (Tail Piece)(10 Pieces)

### Vacuum Breaker Sets

VB9CP-12	Exposed - Top Spud (3/4" Outlet)
VB9CP-22	Exposed - Top Spud (1-1/4" Outlet)

### Notes

For additional information, refer to the individual vacuum breaker parts sheets.

### Product Number Explanations

#### Flush Valve

(T) Fitting  
 (M) Manual  
 (U) Urinal 1.0  
 (1) Exposed  
 (N) Non-Hold Open  
 (N) Neutral Rough-In  
 (C) Chrome Finish  
 (1) 3/4" Outlet  
 (2) Top Spud

#### Flush Valve

(T) Fitting  
 (M) Manual  
 (U) Urinal 1.0  
 (1) Exposed  
 (N) Non-Hold Open  
 (N) Neutral Rough-In  
 (C) Chrome Finish  
 (2) 1-1/4" Outlet  
 (2) Top Spud