

NOTES:

- ① 1. FIT / FORM / FUNCTION SHALL FOLLOW PS-E.008.
- ② 2. ORIENTATION OF ITEM ④ AND ITEM ⑥ IS SHOWN IN FIGURE 1 AND FIGURE 2.

BILL OF MATERIAL (CURRENT LEVEL)

ITEM	PT/ASSY	DESCRIPTION	TYPE	QTY.
1	80185	ESCUTCHEON	PART	1
2	92070	SCRW, #14 X 2 SLT FLT HD SS	PART	1
3	91368	WALL ANCHOR PLASTIC, 12-1/4	PART	1
② 4	2-606	HANDSPRAY HOLDER	ASSEMBLY	1
5	91766	O-RING, #2-029, 50 DURO	PART	1
② 6	92242	SCRW, 10-24 X 1/4 SKT HD CONE PT SS	PART	1

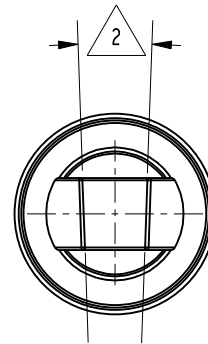
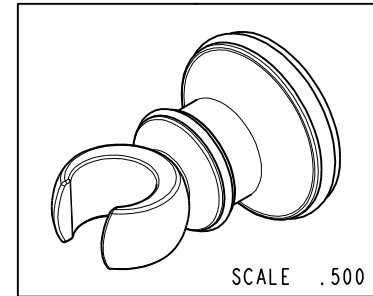
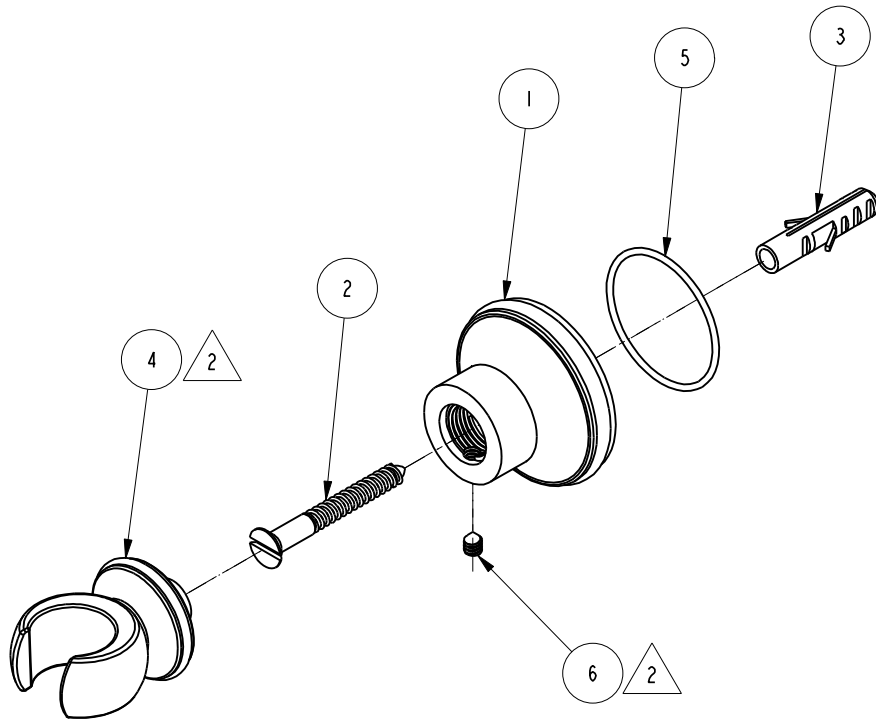


FIGURE 1

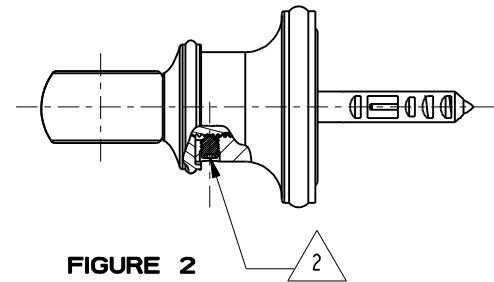


FIGURE 2

ZONE	REV	DESCRIPTION	DATE	APPROVED
-	C	EN-3722	02/08/19	C.G.
-	B	EN-1426	07/15/10	-
-	A	EN-1206	03/20/09	-
-	-	EN-1129	12/02/08	-

COPYRIGHT 2005 BRASSTECH, INC. THESE DRAWINGS AND THE DESIGNS DEPICTED HEREIN ARE THE PROPRIETARY PROPERTY OF BRASSTECH. ANY USE OR REPRODUCTION IS SUBJECT TO THE EXPRESS APPROVAL OF BRASSTECH. UNAUTHORIZED USE IS STRICTLY PROHIBITED. ALL RIGHTS RESERVED.

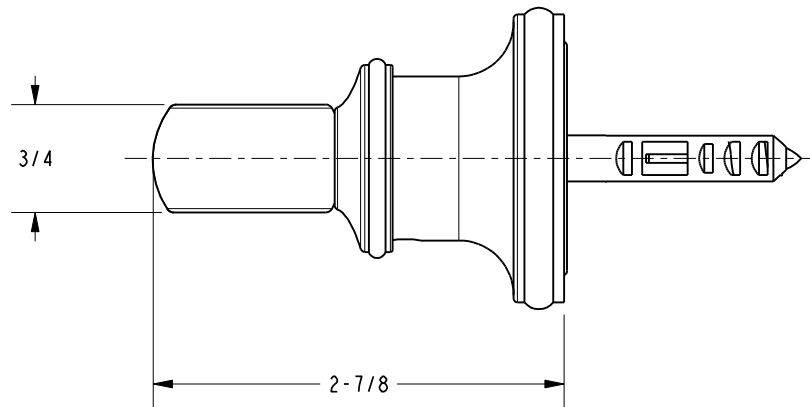
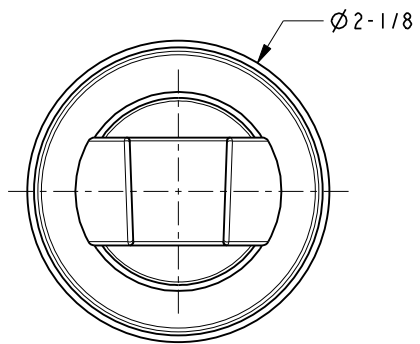
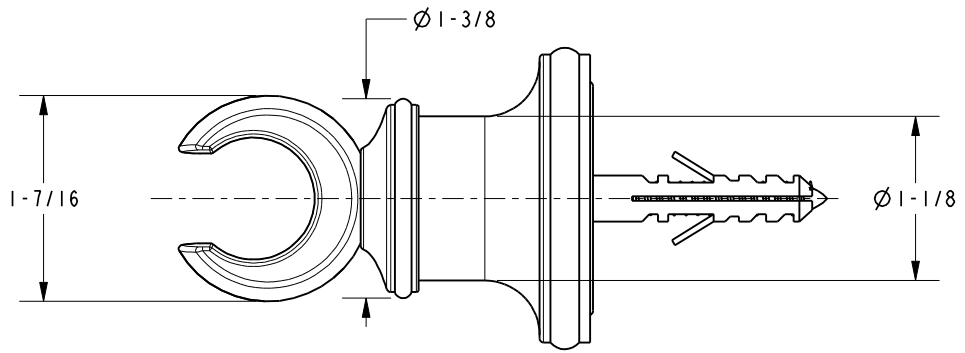
TESTING	-	-	-
ASSEMBLY	-	-	-
PLATING	-	280N	280N
POLISHING	-	NEXT ASSY	USED ON
MACHINING	-	APPLICATION	
TOOLING FIXTURE #	REMOVE ALL BURRS AND SHARP EDGES		

UNITS ARE: INCHES [MM]		
TOLERANCES ARE:		
FRACTIONS DECIMALS	ANGLES	
±1/16"	±°	
.x ±.1 [2.5]		
.xx ±.06 [1.5]		
①.X.XXX DENOTES CRITICAL DIMS. ALL THREADS ARE CRITICAL		
DRAWN	JINSON	02/08/19
CHECKED	C.G.	02/08/19
APPROVED	C.G.	02/08/19

BRASSTECH 2001 CARNEGIE AVE. SANTA ANA, CA 92705 (949) 417-5207
INCORPORATED

HANDSPRAY WALL MOUNT ASM

DWG NO. 297	REV C
SCALE .500	REF. -
SHEET 1	OF 2



BRASSTECH		2001 E. CARNEGIE AVE. SANTA ANA, CA 92705 (949) 417-5207	
DWG NO.	297	REV	C
SCALE	.750	REF.	-
		SHEET	2 OF 2