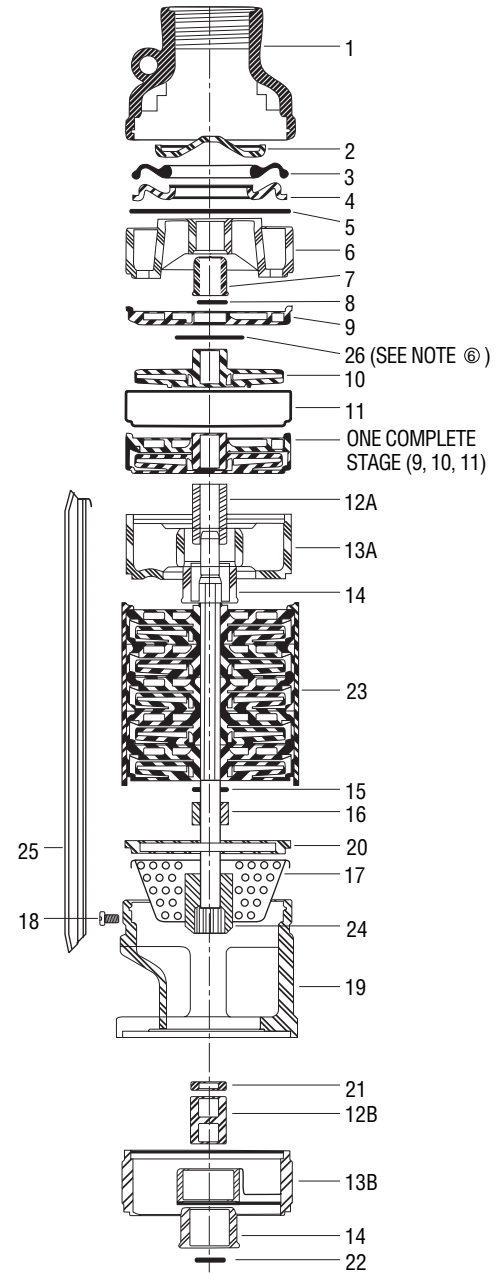


MODEL

GS

Item No.	Description	Current Models								
			5GS ^(H88)	5GS ^(H97)	Old Style 5GS [Ⓒ]	7GS	10GS	13GS	18GS	25GS
	NUMBER OF STAGES HORSEPOWER	½R	9	9	11	7	5	—	—	—
		½	12	12	15	10	7	5	—	—
		¾	15	15	20	13	10	7	6	—
		1	20	20	25 [Ⓐ]	17	12	10	8	7
		1½	26	26 [Ⓐ]	34 [Ⓐ]	22	17	12	11	9
		2	—	—	—	27	20	17	14	11
		3	—	—	—	34 [Ⓐ]	27 [Ⓐ]	21	19	15
	5	—	—	—	—	42 [Ⓐ]	—	30 [Ⓐ] ②	25 [Ⓐ] ⑤	
1	Discharge head	7K1326								
2	Check valve poppet	7K1366								
3	Check valve seal	7K1368								
4	Check valve seat	7K1365								
5	C. V. retaining ring	7K1364								
6	Bearing spider – upper	7K1372								
7	Bearing	7K1740								
8	Klip ring – upper	7K817								
9	Diffuser	7K1750	7K9	7K995	7K17	7K20				
10	Impeller	7K1837	7K1749	7K8	SEE [Ⓒ]	7K35	7K16	7K1334	7K19	
11	Bowl	7K1838	7K1751	7K7	7K478			7K858	7K18	
12A [Ⓐ]	Int. shaft sleeve	7K209								
12B [Ⓐ]	Int. shaft sleeve	—	—	7K1490			—	7K1490	—	
13A [Ⓐ]	Int. bearing	7K1371		7K1501	7K1371		—	7K1371		
13B [Ⓐ]	Int. bearing	—	—	7K1499			—	7K1499	—	
14 [Ⓐ] ②	Mid bearing	7K1369			—	7K1369				
15	Shim	7K155								
16	Lower shaft sleeve	7K1336	7K1520	7K1336			7K1336			
17	Inlet strainer	7K1370								
18	Screws – cable guard	13K91								
19	Motor adapter	7K1363								
20	Adapter ring	—	—	7K1500	—	—	—	—	—	
21	Spacer – mid (5GS15)	—	—	7K1552	—	—	—	—	—	
22 [Ⓐ]	Klip ring – lower	—	—	7K1553			—	7K1553		
23	Casing HORSEPOWER	½R	7K1527	7K1429	7K1433	7K1429	7K1426	—	—	—
		½	7K1435	7K1430	7K1566	7K1433	7K1427	7K1426	—	—
		¾	7K1840	7K1434	7K1442	7K1437	7K1431	7K1427	7K1429	—
		1	7K1841	7K1507	7K1508	7K1443	7K1434	7K1431	7K1431	7K1430
		1½	7K1754	7K1753	7K1452 7K1509	7K1449	7K1440	7K1434	7K1437	7K1435
		2	—	—	—	7K1451	7K1444	7K1440	7K1441	7K1439
		3	—	—	—	7K1453	7K1450	7K1446	7K1448	7K1445
24	Shaft and coupling HORSEPOWER	½R	7K1033	7K1361	7K1523	7K1361	7K1358	—	—	—
		½	7K1377	7K1374	7K1524	7K1376	7K1360	7K1358	—	—
		¾	7K1831	7K1377	7K1383	7K1380	7K1375	7K1360	7K1359	—
		1	7K1458	7K1072	7K1388	7K1384	7K1377	7K1375		7K1374
		1½	7K1839	7K1780	7K1519 7K1392	7K1389	7K1457	7K1377	7K1380	7K1378
		2	—	—	—	7K1391	7K1458	7K1457	7K1382	7K1381
		3	—	—	—	7K1462 7K1213	7K1390	7K1386	7K1387	7K1385
25	Cable guard HORSEPOWER	½R	7K1400	7K1398	7K1403	7K1398	7K1396	—	—	—
		½	7K1405	7K1400	7K1525	7K1403	7K1397	7K1396	—	—
		¾	7K1409	7K1404	7K1526	7K1406	7K1401	7K1397	7K1398	—
		1	7K1415	7K1424	7K1432	7K1413	7K1404	7K1401		7K1400
		1½	7K1373	7K1755	7K1422	7K1419	7K1410	7K1404	7K1406	7K1405
		2	—	—	—	7K1421	7K1414	7K1410	7K1411	7K1409
		3	—	—	—	7K1423	7K1420	7K1416	7K1418	7K1415
5	—	—	—	—	7K1635	—	7K1425	7K1659		



- Ⓐ Indicates model with one intermediate bearing, 18GS50 old style casing 7K1455, shaft and coupling 7K1395, cable guard 7K1425 (single casing design).
- Ⓑ Indicates model with split case pump.
- Ⓒ For ½ HP – 1½ HP use impeller 7K1343. For 2 HP – 3 HP use impeller 7K994.
- Ⓓ Old style 5GS through G97, new design started H97.
- Ⓔ Changed to 25 stages Nov. 1997 (L97). 26 stage casing 7K1454, shaft 7K1394, cable and coupling guard 7K1423.
- Ⓕ For index number 26, use part no. 7K15 for the following models: 10GS20, 10GS30, 10GS50, 18GS50, 25GS50, 5GS15, 5GS20, 7GS20, 7GS30.