

4

3

2

1

D

D

C

C

B

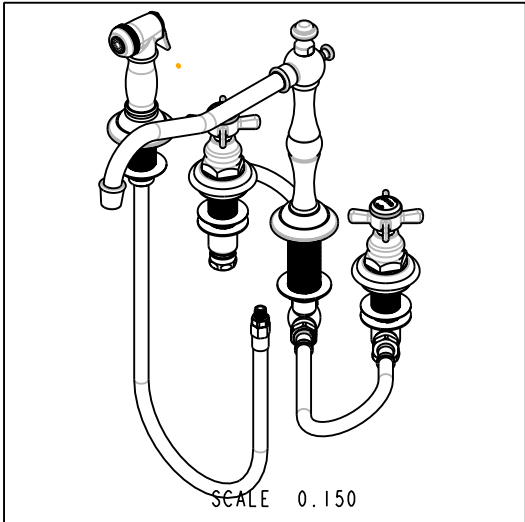
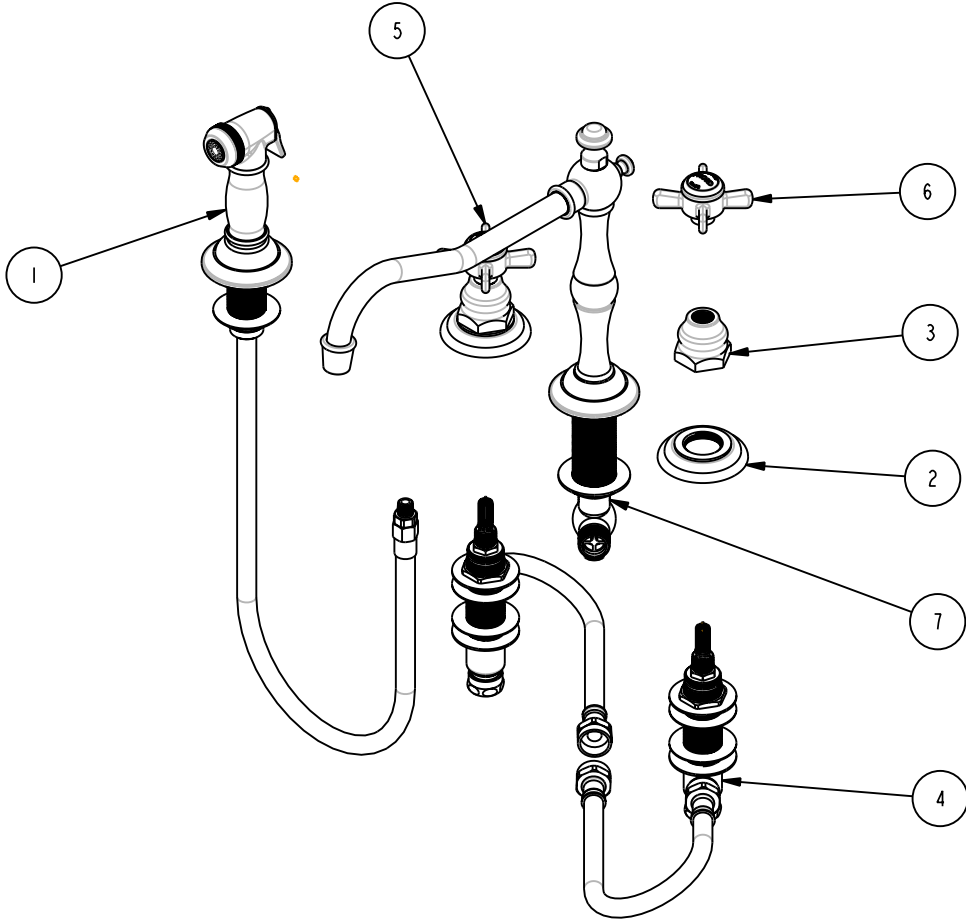
B

A

A

BILL OF MATERIAL (CURRENT LEVEL)

ITEM	PT/ASSY	DESCRIPTION	TYPE	QTY.
1	129	HAND SPRAY	ASSEMBLY	1
2	10048	ESCUTCHEON W/S VALVE	PART	2
3	10523	HEX ESCUTCHEON BONNET	PART	2
4	1-541.FIG2	VALVE KIT - 943	ASSEMBLY	1
5	2-114	THIN BLADE X - HANDLE HOT	ASSEMBLY	1
6	2-115	THIN BLADE X - HANDLE COLD	ASSEMBLY	1
7	2-174	SPOUT ASM - 943	ASSEMBLY	1



COPYRIGHT 2003 BRASSTECH, INC. THESE DRAWINGS AND THE DESIGNS DEPICTED HEREIN ARE THE PROPRIETARY PROPERTY OF BRASSTECH. ANY USE OR REPRODUCTION IS SUBJECT TO THE EXPRESS APPROVAL OF BRASSTECH. UNAUTHORIZED USE IS STRICTLY PROHIBITED. ALL RIGHTS RESERVED.

BRASSTECH
 INCORPORATED
 2001 E. CARNEGIE AVE.
 SANTA ANA, CA 92705
 (949) 417-5207

KITCHEN FAUCET WITH SPRAY

ASSY. NO. 946		C	EO-0449	11/11/04
SCALE 0.200		B	EO-0443	11/02/04
REF. -	SHEET 1 OF 2	REV	REV DESC	DATE

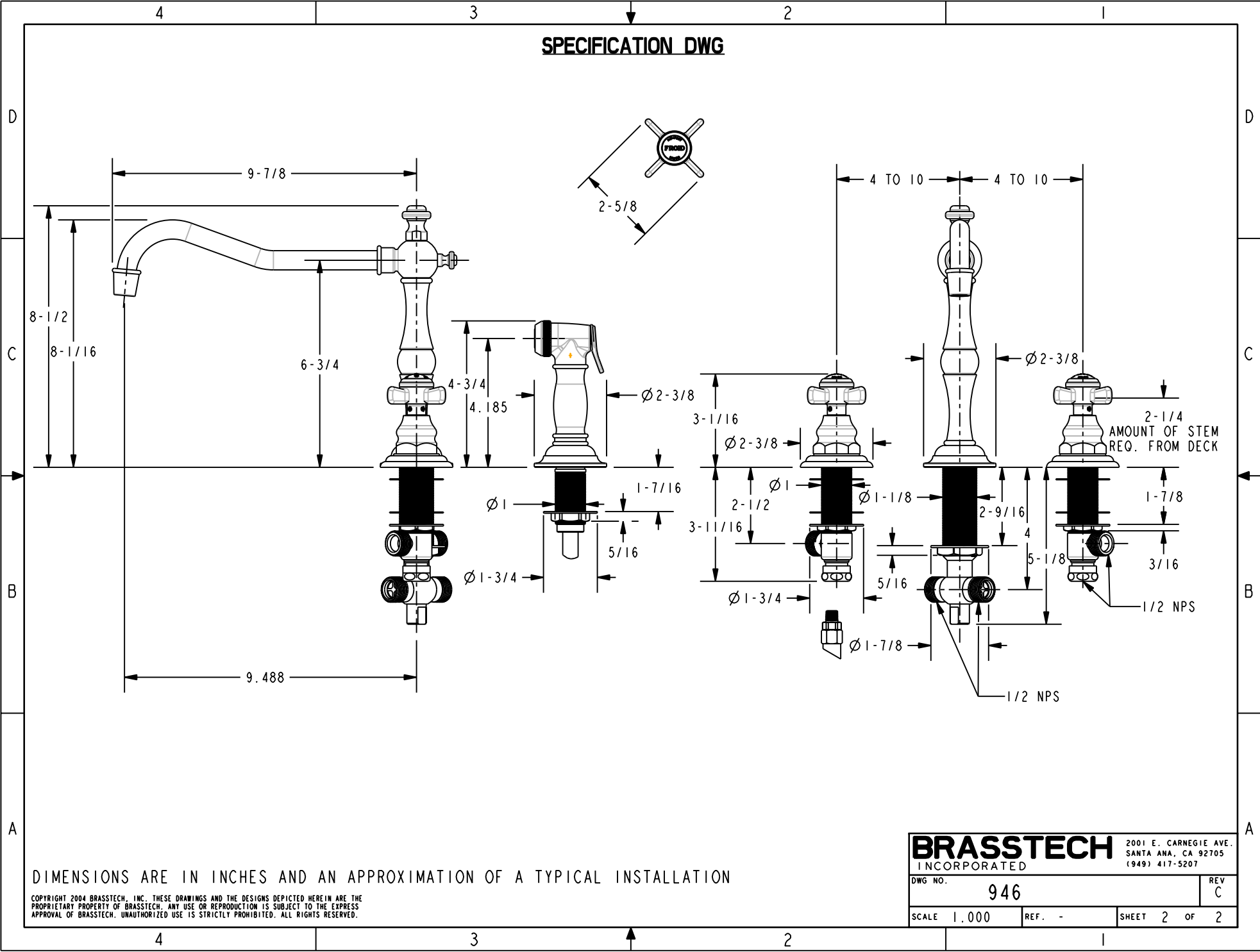
4

3

2

1

SPECIFICATION DWG



DIMENSIONS ARE IN INCHES AND AN APPROXIMATION OF A TYPICAL INSTALLATION

COPYRIGHT 2004 BRASSTECH, INC. THESE DRAWINGS AND THE DESIGNS DEPICTED HEREIN ARE THE PROPRIETARY PROPERTY OF BRASSTECH. ANY USE OR REPRODUCTION IS SUBJECT TO THE EXPRESS APPROVAL OF BRASSTECH. UNAUTHORIZED USE IS STRICTLY PROHIBITED. ALL RIGHTS RESERVED.

BRASSTECH 2001 E. CARNEGIE AVE.
INCORPORATED SANTA ANA, CA 92705
(949) 417-5207

DWG NO. 946	REV C
SCALE 1.000	REF. - SHEET 2 OF 2