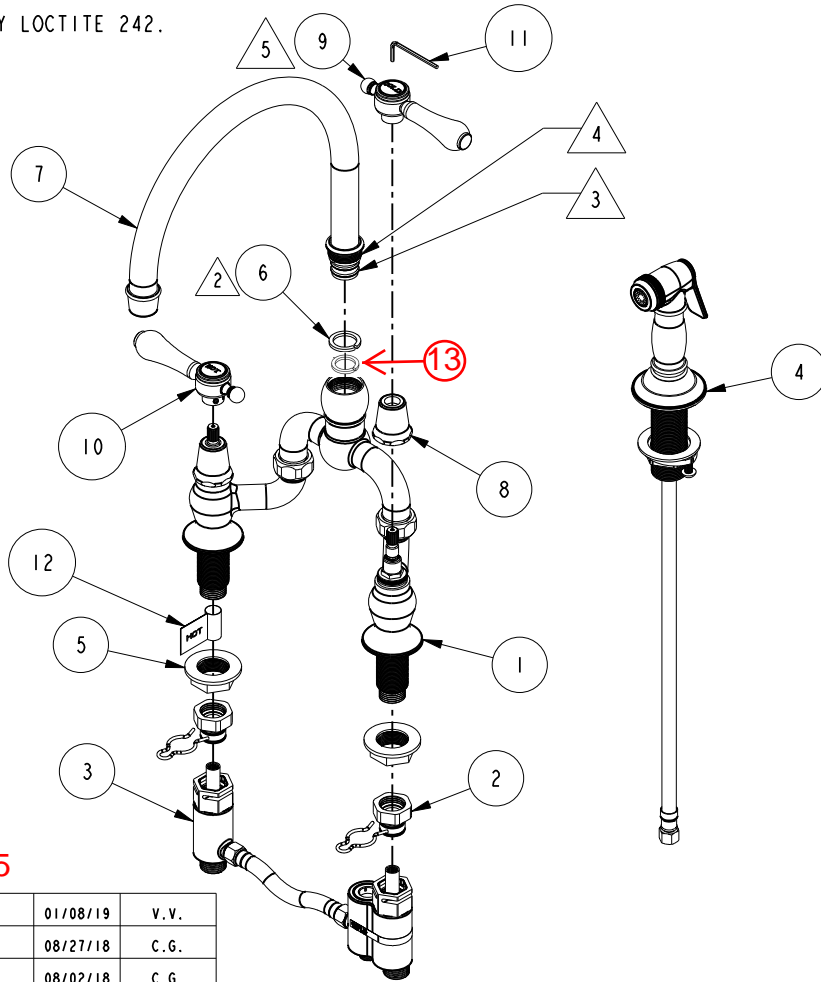


NOTES:

- 1. FIT / FORM / FUNCTION SHALL FOLLOW PS-E.008.
- 2. TRIM 3/8" OF SPLIT RING AND PLACE BETWEEN SPOUT AND BODY.
- 3. APPLY THIN COAT OF SILICON GREASE ON O-RINGS.
- 4. APPLY LOCTITE 242.

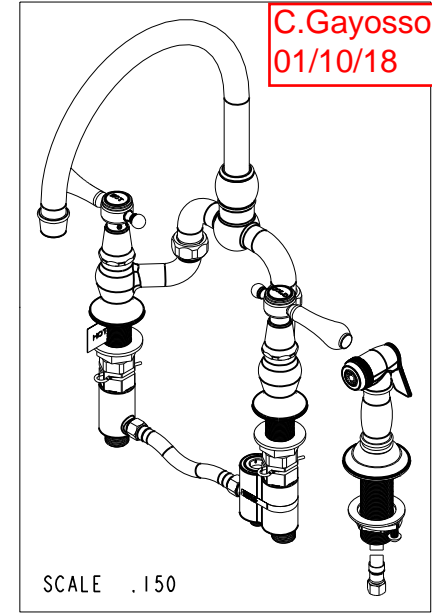


J EN-3785

BILL OF MATERIAL (CURRENT LEVEL)

ITEM	PT/ASSY	DESCRIPTION	TYPE	QTY.
1	3-523	KITCHEN BRIDGE BODY ASM, SIDE SPRAY	ASSEMBLY	1
2	1-152	SEAT ASSY, UPPER	ASSEMBLY	2
3	2-472	DIVERTER ASSY, BRIDGE FAUCET	ASSEMBLY	1
4	129	KITCHEN SPRAY HEAD	ASSEMBLY	1
5	91473	FLANGE NUT 1.006"-20	PART	2
6	91111	SPLIT RING 3/4 X 1 NYLON	PART	1
7	3-525	SPOUT ASSEMBLY	ASSEMBLY	1
8	12259	HANDLE BONNET - TUB FILLER	PART	2
9	2-133	HANDLE ASSEMBLY - COLD	ASSEMBLY	1
10	2-134	HANDLE ASSEMBLY - HOT	ASSEMBLY	1
11	10159	HEX KEY, 3/32 ALLOY STEEL	PART	1
12	98044	LABEL - HOT	PART	1
13	91013	WSHR DLR .705X.810X.030	PART	1

C.Gayosso
01/10/18



-	H	EN-3777	01/08/19	V.V.
-	G	EN-3688	08/27/18	C.G.
-	F	EN-3675	08/02/18	C.G.
-	E	EN-3612	05/23/18	JM
-	D	EN-2909	06/19/17	AN
-	C	EN-3039b	05/03/16	AN
-	B	EN-2920	09/11/15	H.LE
-	A	EN-2907	06/19/15	-
-	-	EN-2744	12/11/14	-
ZONE	REV	DESCRIPTION	DATE	APPROVED

COPYRIGHT 2005 BRASSTECH, INC. THESE DRAWINGS AND THE DESIGNS DEPICTED HEREIN ARE THE PROPRIETARY PROPERTY OF BRASSTECH. ANY USE OR REPRODUCTION IS SUBJECT TO THE EXPRESS APPROVAL OF BRASSTECH. UNAUTHORIZED USE IS STRICTLY PROHIBITED. ALL RIGHTS RESERVED.

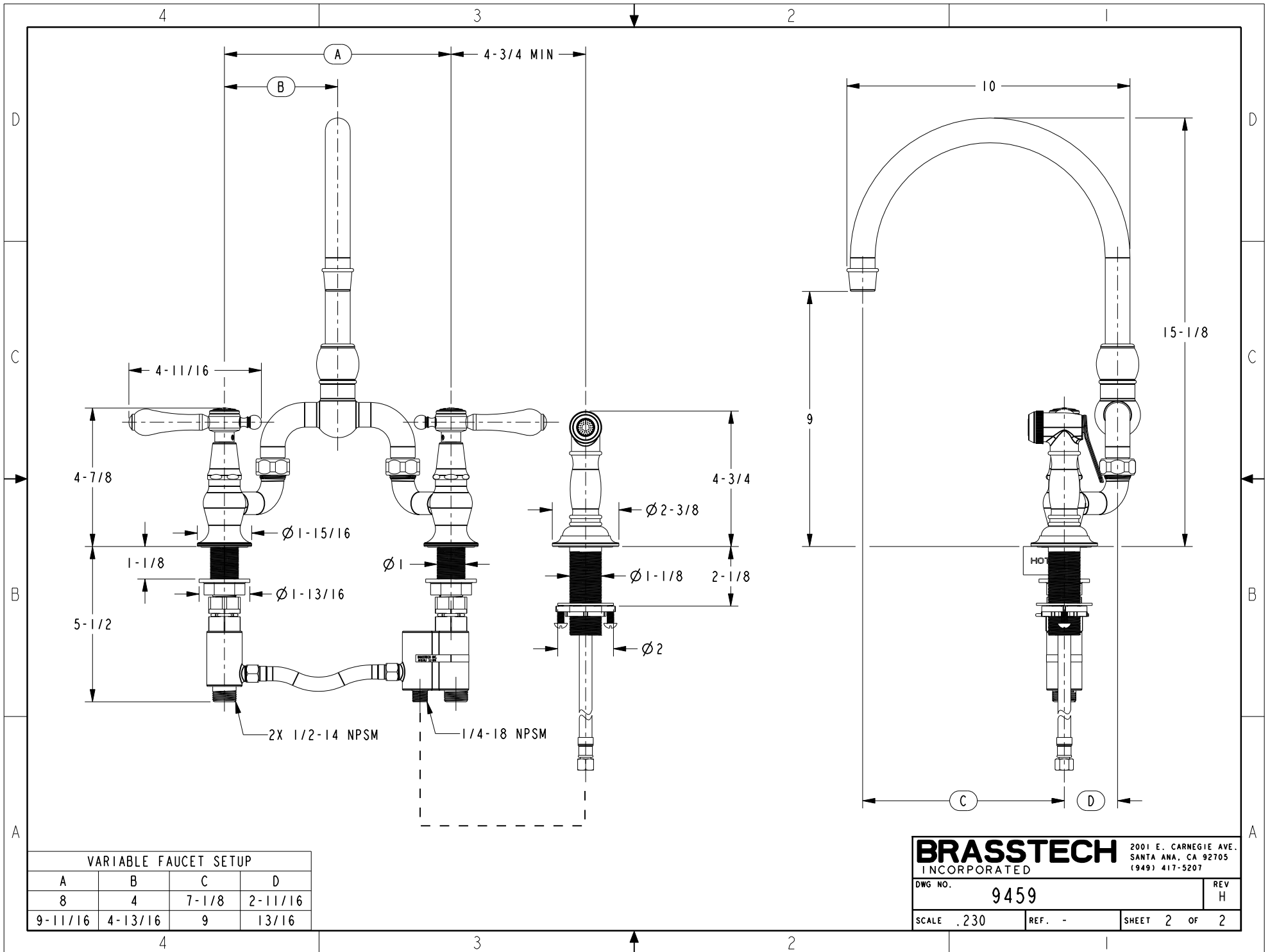
TESTING	-	-	-
ASSEMBLY	-	-	-
PLATING	-	-	-
POLISHING	-	NEXT ASSY	USED ON
MACHINING	-	APPLICATION	
TOOLING FIXTURE #	REMOVE ALL BURRS AND SHARP EDGES	APPLICATION	

UNITS ARE: INCHES [MM]
TOLERANCES ARE:
FRACTIONS DECIMALS ANGLES
±1/16" .X ±.1 [2.5] ±1°
.XX ±.06 [1.5]
(X.XXX) DENOTES CRITICAL DIMS.
ALL THREADS ARE CRITICAL
DRAWN AMARISH 09/11/15
CHECKED JINSON 09/11/15
APPROVED RAVINDRA 09/11/15

BRASSTECH
INCORPORATED
2001 CARNEGIE AVE.
SANTA ANA, CA 92705
(949) 417-5207

KITCHEN BRIDGE FAUCET W/
SIDE SPRAY

DWG NO. 9459
SCALE .165
REF. -
SHEET 1 OF 2



VARIABLE FAUCET SETUP			
A	B	C	D
8	4	7-1/8	2-11/16
9-11/16	4-13/16	9	13/16

BRASSTECH 2001 E. CARNEGIE AVE.
 INCORPORATED SANTA ANA, CA 92705
 (949) 417-5207

DWG NO. 9459 REV H

SCALE .230 REF. - SHEET 2 OF 2