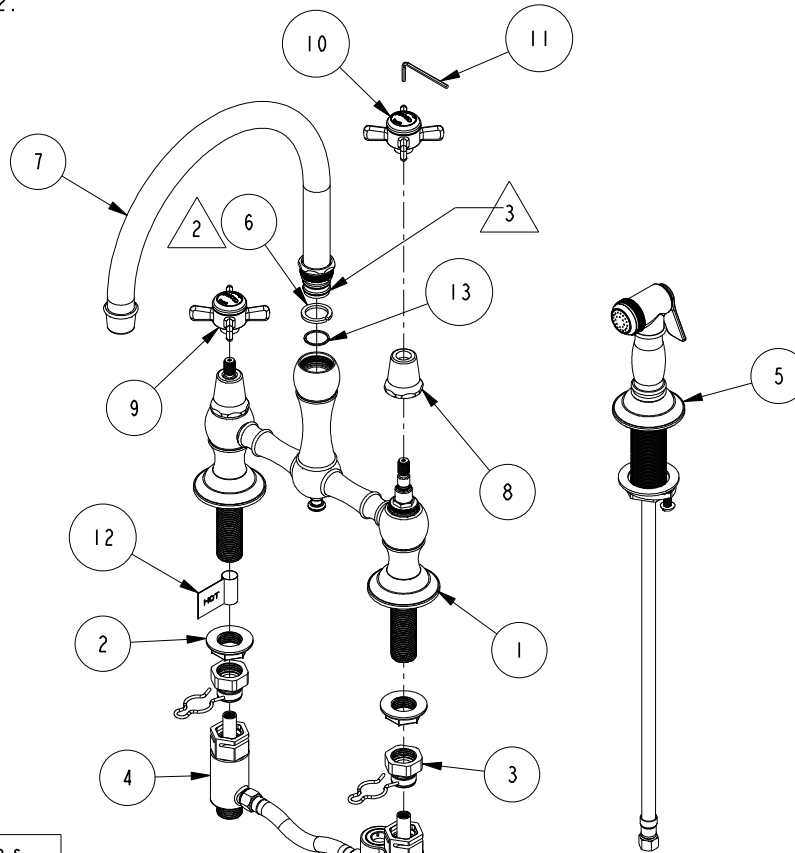


NOTES:

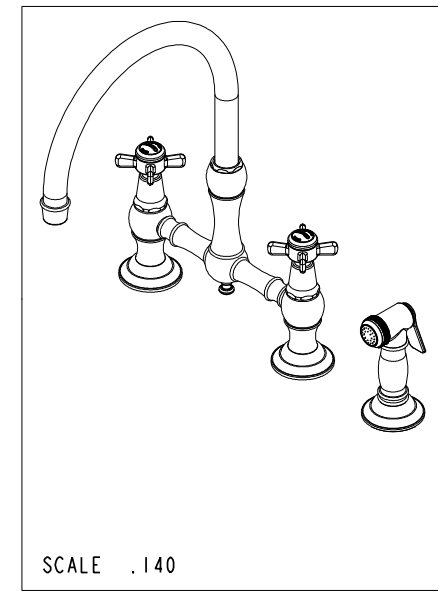
1. TO INSPECT ASSEMBLY, FOLLOW FIRST ARTICLE AND IN PROCESS INSPECTION SHEET.

- 2 TRIM 3/8" OF SPLIT RING AND PLACE BETWEEN SPOUT AND BODY.
- 3 APPLY THIN COAT OF SILICON GREASE ON O-RINGS.
- 4 APPLY LOCTITE 242.



BILL OF MATERIAL (CURRENT LEVEL)

ITEM	PT/ASSY	DESCRIPTION	TYPE	QTY.
1	3-522	KITCHEN BRIDGE BODY ASM, SIDE SPRAY	ASSEMBLY	1
2	91061	FLANGE NUT 1/2-14 NPSM	PART	2
3	1-152	SEAT ASSY, UPPER	ASSEMBLY	2
4	2-472	DIVERTER ASSY, BRIDGE FAUCET	ASSEMBLY	1
5	129	KITCHEN SPRAY HEAD	ASSEMBLY	1
6	91111	SPLIT RING 3/4 X 1 NYLON	PART	1
7	3-525	SPOUT ASSEMBLY	ASSEMBLY	1
8	12259	HANDLE BONNET - TUB FILLER	PART	2
9	2-114	THIN BLADE X - HANDLE HOT	ASSEMBLY	1
10	2-115	THIN BLADE X - HANDLE COLD	ASSEMBLY	1
11	10159	HEX KEY, 3/32 ALLOY STEEL	PART	1
12	98044	LABEL - HOT	PART	1
13	91013	WSHR, .715 ID X .810 OD X .033 THK, DELRANT	PART	1



-	J	EN-4300f	02/24/21	R.S.
-	H	EN-3879	10/14/19	C.G.
-	G	EN-3785	01/10/19	C.G.
-	F	EN-3777	01/08/19	V.V.
-	E	EN-3688	08/27/18	C.G.
-	D	EN-3675	08/02/18	C.G.
-	C	EN-3612	05/23/18	JM
-	B	EN-2909	06/19/17	AN
-	A	EN-3039c	05/24/16	AN
-	-	EN-2744	12/11/14	AN
ZONE	REV	DESCRIPTION	DATE	APPROVED

COPYRIGHT 2005 BRASSTECH, INC. THESE DRAWINGS AND THE DESIGNS DEPICTED HEREIN ARE THE PROPRIETARY PROPERTY OF BRASSTECH. ANY USE OR REPRODUCTION IS SUBJECT TO THE EXPRESS APPROVAL OF BRASSTECH. UNAUTHORIZED USE IS STRICTLY PROHIBITED. ALL RIGHTS RESERVED.

TESTING	-	-	-
ASSEMBLY	-	-	-
PLATING	-	-	-
POLISHING	-	NEXT ASSY	USED ON
MACHINING	-	APPLICATION	
TOOLING FIXTURE #	REMOVE ALL BURRS AND SHARP EDGES		

UNITS ARE: INCHES [MM]
TOLERANCES ARE:
FRACTIONS DECIMALS ANGLES
±1/16" .X ±.1 [2.5] ±°
.XX ±.06 [1.5]

(X.XXX) DENOTES CRITICAL DIMS.
ALL THREADS ARE CRITICAL

DRAWN	AN	05/24/16
CHECKED	AN	05/24/16
APPROVED	AN	05/24/16

BRASSTECH
INCORPORATED

2001 CARNEGIE AVE.
SANTA ANA, CA 92705
(949) 417-5207

**KITCHEN BRIDGE FAUCET W/
SIDE SPRAY**

DWG NO.

9456

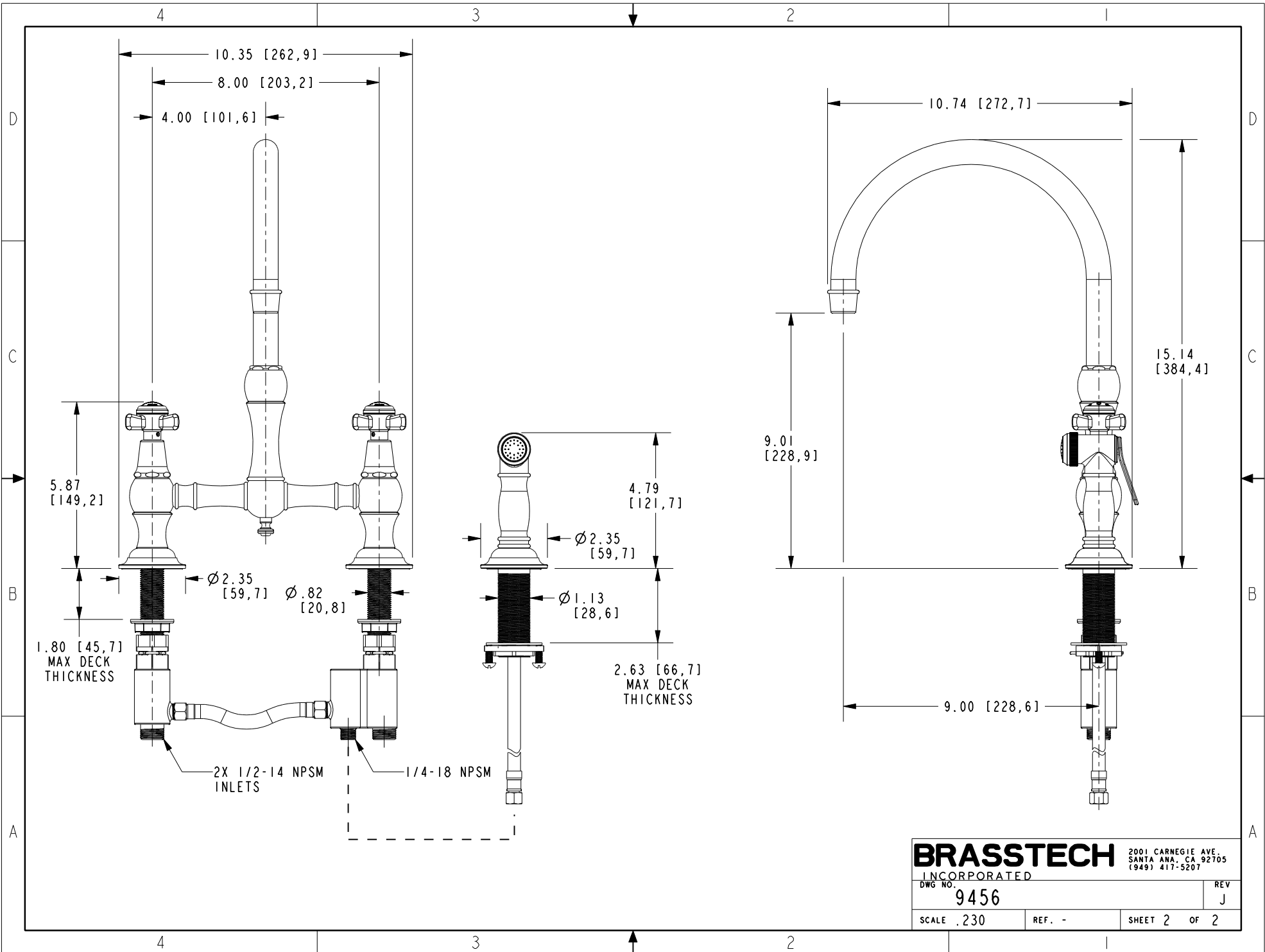
REV

J

SCALE .160

REF. -

SHEET | OF 2



BRASSTECH 2001 CARNEGIE AVE.
 INCORPORATED SANTA ANA, CA 92705
 (949) 417-5207

DWG NO.	REV
9456	J
SCALE .230	REF. -
SHEET 2 OF 2	