

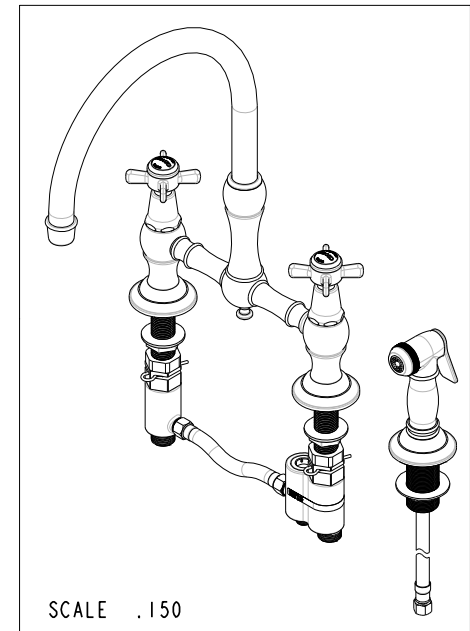
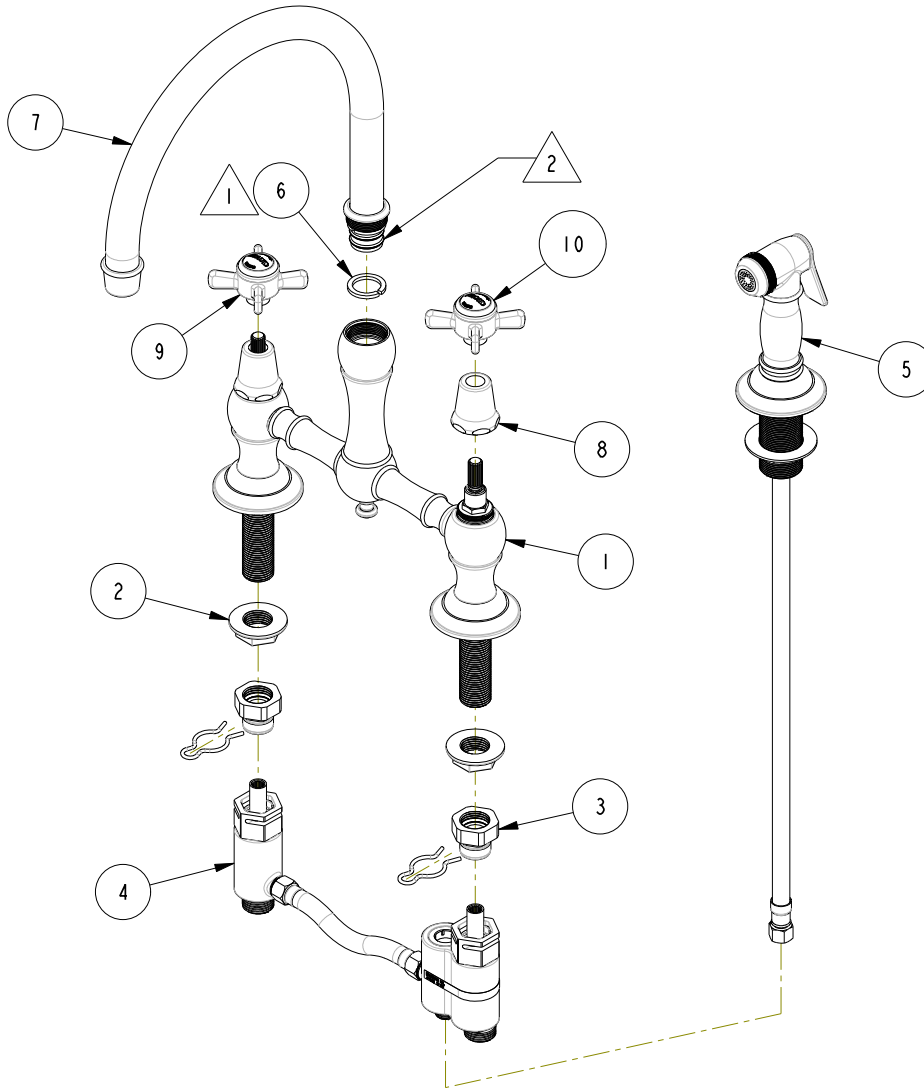
NOTES:

1 TRIM 3/8" OF SPLIT RING AND PLACE BETWEEN SPOUT AND BODY.

2 APPLY THIN COAT OF SILICON GREASE ON O-RINGS.

BILL OF MATERIAL (CURRENT LEVEL)

ITEM	PT/ASSY	DESCRIPTION	TYPE	QTY.
1	3-522	KITCHEN BRIDGE BODY ASM, SIDE SPRAY	ASSEMBLY	1
2	91061	FLANGE NUT 1/2-14 NPSM	PART	2
3	1-152	SEAT ASSY, UPPER	ASSEMBLY	2
4	2-472	DIVERTER ASSY, BRIDGE FAUCET	ASSEMBLY	1
5	129	KITCHEN SPRAY HEAD	ASSEMBLY	1
6	91111	SPLIT RING 3/4 X 1 NYLON	PART	1
7	3-525	SPOUT ASSEMBLY	ASSEMBLY	1
8	12259	HANDLE BONNET - TUB FILLER	PART	2
9	2-114	THIN BLADE X - HANDLE HOT	ASSEMBLY	1
10	2-115	THIN BLADE X - HANDLE COLD	ASSEMBLY	1



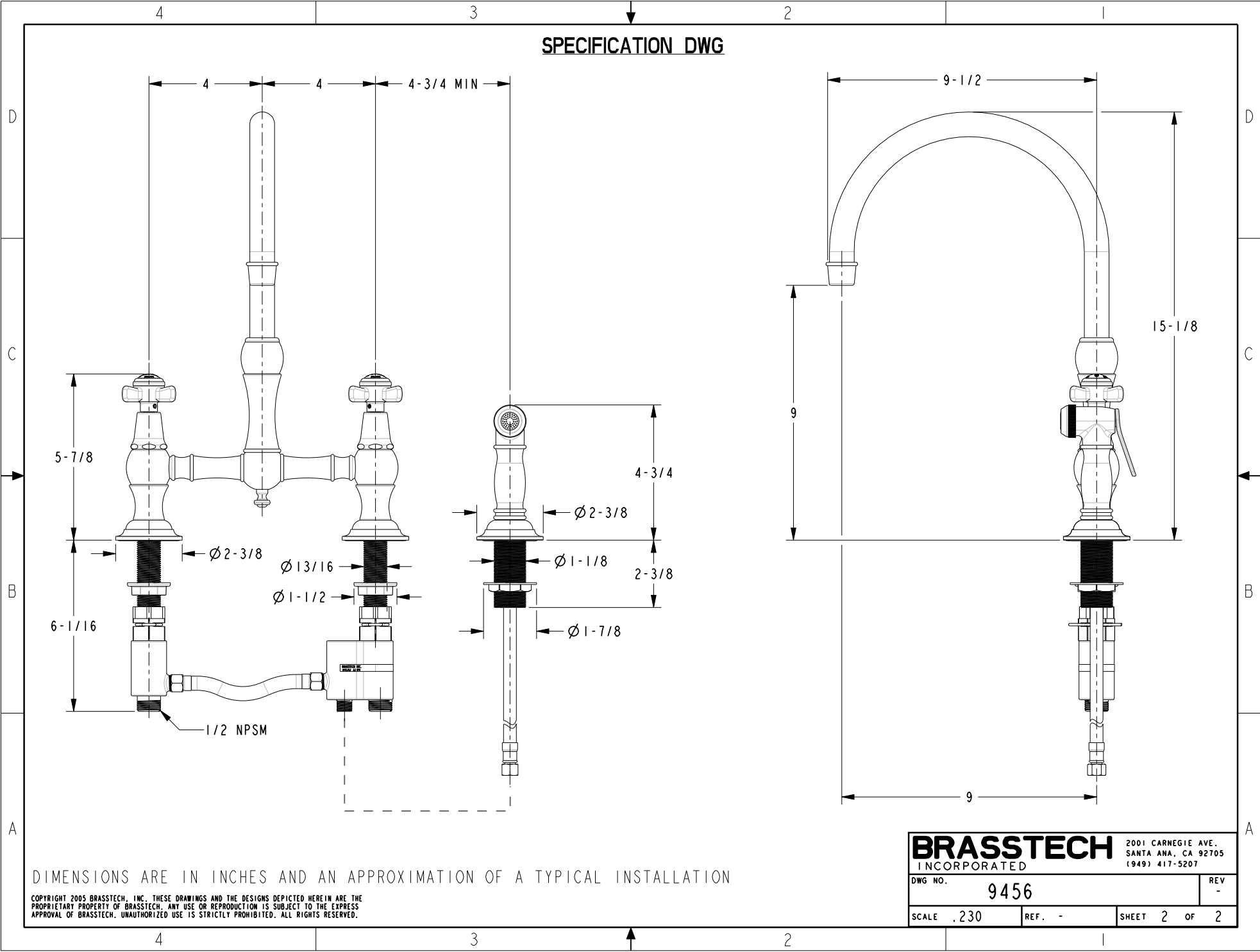
COPYRIGHT 2005 BRASSTECH, INC. THESE DRAWINGS AND THE DESIGNS DEPICTED HEREIN ARE THE PROPRIETARY PROPERTY OF BRASSTECH. ANY USE OR REPRODUCTION IS SUBJECT TO THE EXPRESS APPROVAL OF BRASSTECH. UNAUTHORIZED USE IS STRICTLY PROHIBITED. ALL RIGHTS RESERVED.

BRASSTECH
INCORPORATED
2001 CARNEGIE AVE.
SANTA ANA, CA 92705
(949) 417-5207

KITCHEN BRIDGE FAUCET W/ SIDE
SPRAY

ASSY. NO.	9456	-	-	-
SCALE .200	REF. -	SHEET 1 OF 2	REV	REV DESC
			EN-2744	12/11/14
			DATE	

SPECIFICATION DWG



DIMENSIONS ARE IN INCHES AND AN APPROXIMATION OF A TYPICAL INSTALLATION

COPYRIGHT 2005 BRASSTECH, INC. THESE DRAWINGS AND THE DESIGNS DEPICTED HEREIN ARE THE PROPRIETARY PROPERTY OF BRASSTECH. ANY USE OR REPRODUCTION IS SUBJECT TO THE EXPRESS APPROVAL OF BRASSTECH. UNAUTHORIZED USE IS STRICTLY PROHIBITED. ALL RIGHTS RESERVED.

BRASSTECH		2001 CARNEGIE AVE.
INCORPORATED		SANTA ANA, CA 92705
		(949) 417-5207
DWG NO.	9456	REV -
SCALE .230	REF. -	SHEET 2 OF 2