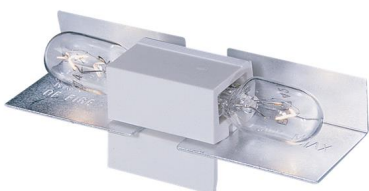




9428-15: Lx Wedge Base Lampholder-15



Dimensions:

Length: 2 1/2"
Width: 3/4"
Height: 3/4"

Bulbs:

1 - Wedge T3 1/4 5w Max. 12v - Not included
 1 - Xenon Wedge T3 1/4 3w Max. 12v - Not included
 1 - Xenon Wedge T3 1/4 5w Max. 12v - Not included

Material List:

1 Body - Polycarbonate - Undefined
 1 Reflector - Aluminum - Undefined

Safety Listing:

Safety Listed for Damp Locations
 Safety Listed for Damp Locations

Instruction Sheets:

Trilingual Lyte (English, Spanish, French) (HC-128)

Collection: Lx Wedge Base Lamps

For use with our Xenon and incandescent wedge base lamps, the Lx Wedge Base Lampholders feature a high quality reflector for minimizing light loss from your selected lamps. Each lampholder snaps onto Lx Track and Cable with ease and minimum spacing of 4 inches on center. Recommended for use in hard to reach applications or in tight spaces. Replacement lamps: 9728, 9731, 9732.

UPC #:785652942853

Finish: White (15)

Replacement Bulb Data:

Info: 9728 Info: 9731 Info: 9732

| Product # | | | Type | Base | Watts | Watts Consumed | Volts | Hours | Lumens | Temp (°K) | CRI |
|-----------|------------------|-------|--------|-------|-------|----------------|-------|-------|--------|-----------|-----|
| 9728 | Clear Glass Lens | | T3 1/4 | Wedge | 5 | 4 | 12v | 9000 | 23 | 2300 | 90 |
| 9731 | Clear Glass Lens | Xenon | T3 1/4 | Wedge | 3 | 2.7 | 12v | 19000 | 15 | 2400 | 90 |
| 9732 | Clear Glass Lens | Xenon | T3 1/4 | Wedge | 5 | 4.2 | 12v | 8000 | 55 | 2550 | 90 |

Shipping Information:

| Package Type | Product # | Quantity | UPC | Length | Width | Height | Cube | Weight | Fr. Class | UPS Ship |
|-----------------|-----------|----------|----------------|--------|-------|--------|--------|--------|-----------|----------|
| Individual | 9428-15 | 1 | 785652942853 | 3 | 2.5 | 1 | 0.004 | 0.01 | 100 | Yes |
| Master Pack | 9428-15 | 50 | 10785652942850 | 11 | 11 | 3 | 0.21 | 1.2 | 100 | Yes |
| Shipping Master | 9428-15 | 1000 | 20785652942857 | 30.5 | 13 | 13.5 | 3.098 | 25.45 | 100 | Yes |
| NJ Pallet | | 20000 | | 48 | 40 | 72 | 80 | 616 | | No |
| NV Pallet | | 24000 | | 41.5 | 40 | 68 | 65.324 | 611 | | No |