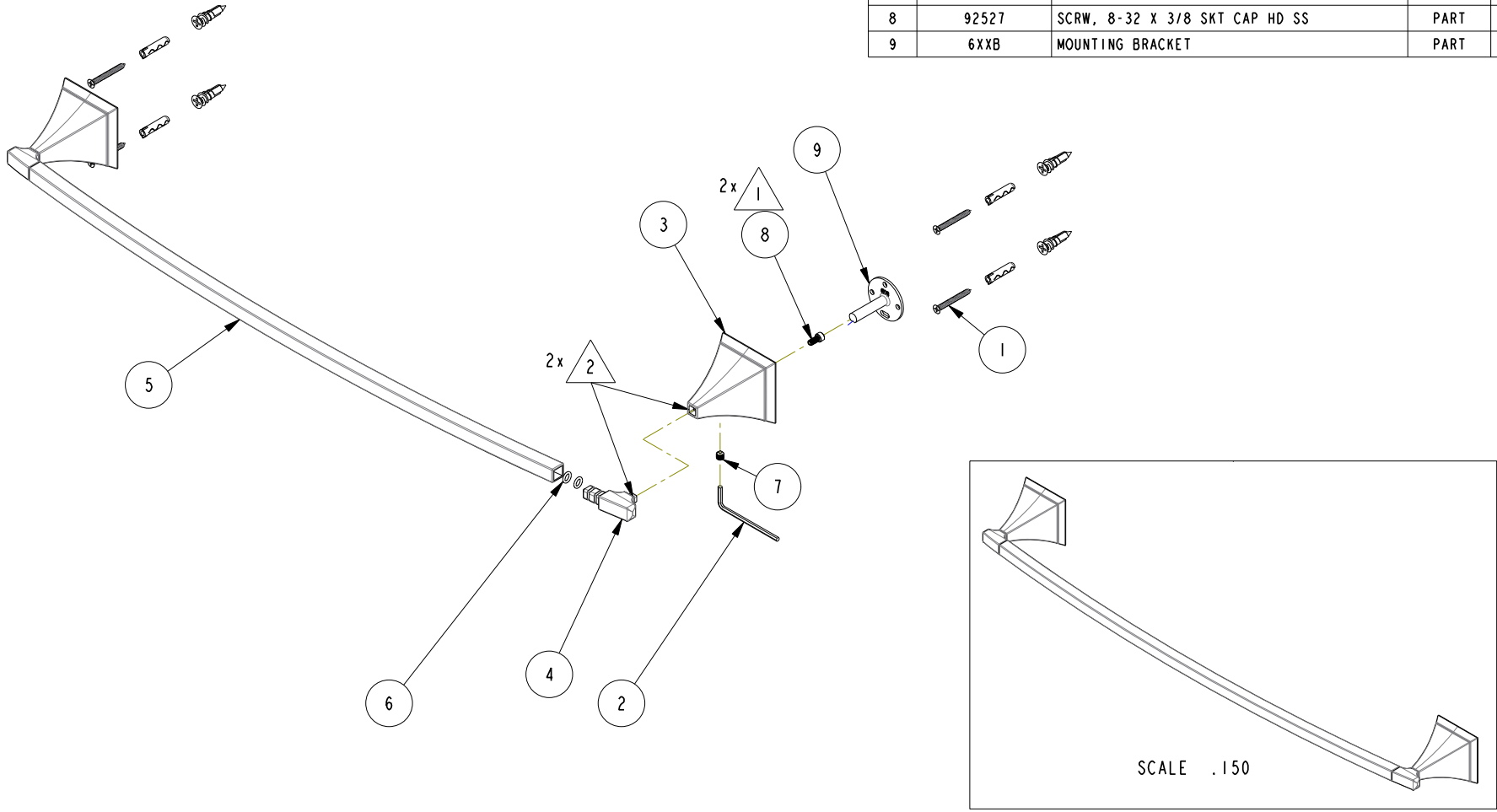


- 1 APPLY LOCTITE 680.
- 2 APPLY LOCTITE E-00NS HYSOL EPOXY

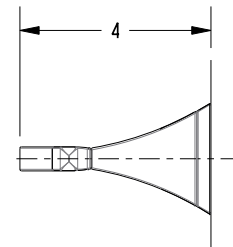
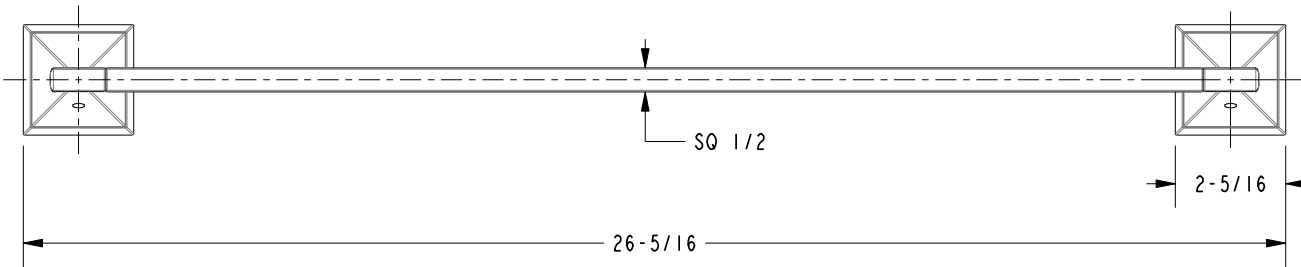
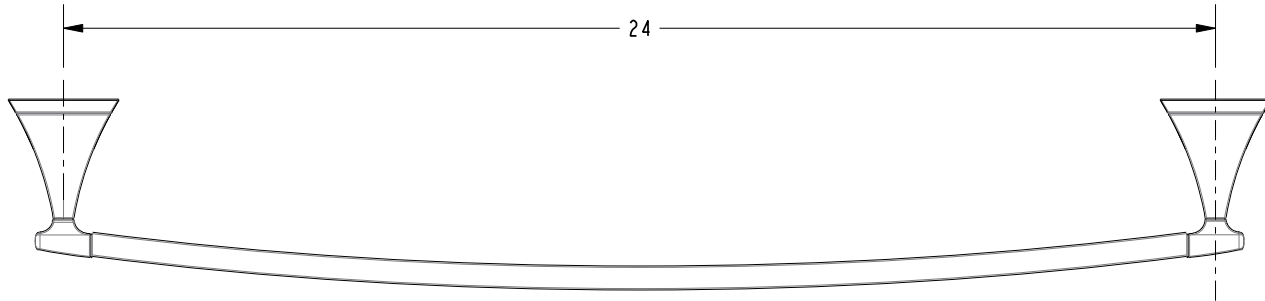
BILL OF MATERIAL (CURRENT LEVEL)				
ITEM	PT/ASSY	DESCRIPTION	TYPE	QTY.
1	I-206	HARDWARE PACK	ASSEMBLY	2
2	10615	3MM ALLOY STEEL HEX KEY	PART	1
3	40506	POST, TOWEL BAR	PART	2
4	40507	TOWEL BAR - FINIAL	PART	2
5	40509	TUBE - 24"	PART	1
6	91049	O-RING, #2- 010, EPDM, 65-75 DURO, NSF 61	PART	4
7	92031	SCRW, M6 X 1 X 6 SKT HD CUP PT SS	PART	2
8	92527	SCRW, 8-32 X 3/8 SKT CAP HD SS	PART	2
9	6XXB	MOUNTING BRACKET	PART	2



COPYRIGHT 2005 BRASSTECH, INC. THESE DRAWINGS AND THE DESIGNS DEPICTED HEREIN ARE THE PROPRIETARY PROPERTY OF BRASSTECH. ANY USE OR REPRODUCTION IS SUBJECT TO THE EXPRESS APPROVAL OF BRASSTECH. UNAUTHORIZED USE IS STRICTLY PROHIBITED. ALL RIGHTS RESERVED.

BRASSTECH INCORPORATED	2001 CARNEGIE AVE. SANTA ANA, CA 92705 (949) 417-5207	24" TOWEL BAR	ASSY. NO. 41-02		EN-2087	09/20/13
			SCALE .200	REF. -	SHEET 1 OF 2	REV

SPECIFICATION DWG



DIMENSIONS ARE IN INCHES AND AN APPROXIMATION OF A TYPICAL INSTALLATION

COPYRIGHT 2005 BRASSTECH, INC. THESE DRAWINGS AND THE DESIGNS DEPICTED HEREIN ARE THE PROPRIETARY PROPERTY OF BRASSTECH. ANY USE OR REPRODUCTION IS SUBJECT TO THE EXPRESS APPROVAL OF BRASSTECH. UNAUTHORIZED USE IS STRICTLY PROHIBITED. ALL RIGHTS RESERVED.

BRASSTECH		2001 CARNEGIE AVE.
INCORPORATED		SANTA ANA, CA 92705
		(949) 417-5207
DWG NO.	41-02	REV -
SCALE .250	REF. -	SHEET 2 OF 2