
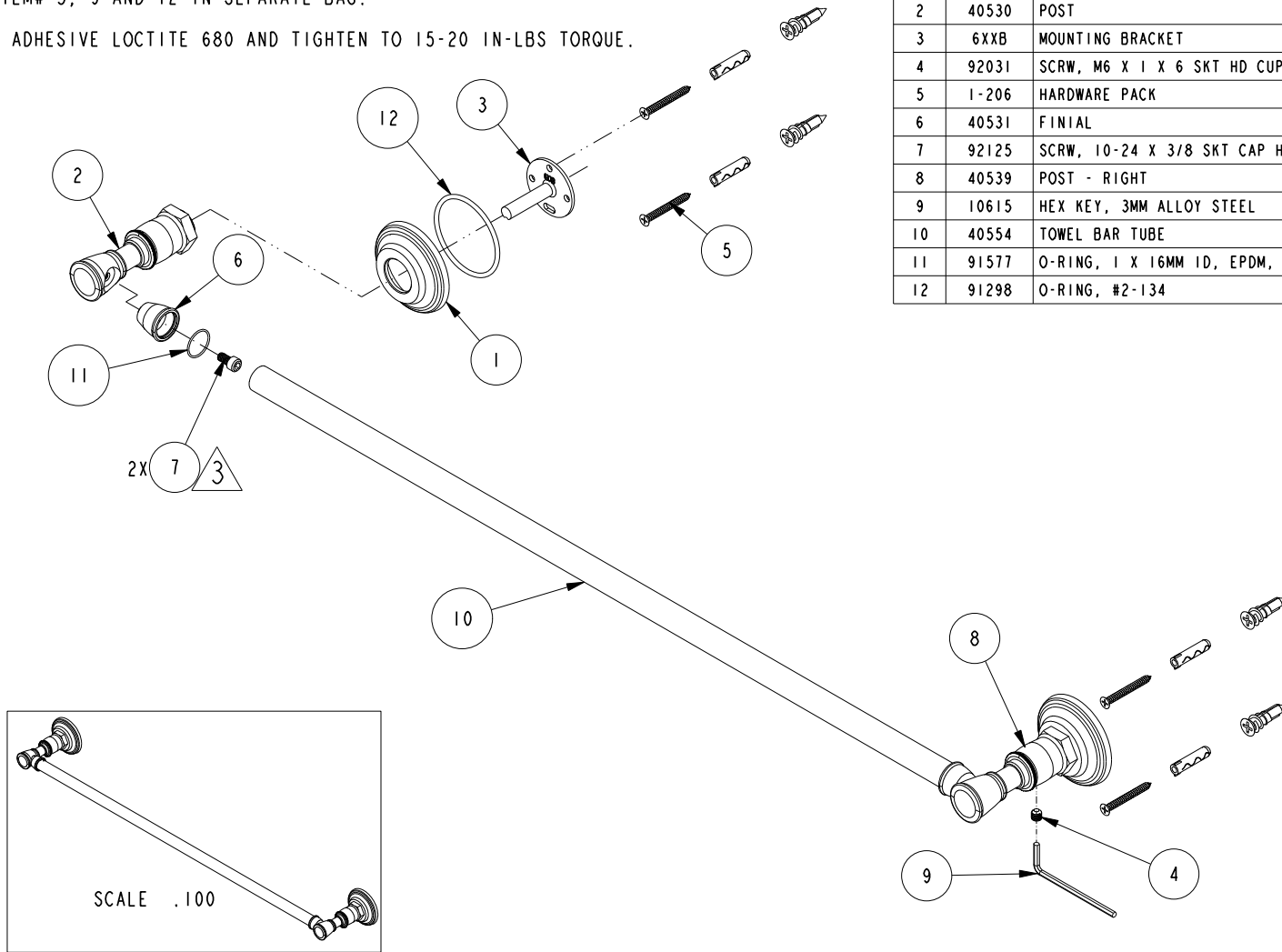


NOTES:

- (N1) 1. FIT / FORM / FUNCTION SHALL FOLLOW PS-E.008.
- (N2) 2. PLACE ITEM# 5, 9 AND 12 IN SEPARATE BAG.
- (N3)  3 APPLY ADHESIVE LOCTITE 680 AND TIGHTEN TO 15-20 IN-LBS TORQUE.



BILL OF MATERIAL (CURRENT LEVEL)

ITEM	PT/ASSY	DESCRIPTION	TYPE	QTY.
1	40553	ESCUTCHEON	PART	2
2	40530	POST	PART	1
3	6XXB	MOUNTING BRACKET	PART	2
4	92031	SCRW, M6 X 1 X 6 SKT HD CUP PT SS	PART	2
5	1-206	HARDWARE PACK	ASSEMBLY	2
6	40531	FINIAL	PART	2
7	92125	SCRW, 10-24 X 3/8 SKT CAP HD SS	PART	2
8	40539	POST - RIGHT	PART	1
9	10615	HEX KEY, 3MM ALLOY STEEL	PART	1
10	40554	TOWEL BAR TUBE	PART	1
11	91577	O-RING, 1 X 16MM ID, EPDM, 65-75 DURO	PART	2
12	91298	O-RING, #2-134	PART	2

SCALE .100

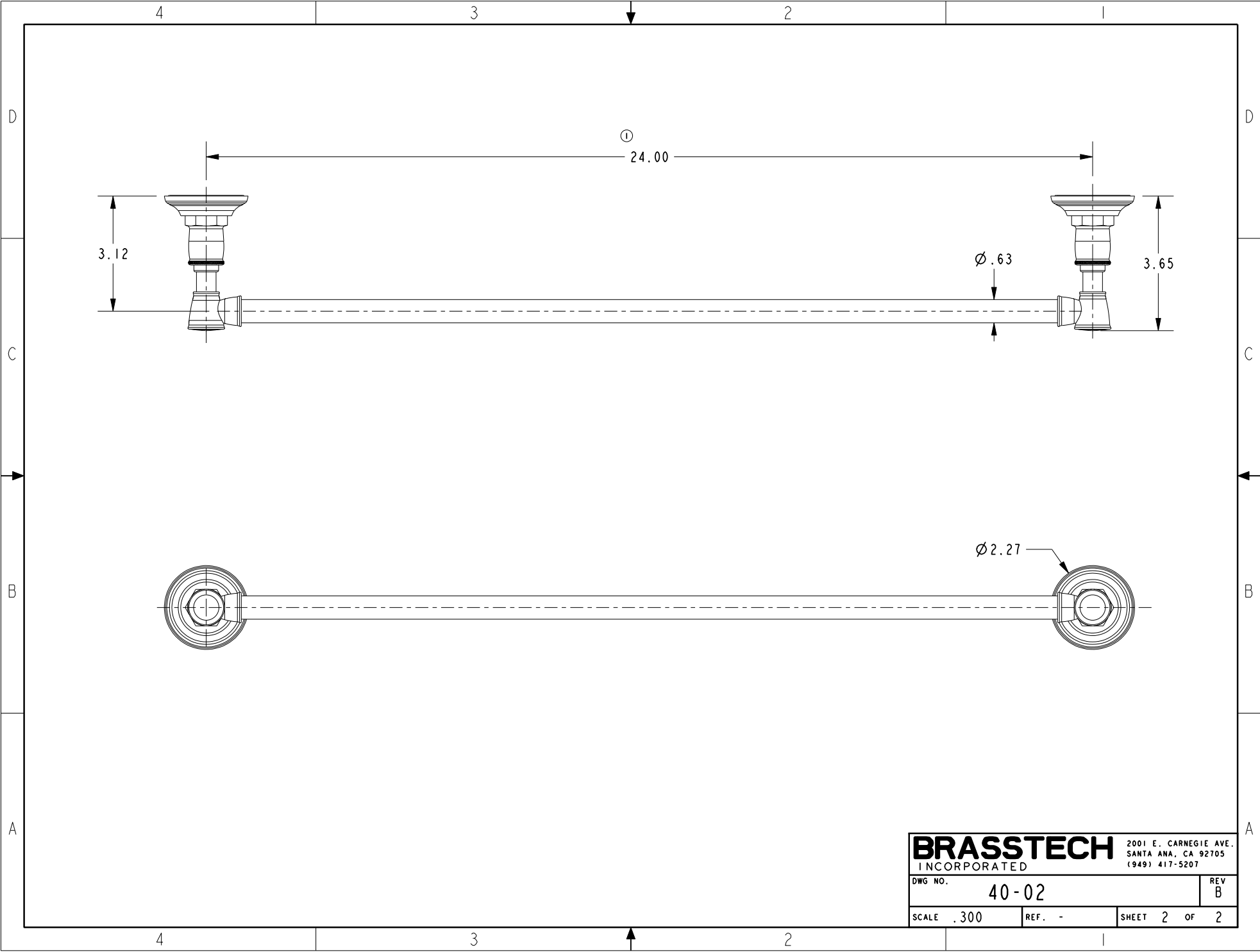
TESTING	-	-	-	UNITS ARE: INCHES [MM] TOLERANCES ARE: FRACTIONS DECIMALS ANGLES ±1/16" .X ±.1 [2,5] ±1° .XX ±.06 [1,3]
ASSEMBLY	-	-	-	(X.XXX) DENOTES CRITICAL DIMS. ALL THREADS ARE CRITICAL
PLATING	-	-	-	
POLISHING	-	NEXT ASSY	USED ON	
MACHINING	-	APPLICATION		CHECKED - -
TOOLING FIXTURE #	REMOVE ALL BURRS AND SHARP EDGES			APPROVED - -

BRASSTECH 2001 CARNEGIE AVE.
INCORPORATED SANTA ANA, CA 92705
(949) 417-5207

24" TOWEL BAR

DWG NO.	40-02	REV	B
SCALE	.250	REF.	-
SHEET	1	OF	2

-	B	EN-3089	06/30/16	J.M.	COPYRIGHT 2005 BRASSTECH, INC. THESE DRAWINGS AND THE DESIGNS DEPICTED HEREIN ARE THE PROPRIETARY PROPERTY OF BRASSTECH. ANY USE OR REPRODUCTION IS SUBJECT TO THE EXPRESS APPROVAL OF BRASSTECH. UNAUTHORIZED USE IS STRICTLY PROHIBITED. ALL RIGHTS RESERVED.
-	A	EN-2717	04/16/14	J.M.	
-	-	EN-2086	09/01/13	-	
ZONE	REV	DESCRIPTION	DATE	APPROVED	



BRASSTECH		2001 E. CARNEGIE AVE.	
INCORPORATED		SANTA ANA, CA 92705	
		(949) 417-5207	
DWG NO.	40-02	REV	B
SCALE	.300	REF.	-
		SHEET	2 OF 2