

AXOR Uno
Wall-Mounted Single-Handle Faucet Trim , 1.2 GPM
 Finishes : **chrome** Part no. : **38118001**



Description

Features

- Aerated spray
- Flow: 1.2 GPM (4.5 L/Min)
- Joystick ceramic cartridge

Item details

Technology



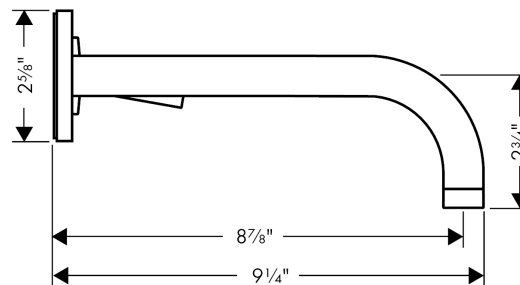
Compliance



Product image



Scale drawing

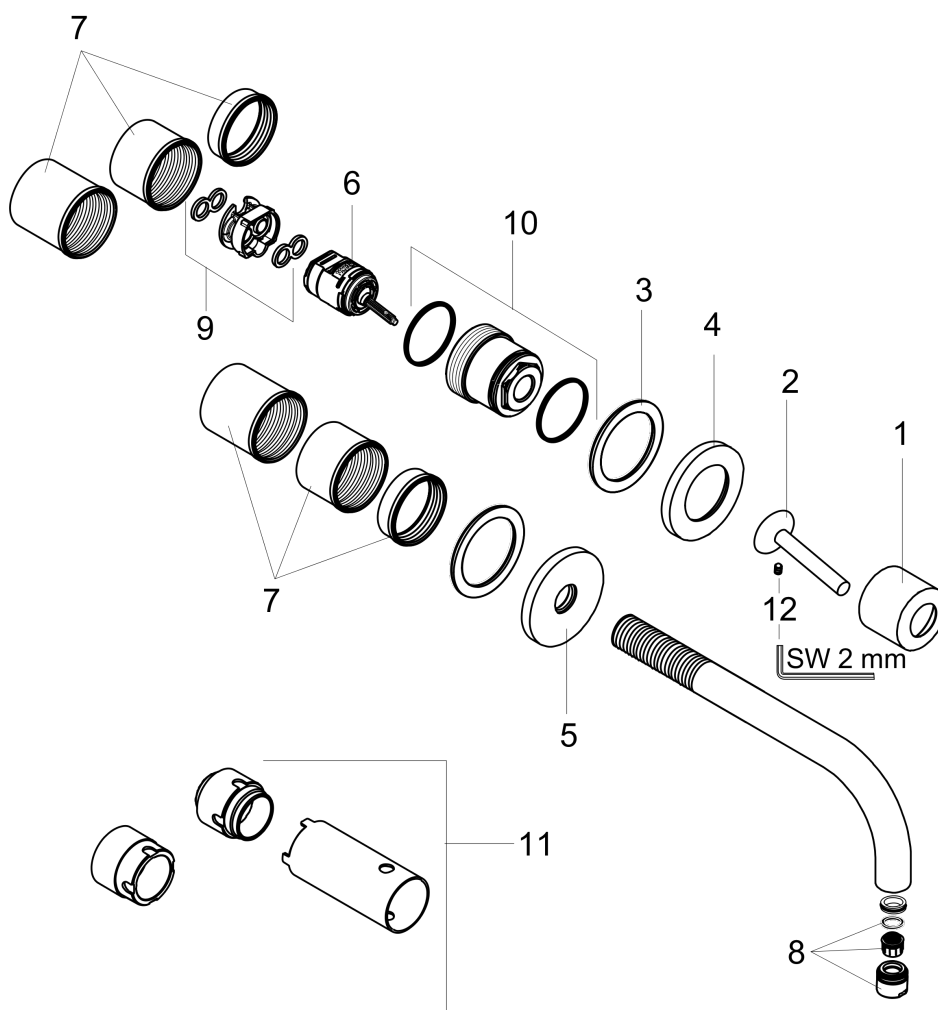


AXOR Uno
Wall-Mounted Single-Handle Faucet Trim , 1.2 GPM
Finishes : **chrome** Part no. : **38118001**



Exploded drawing

Year of production: >07/16



AXOR Uno

Wall-Mounted Single-Handle Faucet Trim , 1.2 GPM

Finishes : **chrome** Part no. : **38118001**



Spare parts list

Year of production: >07/16

Pos.	Description	Part no.	Price	PU
1	flange	96908000	-	1
2	handle	10092000	-	1
3	washer	97600000	-	1
4	escutcheon for handle	96909000	-	1
5	escutcheon for spout	96910000	-	1
6	cartridge, assy	96339000	-	1
7	fixing set	97971000	-	1
8	aerator M18x1 (4,5 l/min)	92884000	-	1
9	adapter for cartridge	95644000	-	1
10	nut	95645000	-	1
11	extension set 25 mm for 13622180	31971000	-	1
a	hollow set screw M4x6	97767000	-	1
b	conversion kit	95643000	-	1
c	base body	13622181	-	1
d	Grease	90920000	-	1