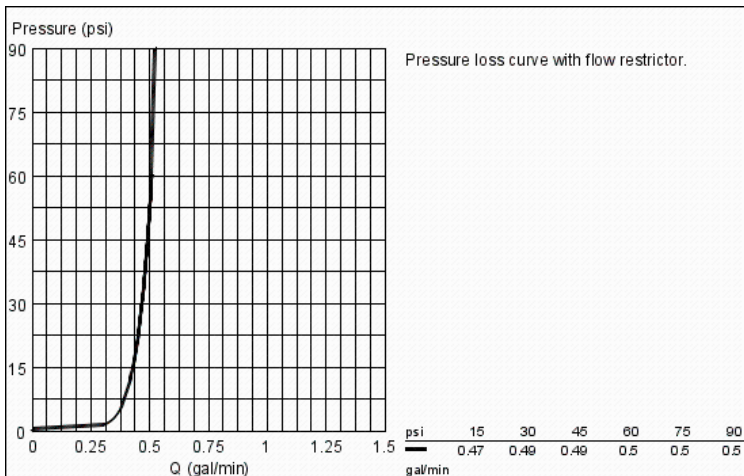
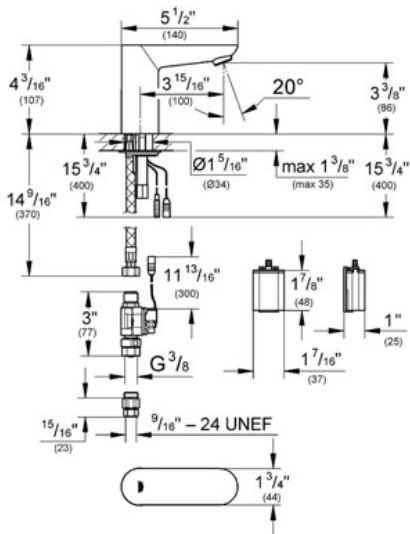


EUROECO COSMOPOLITAN E
1/2" Infra-red electronic bath
faucet without mixing device
MODEL # 36314

Pure Freude an Wasser



GROHE America, Inc | 200 North Gary Avenue, Suite G, Roselle, IL 60172
Phone: +1 (800) 444-7643 | Fax: +1 (800) 225-2778 | us-customerservice@grohe.com



Product Description:

1/2" Infra-red electronic bath faucet without mixing device

Standard Specification:

with infrared sensor for bi-directional communication for monitoring, configuration and service purpose

- 6V lithium-battery, type CR-P2
- External battery
- Multi-stage battery status display
- Aerator 1 gallon/min
- 0.2 gallon per washing cycle
- For cold or premixed water solenoid valve
- Dirt strainer
- Quick installation system
- 7 pre-set programs:
 - auto flush
 - thermal disinfection
 - cleaning mode
- additional functions and precise settings by remote control 36 407
- CE approved

Applicable Codes & Standards:

- Energy Policy Act of 1992
- NSF 61
- ASME A112.18.1/CSA B125.1
- US Federal and State material regulations
- EPA WaterSense®
- ICC/ANSI A117.1

Color:

- 36314 000 chrome