

4

3

2

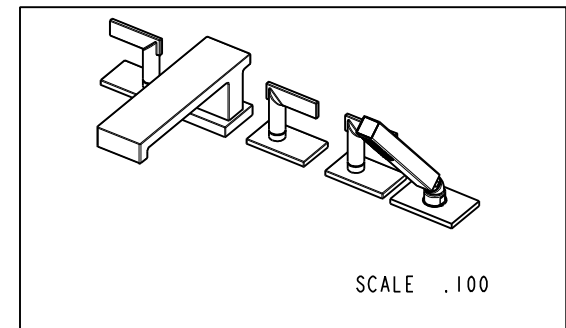
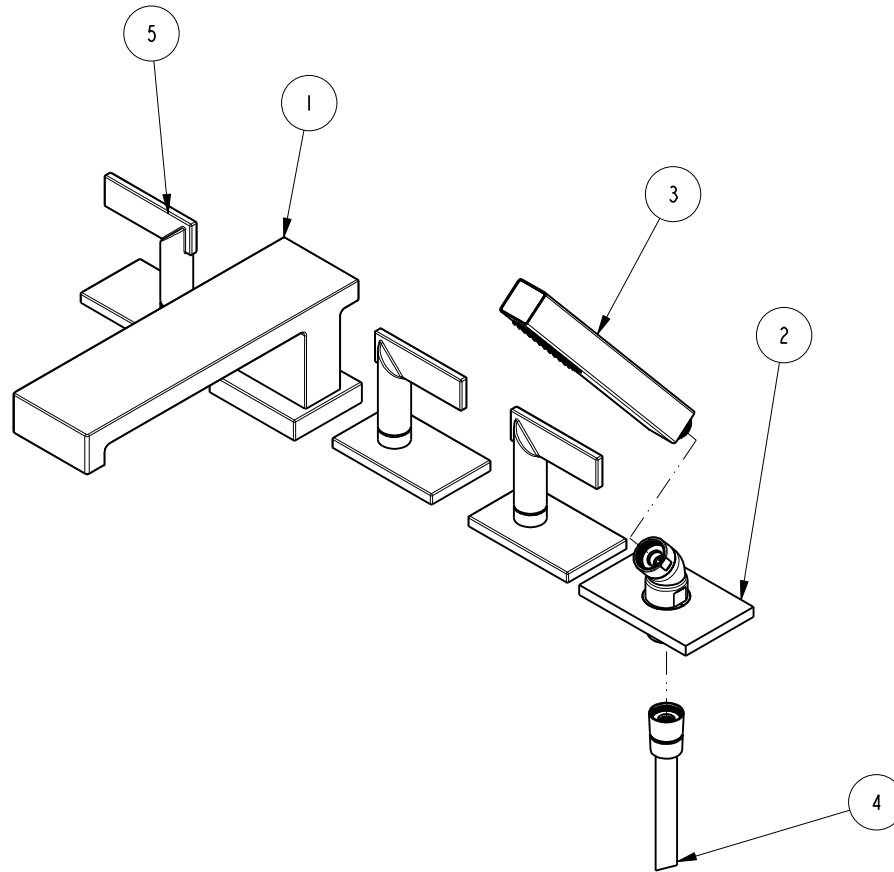
1

NOTES:

(N1) 1. FIT / FORM / FUNCTION SHALL FOLLOW PS-E.008.

BILL OF MATERIAL (CURRENT LEVEL)

ITEM	PT/ASSY	DESCRIPTION	TYPE	QTY.
1	2-941	R/T SPOUT ASM	ASSEMBLY	1
2	6-289-9	HANDSHOWER-ESC ASM	ASSEMBLY	1
3	283-102	SQUARE WAND HANDSHOWER	ASSEMBLY	1
4	284	59 IN. SPIRAL SHOWER HOSE	ASSEMBLY	1
5	3-609	LEVER HANDLE ASM	ASSEMBLY	3



TESTING	-	-	-	UNITS ARE: INCHES [MM]
ASSEMBLY	-	-	-	TOLERANCES ARE:
PLATING	-	-	-	FRACTIONS DECIMALS ANGLES
POLISHING	-	NEXT ASSY	USED ON	±1/16" .X ±.1 [2,5] ±1°
MACHINING	-	APPLICATION		(X.XXX) DENOTES CRITICAL DIMS. ALL THREADS ARE CRITICAL
TOOLING	FIXTURE #	REMOVE ALL BURRS AND SHARP EDGES		DRAWN JINSON 06/01/18
				CHECKED J.A. 06/01/18
				APPROVED J.A. 06/01/18

**BRASSTECH** 2001 CARNEGIE AVE. SANTA ANA, CA 92705 (949) 417-5207  
INCORPORATED

R/T FAUCET WITH HAND SHOWER

DWG NO. **3-2547** REV B

SCALE .200 REF. - SHEET | OF 3

-	B	EN-3397	06/01/18	J.A.	COPYRIGHT 2005 BRASSTECH, INC. THESE DRAWINGS AND THE DESIGNS DEPICTED HEREIN ARE THE PROPRIETARY PROPERTY OF BRASSTECH. ANY USE OR REPRODUCTION IS SUBJECT TO THE EXPRESS APPROVAL OF BRASSTECH. UNAUTHORIZED USE IS STRICTLY PROHIBITED. ALL RIGHTS RESERVED.
-	A	EN-3334	1/18/18	J.A.	
-	-	EN-2774c	01/27/15	J.M	
ZONE	REV	DESCRIPTION	DATE	APPROVED	

4

3

2

1

D

D

C

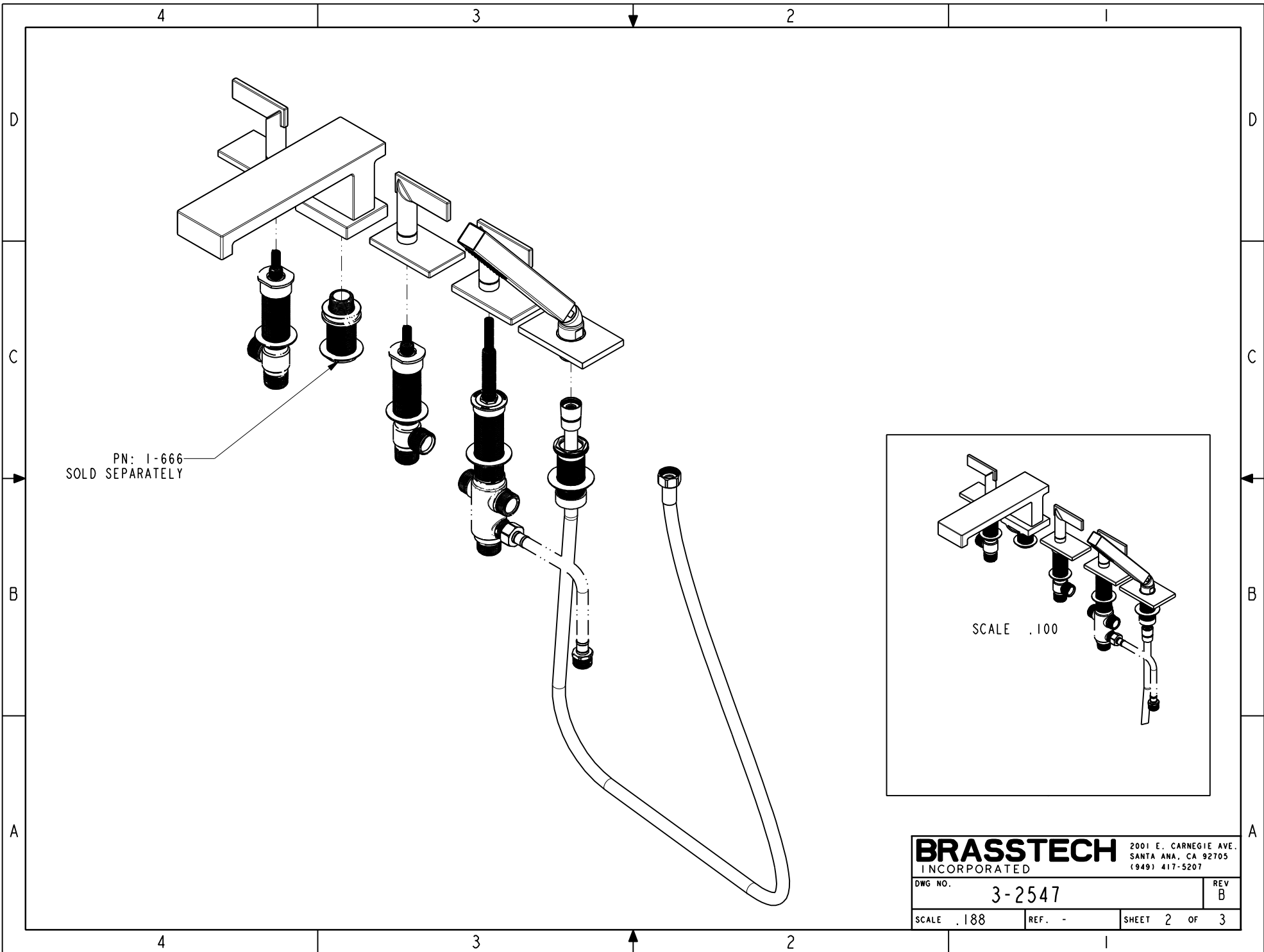
C

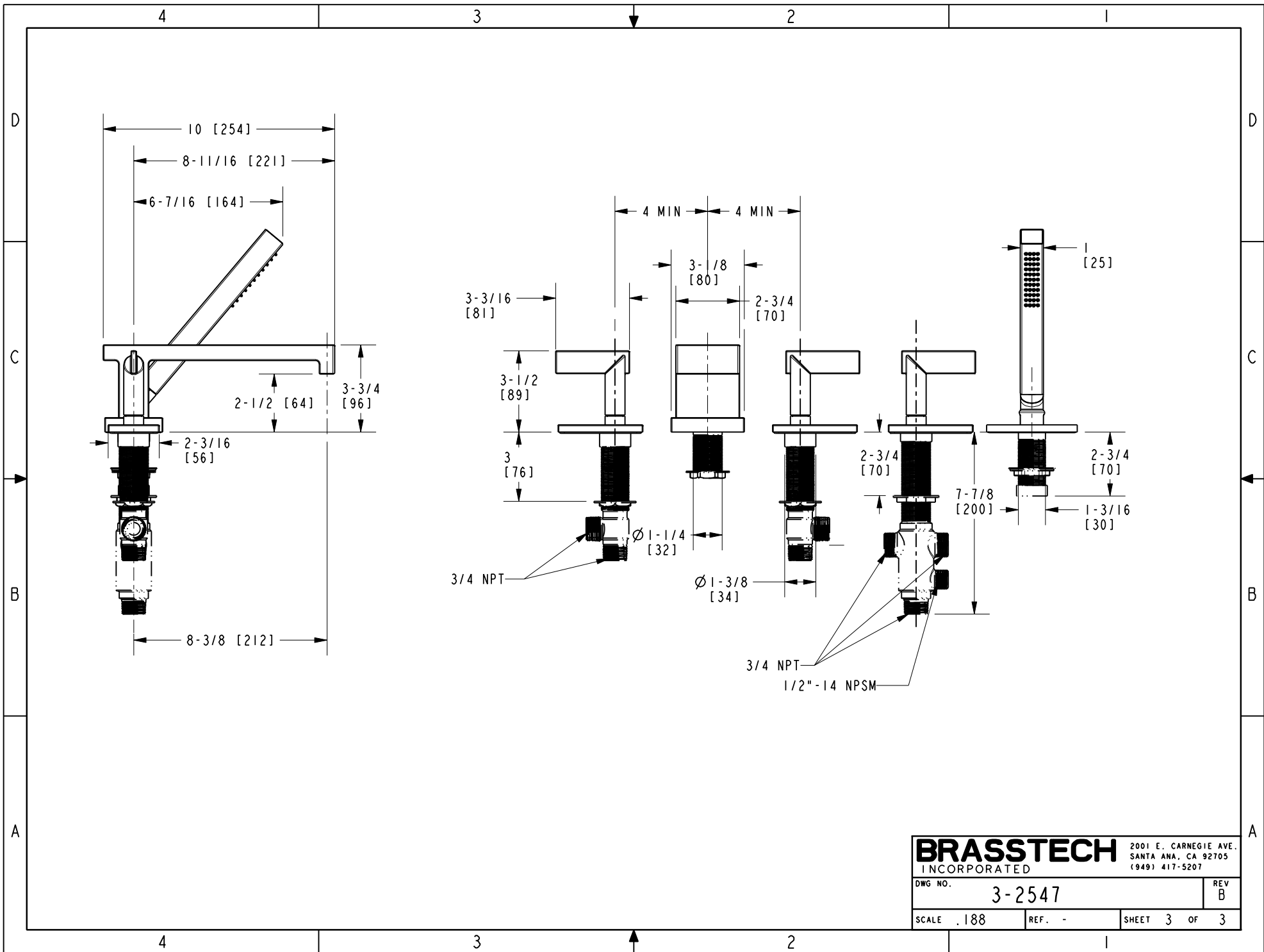
B

B

A

A





<b>BRASSTECH</b>		2001 E. CARNEGIE AVE.
INCORPORATED		SANTA ANA, CA 92705
DWG NO. 3-2547		REV B
SCALE .188	REF. -	SHEET 3 OF 3