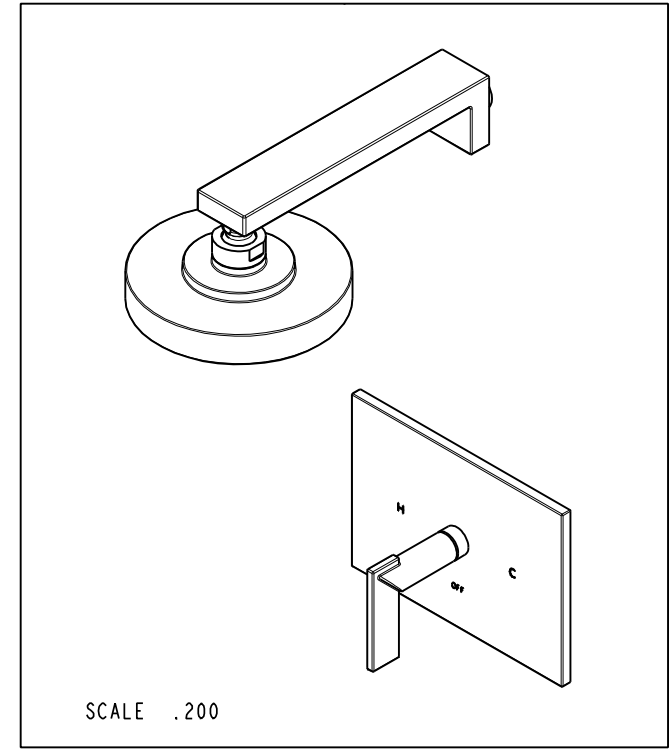
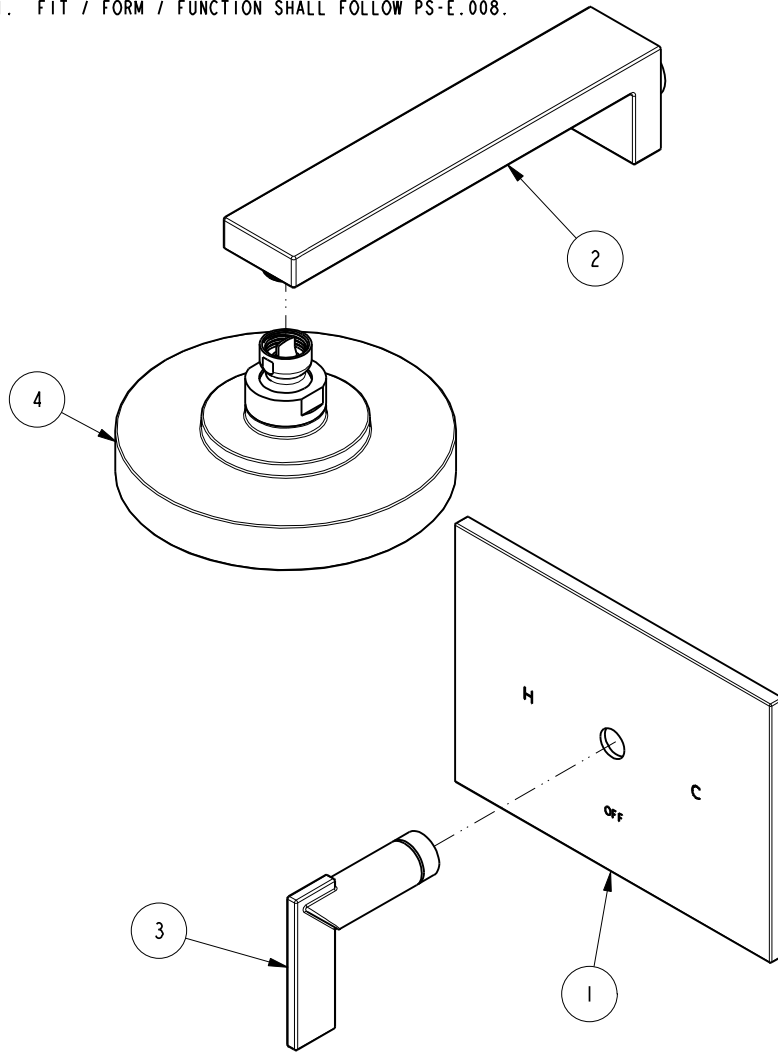


NOTES:

(N1) 1. FIT / FORM / FUNCTION SHALL FOLLOW PS-E.008.

BILL OF MATERIAL (CURRENT LEVEL)

| ITEM | PT/ASSY | DESCRIPTION | TYPE | QTY. |
|------|---------|-----------------------------------|----------|------|
| 1 | 8-033 | SHOWER PLATE ASM | ASSEMBLY | 1 |
| 2 | 201-2 | SOREN SHOWER ARM | ASSEMBLY | 1 |
| 3 | 20-300 | LEVER ASM | ASSEMBLY | 1 |
| 4 | 2141 | CONTEMP. SHOWER HEAD - SINGLE JET | ASSEMBLY | 1 |



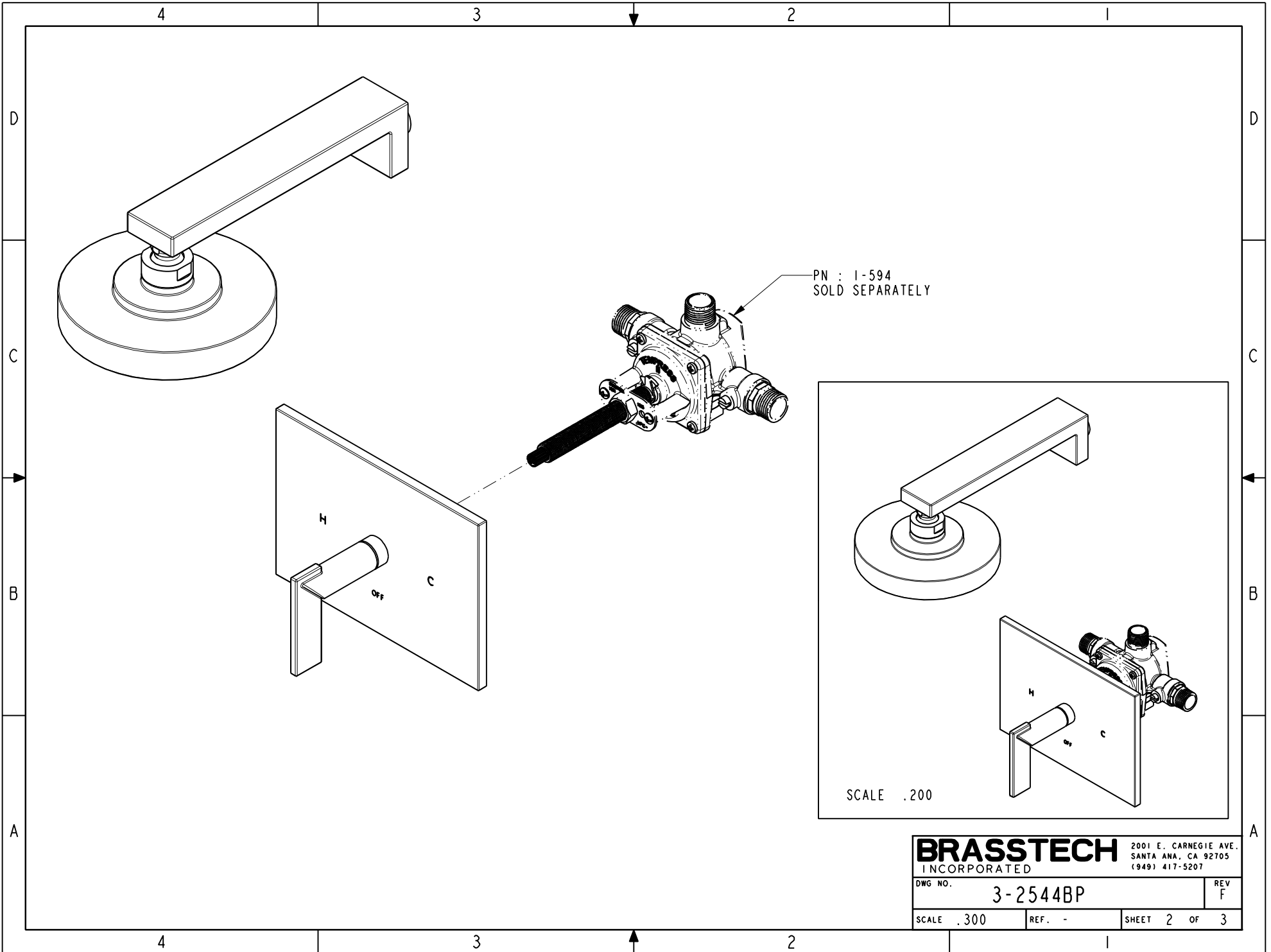
| - | F | EN-3334 | 01/09/18 | J.A. |
|------|-----|-------------|----------|----------|
| - | E | EN-3178 | 11/01/16 | J.M. |
| - | D | EN-2068 | 02/09/12 | J.M. |
| - | C | EN-1512 | 11/09/11 | - |
| - | B | EN-1839 | 08/10/11 | - |
| - | A | EN-1814 | 07/01/11 | - |
| - | - | EN-1735 | 06/10/11 | - |
| ZONE | REV | DESCRIPTION | DATE | APPROVED |

COPYRIGHT 2005 BRASSTECH, INC. THESE DRAWINGS AND THE DESIGNS DEPICTED HEREIN ARE THE PROPRIETARY PROPERTY OF BRASSTECH. ANY USE OR REPRODUCTION IS SUBJECT TO THE EXPRESS APPROVAL OF BRASSTECH. UNAUTHORIZED USE IS STRICTLY PROHIBITED. ALL RIGHTS RESERVED.

| | | | |
|-------------------|----------------------------------|-------------|---------|
| TESTING | - | - | - |
| ASSEMBLY | - | - | - |
| PLATING | - | - | - |
| POLISHING | - | NEXT ASSY | USED ON |
| MACHINING | - | APPLICATION | |
| TOOLING FIXTURE # | REMOVE ALL BURRS AND SHARP EDGES | | |

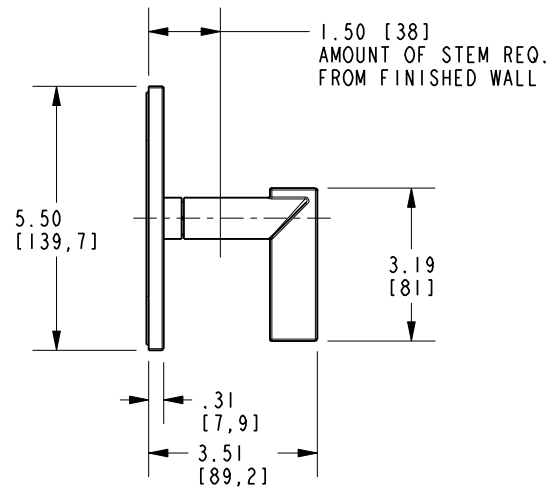
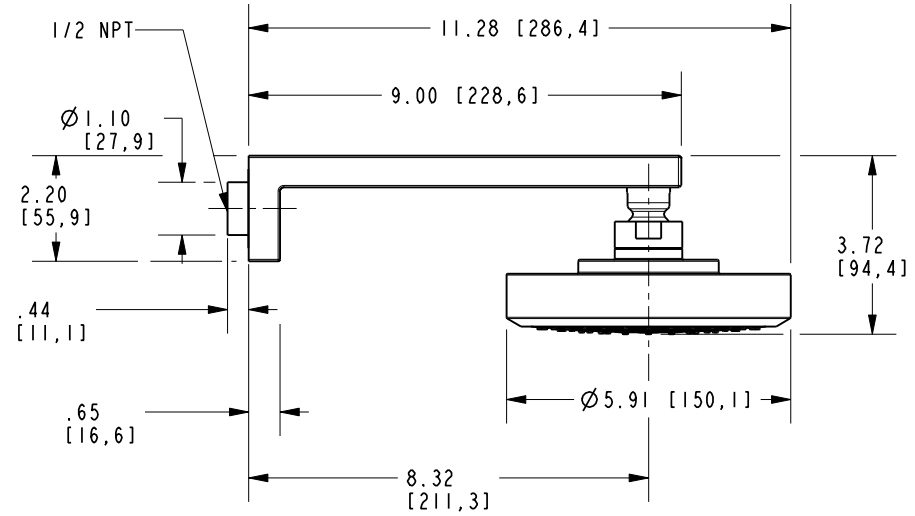
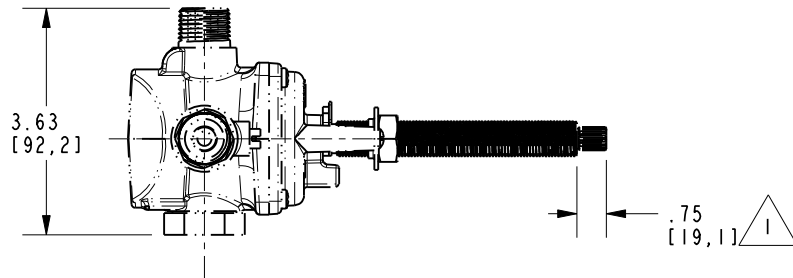
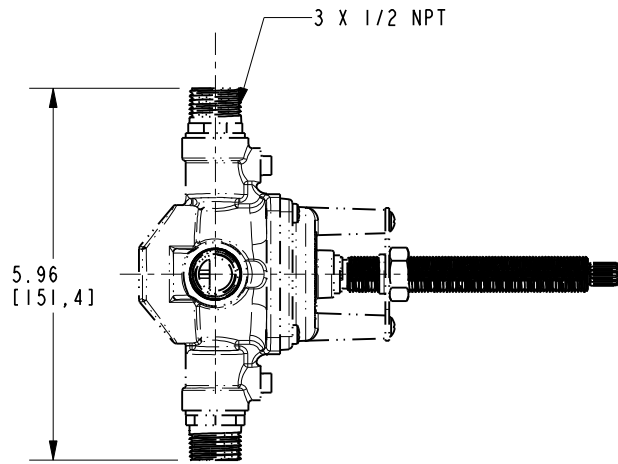
| | |
|---|---------------------|
| UNITS ARE: INCHES [MM] | |
| TOLERANCES ARE: | |
| FRACTIONS DECIMALS | ANGLES |
| $\pm 1/16"$ | $\pm 1"$ |
| .X $\pm .1$ [2.5] | .XX $\pm .06$ [1.5] |
| (X.XXX) DENOTES CRITICAL DIMS. ALL THREADS ARE CRITICAL | |
| DRAWN | JINSON 01/09/18 |
| CHECKED | J.A. 01/09/18 |
| APPROVED | J.A. 01/09/18 |

| | | | |
|--------------------|------|---|----|
| BRASSTECH | | 2001 CARNEGIE AVE. SANTA ANA, CA 92705 (949) 417-5207 | |
| INCORPORATED | | | |
| BP SHOWER TRIM SET | | | |
| DWG NO. | | REV | |
| 3-2544BP | | F | |
| SCALE | REF. | SHEET | OF |
| .300 | - | 1 | 3 |



NOTES:

1. CUT ALL THREADS 0.75" SHORTER THAN STEM.



| | | | |
|------------------|----------|--|----------|
| BRASSTECH | | 2001 E. CARNEGIE AVE. SANTA ANA, CA 92705 (949) 417-5207 | |
| INCORPORATED | | | |
| DWG NO. | 3-2544BP | | REV F |
| SCALE .250 | REF. - | SHEET 3 OF 3 | |