

NOTES:

1. ORIENTATION OF ITEM 4 AND ITEM 6 IS SHOWN IN FIGURE 1 AND FIGURE 2.

BILL OF MATERIAL (CURRENT LEVEL)

| ITEM | PT/ASSY | DESCRIPTION                         | TYPE     | QTY. |
|------|---------|-------------------------------------|----------|------|
| 1    | 80185   | ESCUTCHEON                          | PART     | 1    |
| 2    | 92070   | WOOD SCREW, #14 X 2" SS             | PART     | 1    |
| 3    | 91368   | WALL ANCHOR PLASTIC, 12-1/4         | PART     | 1    |
| 4    | 2-606   | HANDSPRAY HOLDER                    | ASSEMBLY | 1    |
| 5    | 91159   | O-RING, (PARKER #2-029)             | PART     | 1    |
| 6    | 92242   | 10-24 X 1/4 CONE POINT SS SET SCREW | PART     | 1    |

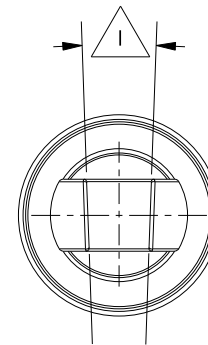
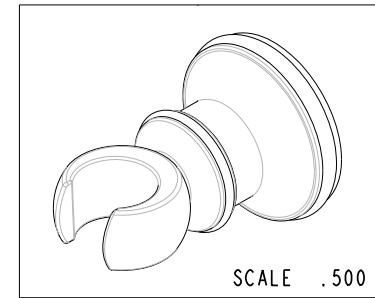
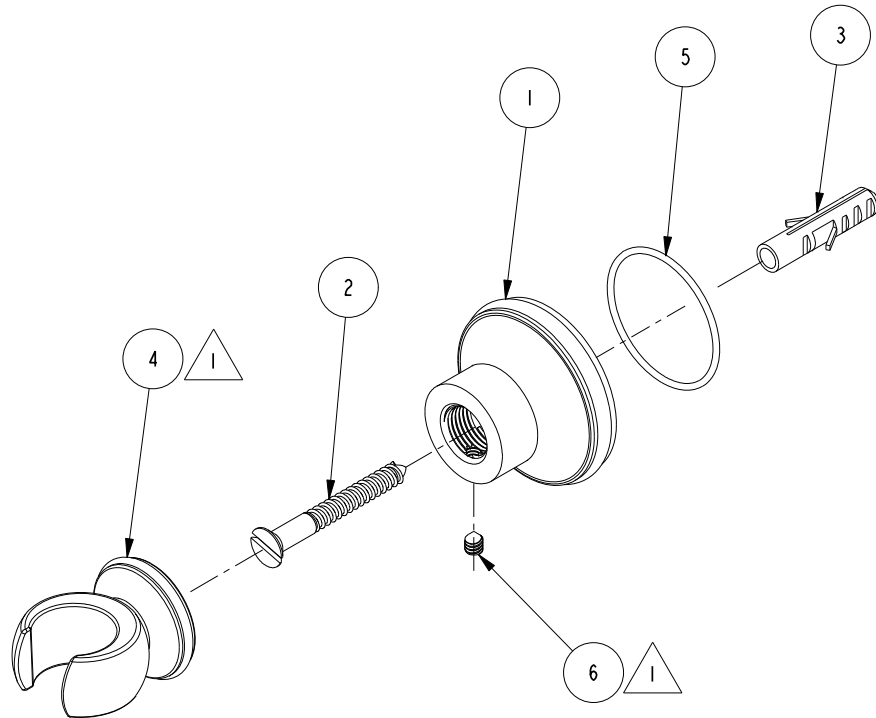


FIGURE 1

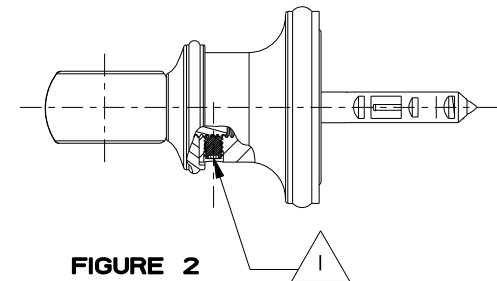


FIGURE 2

COPYRIGHT 2005 BRASSTECH, INC. THESE DRAWINGS AND THE DESIGNS DEPICTED HEREIN ARE THE PROPRIETARY PROPERTY OF BRASSTECH. ANY USE OR REPRODUCTION IS SUBJECT TO THE EXPRESS APPROVAL OF BRASSTECH. UNAUTHORIZED USE IS STRICTLY PROHIBITED. ALL RIGHTS RESERVED.

**BRASSTECH**  
INCORPORATED  
2001 E. CARNEGIE AVE.  
SANTA ANA, CA 92705  
(949) 417-5207

HANDSPRAY WALL MOUNT ASM

ASSY. NO. 297

SCALE .500

REF. -

SHEET 1 OF 1

|     |          |          |
|-----|----------|----------|
| B   | EN-1426  | 07/15/10 |
| A   | EN-1206  | 03/20/09 |
| -   | EN-1129  | 12/02/08 |
| REV | REV DESC | DATE     |