

BILL OF MATERIAL (CURRENT LEVEL)

ITEM	PT/ASSY	DESCRIPTION	TYPE	QTY.
1	11458	ESCUTCHEON	PART	1
2	92070	WOOD SCREW, #14 X 2" SS	PART	1
3	91368	WALL ANCHOR PLASTIC, 12-1/4	PART	1
4	91159	O-RING, (PARKER #2-029)	PART	1
5	92242	10-24 X 1/4 CONE POINT SS SET SCREW	PART	1
6	2-607	HANDSPRAY HOLDER, CONTEMP.	ASSEMBLY	1

NOTES:

1. ORIENTATION OF ITEM 5 AND ITEM 6 IS SHOWN IN FIGURE 1 AND FIGURE 2.

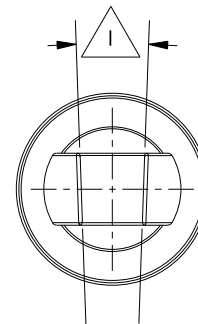
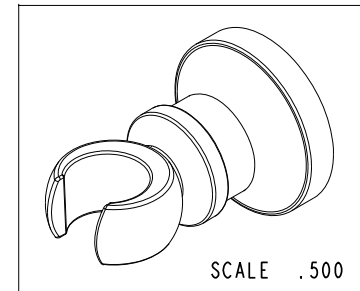
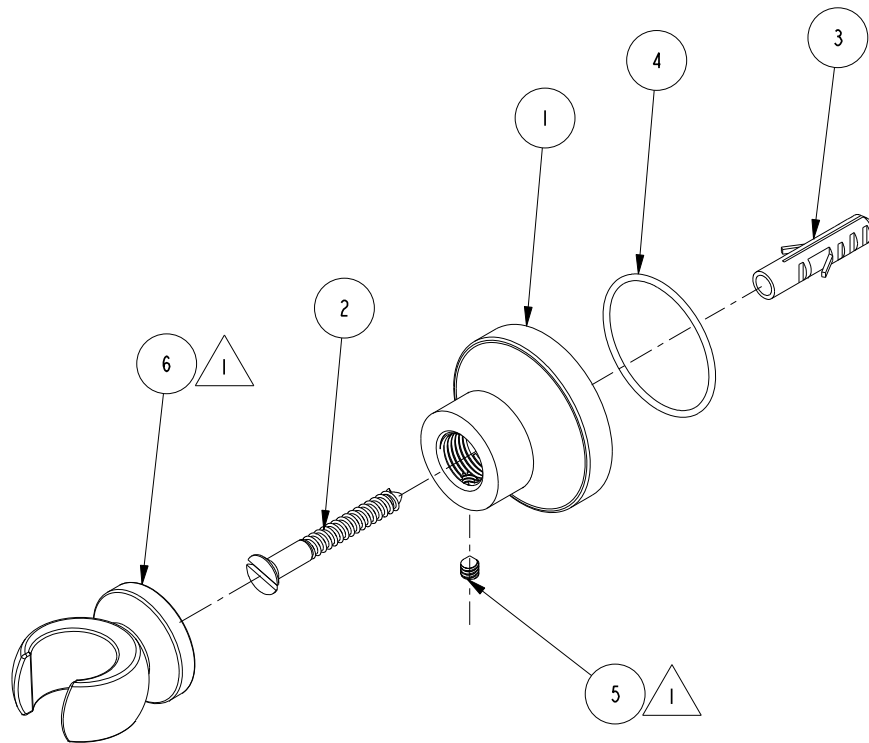


FIGURE 1

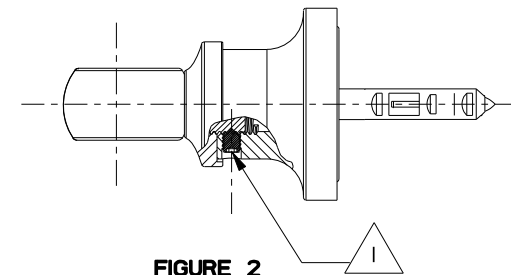


FIGURE 2

COPYRIGHT 2005 BRASSTECH, INC. THESE DRAWINGS AND THE DESIGNS DEPICTED HEREIN ARE THE PROPRIETARY PROPERTY OF BRASSTECH. ANY USE OR REPRODUCTION IS SUBJECT TO THE EXPRESS APPROVAL OF BRASSTECH. UNAUTHORIZED USE IS STRICTLY PROHIBITED. ALL RIGHTS RESERVED.

BRASSTECH
INCORPORATED
2001 E. CARNEGIE AVE.
SANTA ANA, CA 92705
(949) 417-5207

HANDSPRAY WALL MOUNT ASSY, CONTEMP

ASSY. NO.		296	
SCALE .500	REF. -	SHEET 1	OF 1
REV	REV DESC	DATE	
B	EN-1426	07/15/10	
A	EN-1206	03/20/09	
-	ECN-1129	11/18/08	