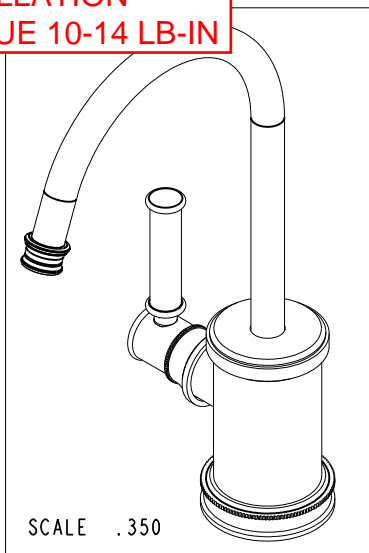


NOTES:

- (N1) 1. FIT / FORM / FUNCTION SHALL FOLLOW PS-E.008.
- 2. CUT AND SHORTEN O-RING BY .13" TO .20" IN LENGTH BEFORE INSTALLING.
- 3. SLIT O-RING BEFORE INSTALLING.
- 4. APPLY LOCTITE 242.
- (N5) 5. CONNECT WHITE AND RED TUBINGS TOGETHER AND WATER TEST WHOLE UNIT.
- 6. BAG 5-035 IN A SEPARATE BAG.
- 7. REWORK CARTRIDGE ASSY IF THE HANDLE DOES NOT RETURN TO THE "OFF" POSITION AUTOMATICALLY AFTER WATER TESTING.
- 8. INSTALLATION TORQUE: 8-14 LB-FT.
- 9. INSTALLATION TORQUE: 30 LB-FT.
- 10. LUBRICATE SPRING WITH DOW CORNING III.
- 11. PRE-CRIMPED THESE PARTS TOGETHER. SEE INSTALLATION INSTRUCTION.
- 12. APPLY THIN FILM OF DOW CORNING III.
- 13. APPLY LOCTITE 680.

14 INSTALLATION TORQUE 10-14 LB-IN



SCALE .350

COPYRIGHT 2005 BRASSTECH, INC. THESE DRAWINGS AND THE DESIGNS DEPICTED HEREIN ARE THE PROPRIETARY PROPERTY OF BRASSTECH. ANY USE OR REPRODUCTION IS SUBJECT TO THE EXPRESS APPROVAL OF BRASSTECH. UNAUTHORIZED USE IS STRICTLY PROHIBITED. ALL RIGHTS RESERVED.

A	EN-3293	3/31/17	J.A.	
-	EN-2980	09/29/16	J.A.	
ZONE	REV	DESCRIPTION	DATE	APPROVED

TESTING	-	-	-
ASSEMBLY	-	-	-
PLATING	-	-	-
POLISHING	-	NEXT ASSY	USED ON
MACHINING	-	APPLICATION	
TOOLING	FIXTURE #	REMOVE ALL BURRS AND SHARP EDGES	

UNITS ARE: INCHES [MM]
TOLERANCES ARE:
FRACTIONS DECIMALS ANGLES
±1/16" .X ±.1 [2.5] ±1°
.XX ±.06 [1.5]

(X.XXX) DENOTES CRITICAL DIMS. ALL THREADS ARE CRITICAL

DRAWN VINAY 09/29/16
CHECKED RAVINDRA 09/29/16
APPROVED J.A. 09/29/16

BILL OF MATERIAL (CURRENT LEVEL)

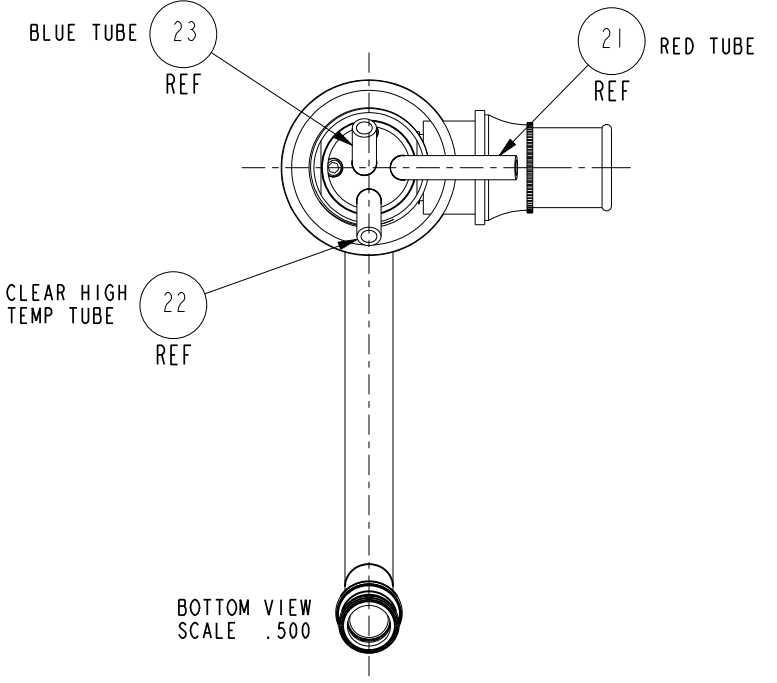
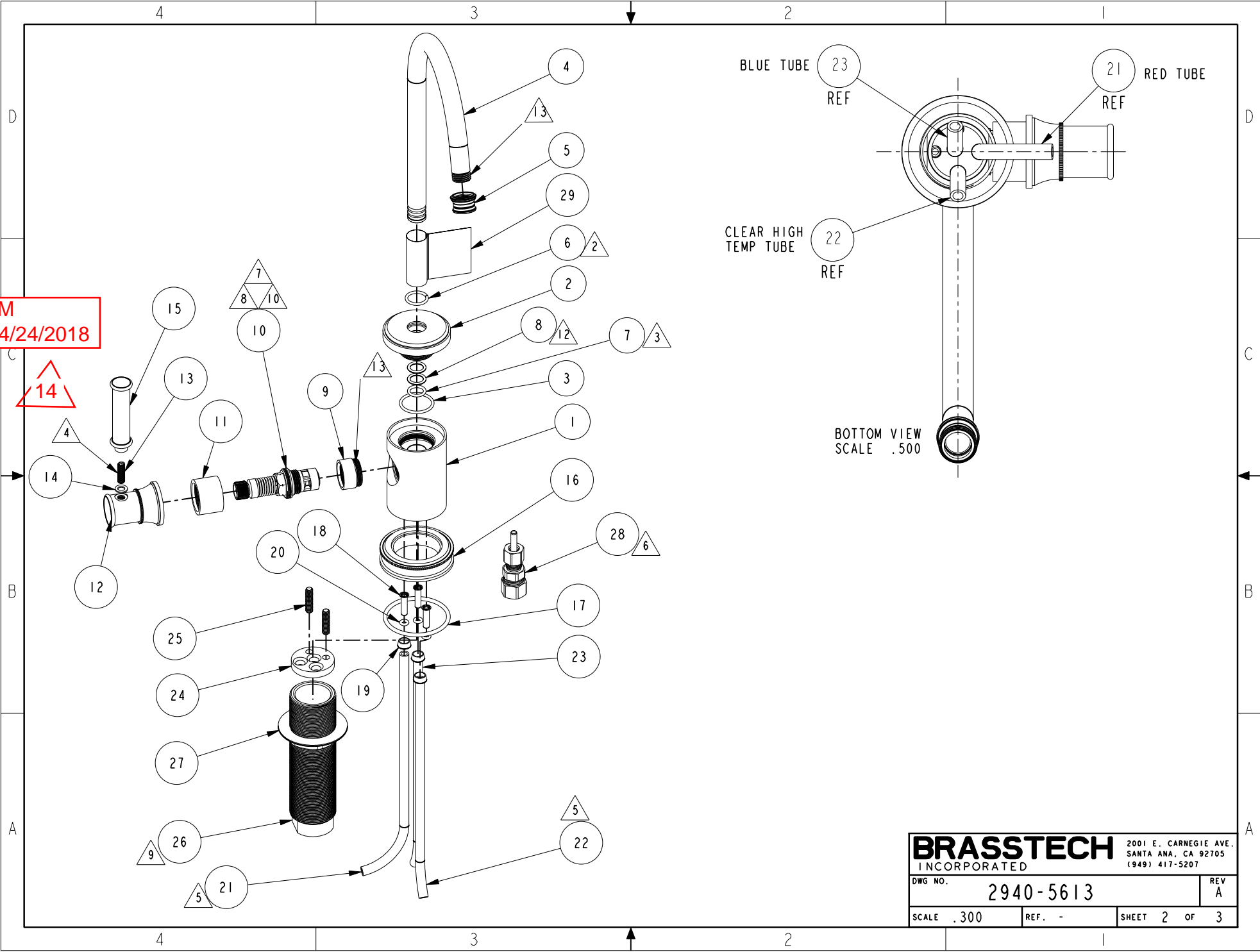
ITEM	PT/ASSY	DESCRIPTION	TYPE	QTY.
1	12578	BODY	PART	1
2	12513	BODY CAP	PART	1
3	91023	O-RING, #2- 019, EPDM, 65-75 DURO, NSF 61	PART	1
4	50713	SPOUT, WATER DISP. (TRAD.)	PART	1
5	11733	SHELL, SPOUT, WATER DISP	PART	1
6	91383	O-RING, #2- 014, TEFLON, NSF 61	PART	1
7	91382	O-RING, #2- 012, TEFLON,	PART	1
8	91017	O-RING, #2- 012, EPDM, 65-75 DURO, NSF 61	PART	2
9	50714	WATER DISP. CAR.T HOLDER	PART	1
10	5-061	ADAPTER/CARTRIDGE ASSY	ASSEMBLY	1
11	12512	BONNET	PART	1
12	12515	HANDLE HUB	PART	1
13	92192	SCRW, 10-32 X 5/8 SKT HD CUP PT SS	PART	1
14	91553	RED IDENTIFIER	PART	1
15	12514	LEVER HANDLE	PART	1
16	12511	ESCUTCHEON	PART	1
17	91362	O-RING, #2-130, EPDM, 65-75 DURO	PART	1
18	50068	INSERT, HOSE	PART	3
19	50066	COMPRESSION RING, 1/2	PART	3
20	91100	O-RING, #2-006, EPDM, 65-75 DURO	PART	3
21	91376	TUBE, RED, .250 OD X 4 FT	PART	1
22	91378	TUBE, HIGH TEMP, .250 OD X 4 FT	PART	1
23	91377	TUBE, BLUE, .250 OD X 4 FT	PART	1
24	50768	RETAINER PLATE	PART	1
25	92016	SCRW, 10-24 X 3/4 SKT HD FLT PT SS	PART	2
26	50770	NIPPLE	PART	1
27	10174	NUT, QUICK CONNECT	PART	1
28	5-035	COUPLING & INSERT ASM	ASSEMBLY	1
29	98043	TAG LABEL, HOT WATER WARNING	PART	1

BRASSTECH 2001 CARNEGIE AVE.
INCORPORATED SANTA ANA, CA 92705
(949) 417-5207

HOT WATER DISP, CONTEMP

DWG NO.	2940-5613	REV	A
SCALE	.350	REF.	-
SHEET	1	OF	3

JM
04/24/2018



BRASSTECH		2001 E. CARNEGIE AVE. SANTA ANA, CA 92705 (949) 417-5207	
DWG NO.	2940-5613	REV	A
SCALE	.300	REF.	-
		SHEET	2 OF 3

