

NOTES:

(NI) 1. FIT / FORM / FUNCTION SHALL FOLLOW PS-E.008.

2 WHEN TIGHTENING APPLY 90-100 LB-IN OF TORQUE.

3 TIGHTEN SETSCREW TO 7-8 LB-IN OF TORQUE.

BILL OF MATERIAL (CURRENT LEVEL)				
ITEM	PT/ASSY	DESCRIPTION	TYPE	QTY.
1	2-926	SPOUT BODY ASSEMBLY	ASSEMBLY	1
2	2-919	ESCUTHEON ASSEMBLY	ASSEMBLY	1
3	12226	WATERWAY CONNECTOR	PART	1
4	92025	SCRW, 10-24 X 3/8 SKT HD CUP PT SS	PART	1
5	2-918	SPOUT ASSEMBLY	ASSEMBLY	1
6	1-259	MIXING VALVE - FX25	ASSEMBLY	1
7	91633	WSHR, 1.34 ID X 1.5 OD X .032 THK, FLT, NYLON	PART	1
8	2-920	CAP ASSEMBLY	ASSEMBLY	1
9	2-921	HANDLE ASSEMBLY	ASSEMBLY	1
10	20-372	AERATOR ASM, 1.2 GPM	ASSEMBLY	1
11	1-296	RETAINER NUT ASSEMBLY	ASSEMBLY	1
12	91114	O-RING, #2- 116, EPDM, 65-75 DURO, NSF 61	PART	1
13	330	DRAIN, PUSH DOWN, W/ OVERFLOW	ASSEMBLY	1
14	91675	O-RING, 1 X 5MM ID, EPDM, 65-75 DURO	PART	4
15	92872	HEX KEY, 0.05" ALLOY STEEL	PART	1

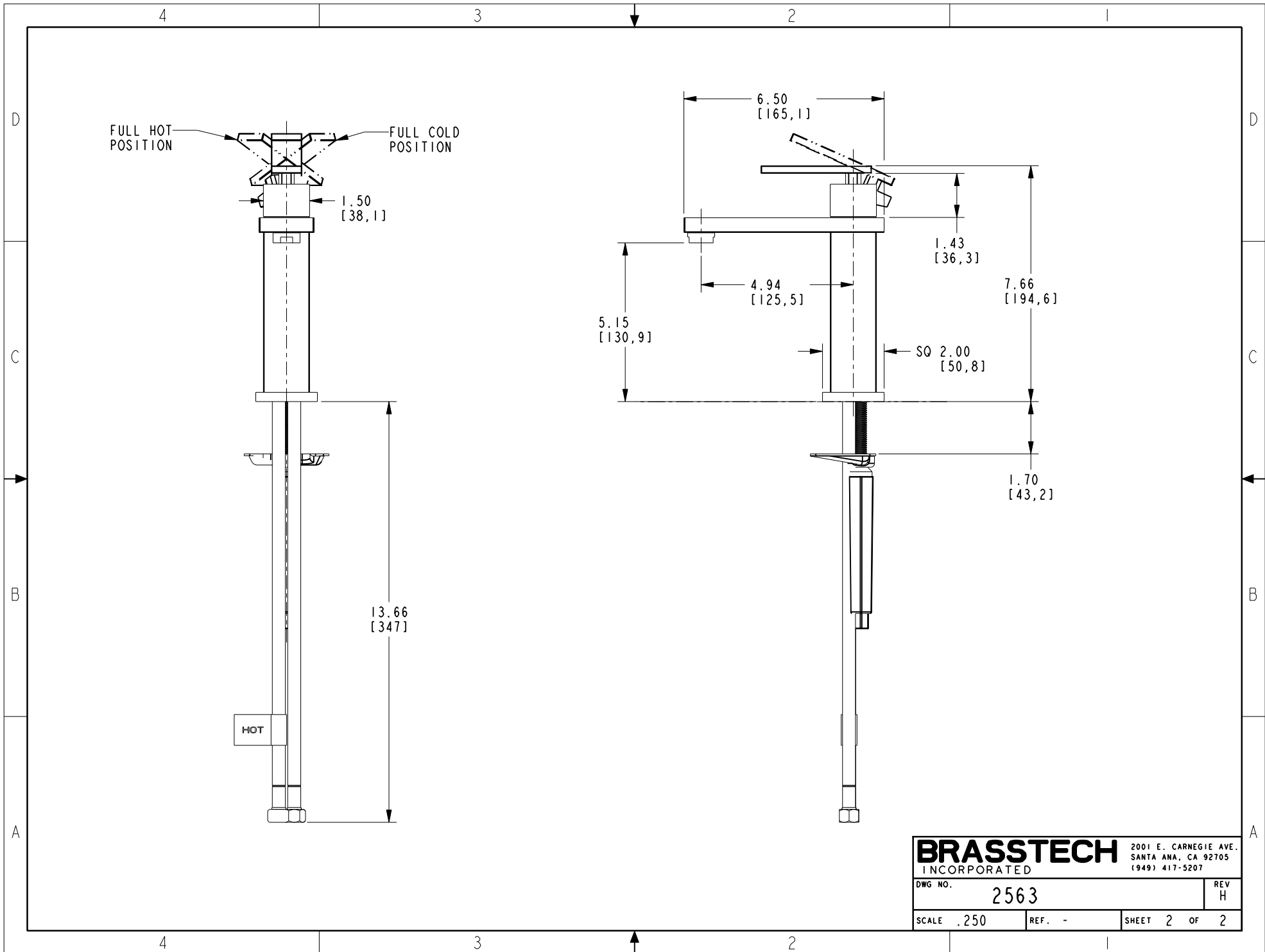
ZONE	REV	DESCRIPTION	DATE	APPROVED
-	H	EN-3718	10/01/18	C.G.
-	G	EN-3629	06/13/18	JM
-	F	EN-3439	10/30/17	J.M.
-	E	EN-3011	03/03/16	J.M.
-	D	EN-2987	12/15/15	J.M.
-	C	EN-2870	04/08/15	J.M.
-	B	EN-2779	07/18/14	-
-	A	EN-2643	05/30/14	-
-	-	EN-2475	03/07/14	-

COPYRIGHT 2005 BRASSTECH, INC. THESE DRAWINGS AND THE DESIGNS DEPICTED HEREIN ARE THE PROPRIETARY PROPERTY OF BRASSTECH. ANY USE OR REPRODUCTION IS SUBJECT TO THE EXPRESS APPROVAL OF BRASSTECH. UNAUTHORIZED USE IS STRICTLY PROHIBITED. ALL RIGHTS RESERVED.

TESTING	-	-	-
ASSEMBLY	-	-	-
PLATING	-	-	-
POLISHING	-	NEXT ASSY	USED ON
MACHINING	-	APPLICATION	
TOOLING FIXTURE #	REMOVE ALL BURRS AND SHARP EDGES		

UNITS ARE: INCHES (MM)
TOLERANCES ARE:
FRACTIONS DECIMALS ANGLES
±1/16" .X ±.1 (2.5) ±1°
.XX ±.06 (1.5)
(X.XXX) DENOTES CRITICAL DIMS.
ALL THREADS ARE CRITICAL
DRAWN JINSON 04/08/15
CHECKED RAVINDRA 04/08/15
APPROVED J.M. 05/26/15

BRASSTECH INCORPORATED		2001 CARNEGIE AVE. SANTA ANA, CA 92705 (949) 417-5207	
SKYLAR - SINGLE HOLE FAUCET			
DWG NO. 2563			REV H
SCALE .188		REF. -	SHEET 1 OF 2



BRASSTECH		2001 E. CARNEGIE AVE. SANTA ANA, CA 92705 (949) 417-5207	
INCORPORATED			
DWG NO.	2563	REV	H
SCALE .250	REF. -	SHEET 2	OF 2