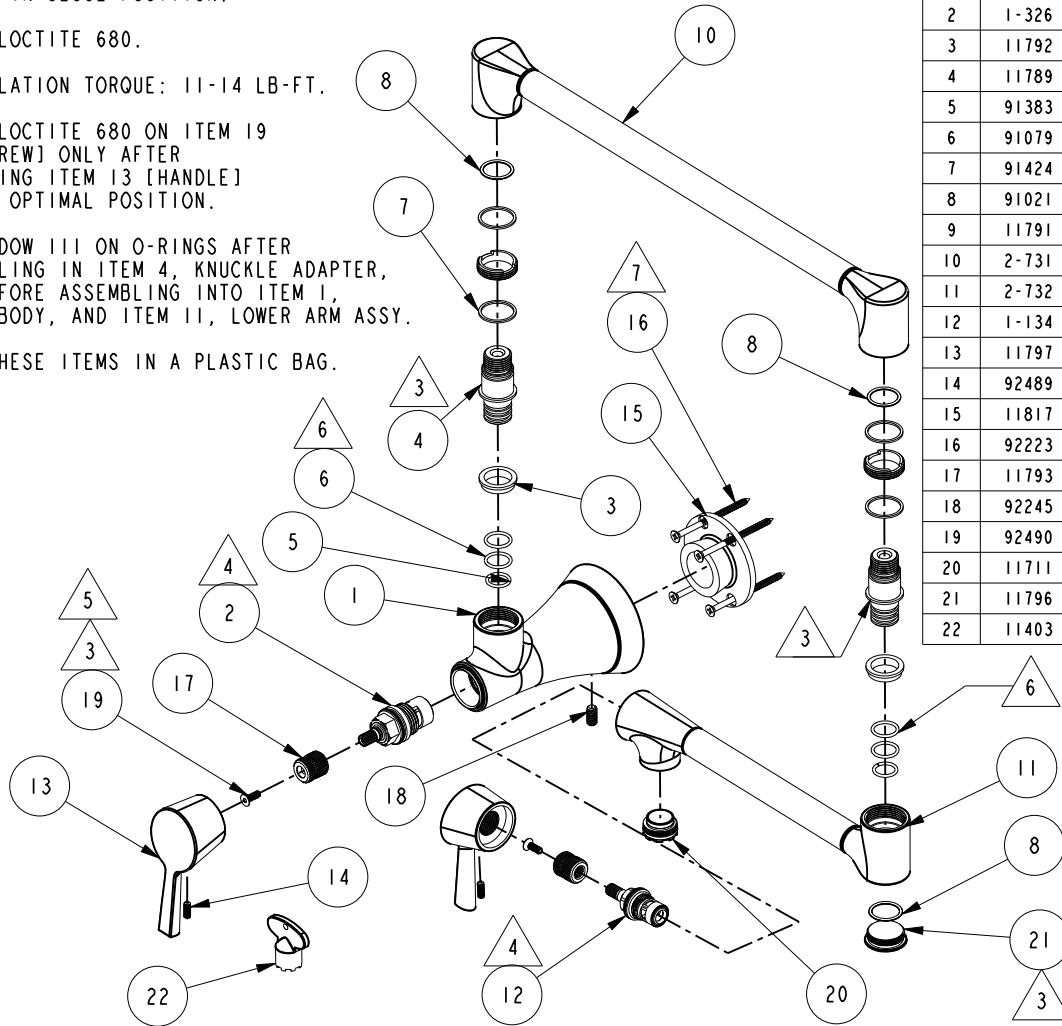


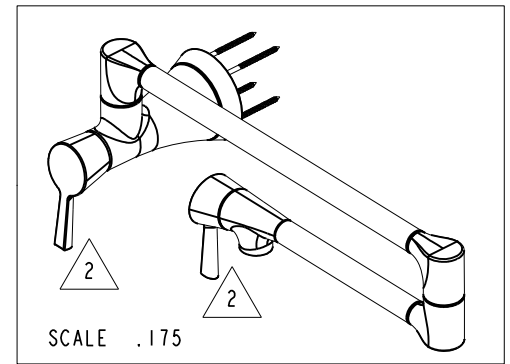
NOTES:

- 1. FIT / FORM / FUNCTION SHALL FOLLOW PS-E.008.
- 2. HANDLE IN CLOSE POSITION.
- 3. APPLY LOCTITE 680.
- 4. INSTALLATION TORQUE: 11-14 LB-FT.
- 5. APPLY LOCTITE 680 ON ITEM 19 [M4 SCREW] ONLY AFTER ADJUSTING ITEM 13 [HANDLE] TO ITS OPTIMAL POSITION.
- 6. APPLY DOW III ON O-RINGS AFTER INSTALLING IN ITEM 4, KNUCKLE ADAPTER, AND BEFORE ASSEMBLING INTO ITEM 1, VALVE BODY, AND ITEM 11, LOWER ARM ASSY.
- 7. PACK THESE ITEMS IN A PLASTIC BAG.



BILL OF MATERIAL (CURRENT LEVEL)

ITEM	PT/ASSY	DESCRIPTION	TYPE	QTY.
1	11798	VALVE BODY, WALL-END	PART	1
2	1-326	W/S CARTRIDGE FRICTION - HOT	PART	1
3	11792	SLEEVE, PLASTIC	PART	2
4	11789	KNUCKLE ADAPTER	PART	2
5	91383	O-RING, #2- 014, TEFLON, NSF 61	PART	2
6	91079	O-RING, #2- 015, EPDM, 65-75 DURO, NSF 61	PART	4
7	91424	WSHR, .81 ID X .93 OD X .045 THK, FLT, PLST	PART	4
8	91021	O-RING, #2- 017, EPDM, 65-75 DURO, NSF 61	PART	3
9	11791	KNUCKLE NUT	PART	2
10	2-731	UPPER ARM ASSY, VESSA	ASSEMBLY	1
11	2-732	LOWER ARM ASSY, VESSA	ASSEMBLY	1
12	1-134	CARTR 3/8 HOT 1/4 TR	PART	1
13	11797	HANDLE	PART	2
14	92489	SCRW, 8-32 X 7/16 SKT HD CUP PT SS	PART	2
15	11817	MOUNTING FLANGE, WALL END VALVE BODY	PART	1
16	92223	SCRW, #8 X 2-1/2 PHL FLT HD SS	PART	4
17	11793	HANDLE ADAPTER	PART	2
18	92245	SCRW, 1/4-20 X 1/2 SKT HD CUP PT SS	PART	1
19	92490	SCRW, M4 X 12 SKT FLT HD CAP SS	PART	2
20	11711	HIDDEN FAUCET AERATOR	PART	1
21	11796	END CAP	PART	1
22	11403	AERATOR KEY	PART	1



ZONE	REV	DESCRIPTION	DATE	APPROVED
-	E	EN-3601	05/07/18	V.V.
-	D	EN-3495	03/26/18	J.A.
-	C	EN-2269	08/30/12	-
-	B	EN-2085	03/01/12	-
-	A	EN-1941	09/27/11	-
-	-	EN-1552-4	02/01/11	-

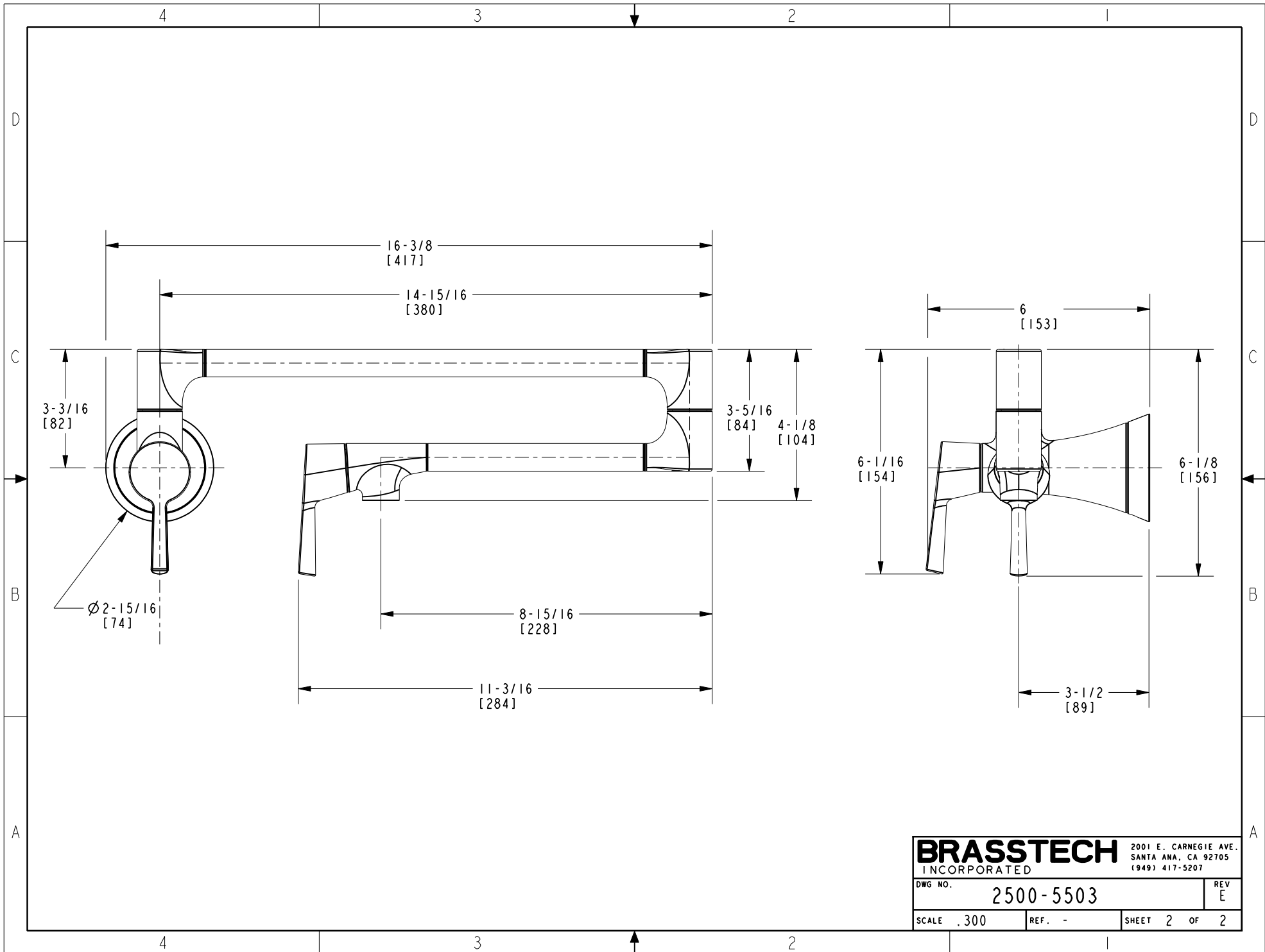
COPYRIGHT 2005 BRASSTECH, INC. THESE DRAWINGS AND THE DESIGNS DEPICTED HEREIN ARE THE PROPRIETARY PROPERTY OF BRASSTECH. ANY USE OR REPRODUCTION IS SUBJECT TO THE EXPRESS APPROVAL OF BRASSTECH. UNAUTHORIZED USE IS STRICTLY PROHIBITED. ALL RIGHTS RESERVED.

TESTING	ASSEMBLY	PLATING	POLISHING	MACHINING	TOOLING FIXTURE #	APPLICATION
-	-	-	-	-	-	REMOVE ALL BURRS AND SHARP EDGES
-	-	-	-	-	-	USED ON
-	-	-	-	-	-	APPLICATION

UNITS ARE: INCHES [MM]  
 TOLERANCES ARE:  
 FRACTIONS DECIMALS ANGLES  
 $\pm 1/16"$  .X  $\pm .1$  [2.5]  $\pm 1^\circ$   
 .XX  $\pm .06$  [1.5]  
 (X.XXX) DENOTES CRITICAL DIMS.  
 ALL THREADS ARE CRITICAL

DRAWN	JINSON	03/26/18
CHECKED	J.A.	03/26/18
APPROVED	J.A.	03/26/18

<b>BRASSTECH</b>		2001 CARNEGIE AVE. SANTA ANA, CA 92705 (949) 417-5207	
INCORPORATED			
VESSA TRANSITIONAL WALL MOUNT POT FILLER "E"			
DWG NO. <b>2500-5503</b>		REV E	
SCALE .210	REF. -	SHEET 1 OF 2	



<b>BRASSTECH</b>		2001 E. CARNEGIE AVE.	
INCORPORATED		SANTA ANA, CA 92705	
DWG NO. 2500-5503		REV E	
SCALE .300	REF. -	SHEET 2 OF 2	