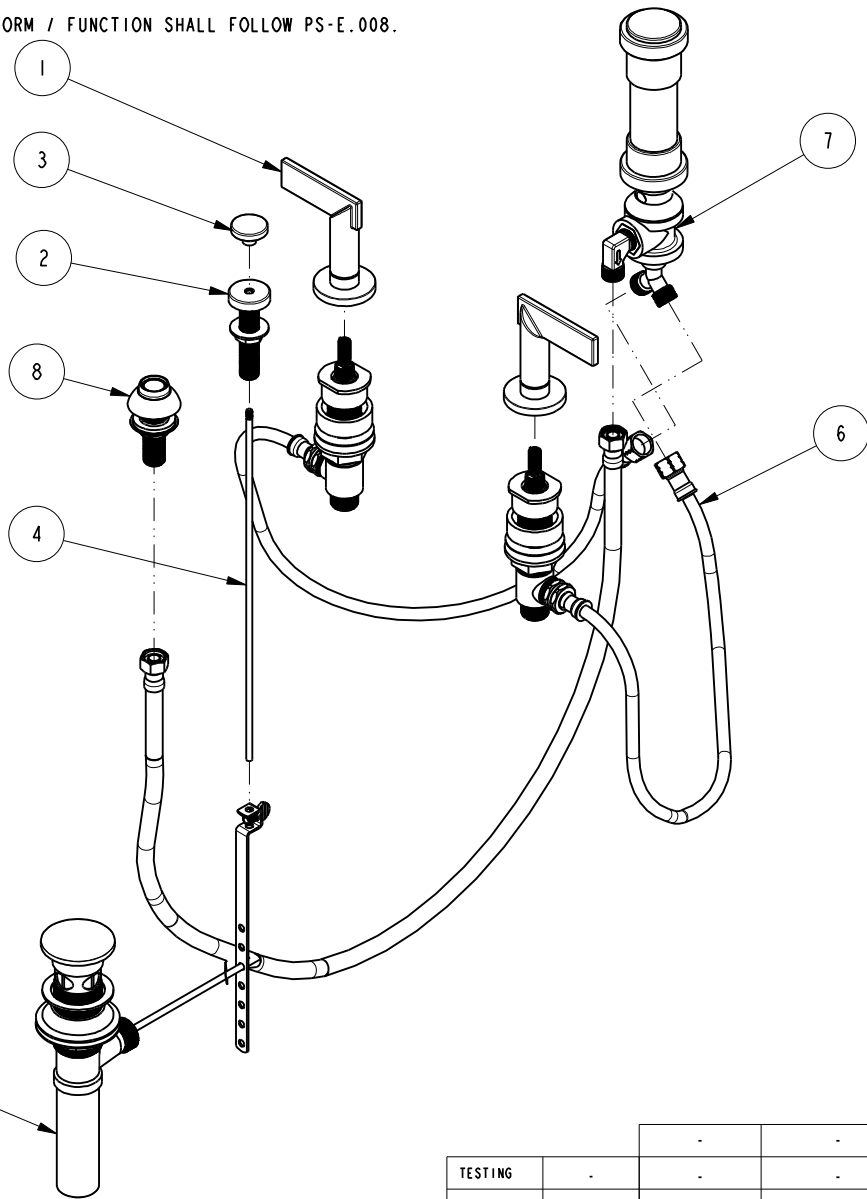


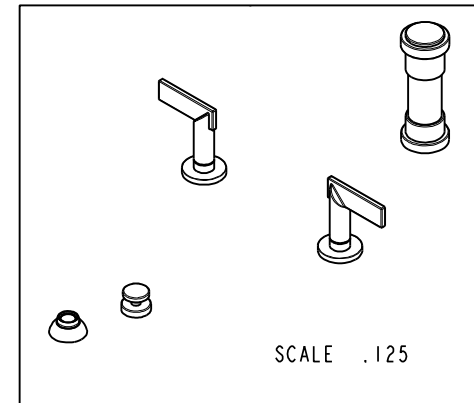
NOTES:

(N1) 1. FIT / FORM / FUNCTION SHALL FOLLOW PS-E.008.



BILL OF MATERIAL (CURRENT LEVEL)

ITEM	PT/ASSY	DESCRIPTION	TYPE	QTY.
1	3-608	LEVER HADNLE	ASSEMBLY	2
2	8-038	POP-UP GUIDE ASM	ASSEMBLY	1
3	80080	POP UP KNOB, ROUND	PART	1
4	10288	3/16" POP UP ROD	PART	1
5	325	POP UP ASSEMBLY	ASSEMBLY	1
6	1-727	VALVE KIT - BIDET	ASSEMBLY	1
7	8-039	BIDET VACUUM BREAKER DIVERTER ASM	ASSEMBLY	1
8	2-236	DOUCHE SPRAY ASSEMBLY	ASSEMBLY	1



UNITS ARE: INCHES [MM]
 TOLERANCES ARE:
 FRACTIONS DECIMALS ANGLES
 $\pm 1/16"$.X $\pm .1$ [2,5] $\pm 1^\circ$
 .XX $\pm .06$ [1,5]
 (X.XXX) DENOTES CRITICAL DIMS.
 ALL THREADS ARE CRITICAL

BRASSTECH 2001 CARNEGIE AVE.
 INCORPORATED SANTA ANA, CA 92705
 (949) 417-5207

BIDET SET

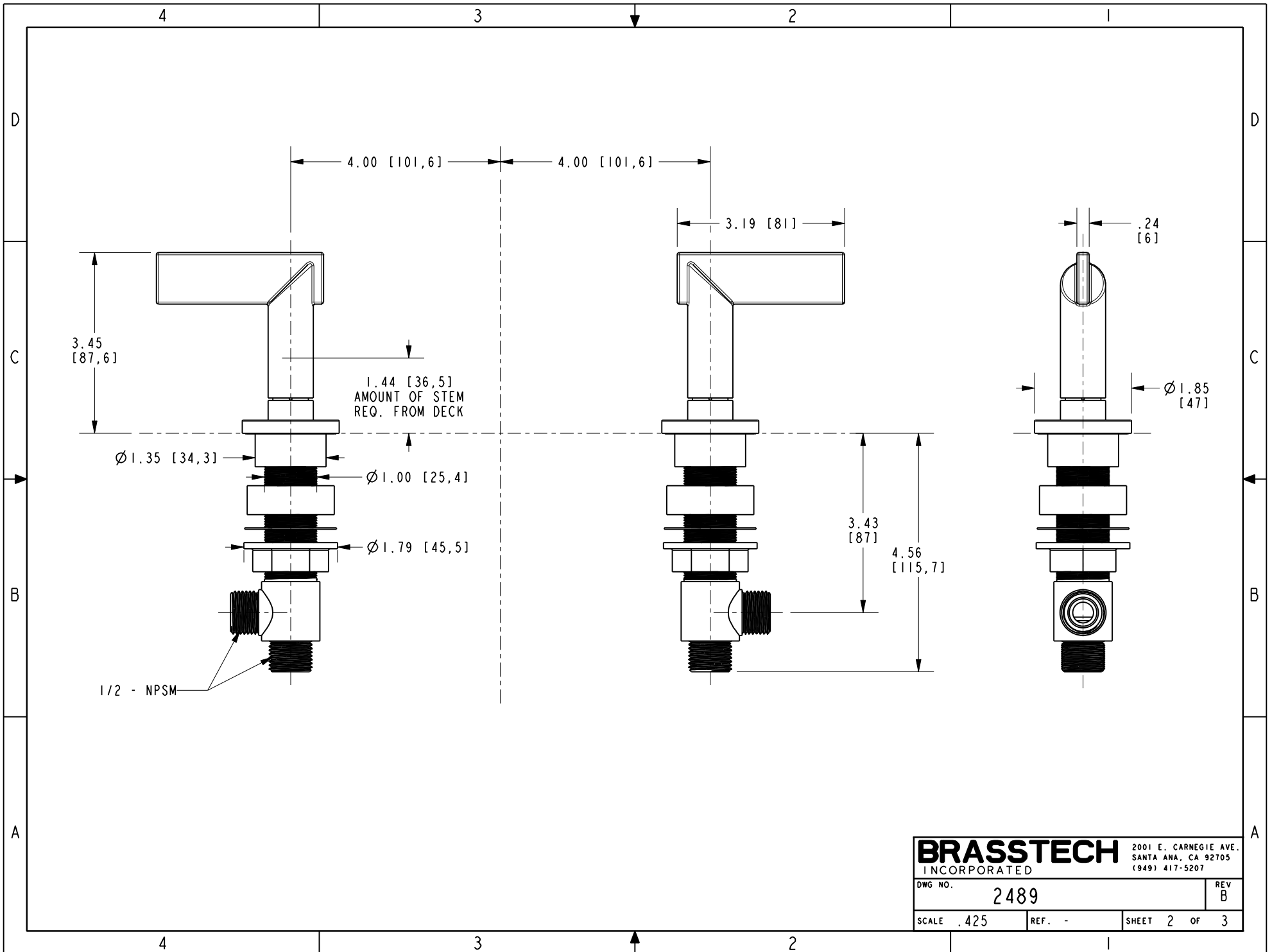
ZONE	REV	DESCRIPTION	DATE	APPROVED
-	B	EN-3334	01/05/18	J.A.
-	A	EN-2541-1	09/05/14	-
-	-	EN-0995-3	01/31/11	-

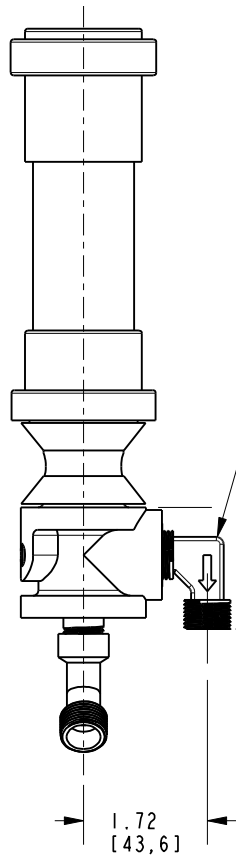
COPYRIGHT 2005 BRASSTECH, INC.
 THESE DRAWINGS AND THE DESIGNS
 DEPICTED HEREIN ARE THE PROPRIETARY
 PROPERTY OF BRASSTECH. ANY USE
 OR REPRODUCTION IS SUBJECT TO
 THE EXPRESS APPROVAL OF BRASSTECH.
 UNAUTHORIZED USE IS STRICTLY
 PROHIBITED. ALL RIGHTS RESERVED.

TESTING	ASSEMBLY	PLATING	POLISHING	MACHINING	TOOLING FIXTURE #	APPLICATION
-	-	-	-	-	-	REMOVE ALL BURRS AND SHARP EDGES

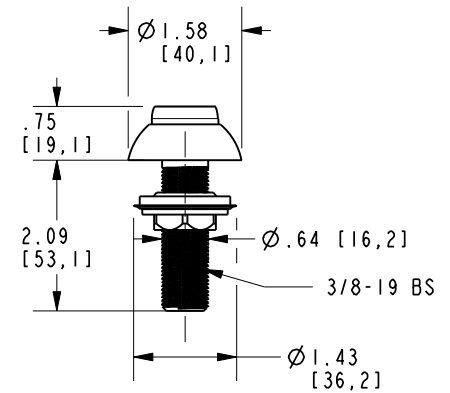
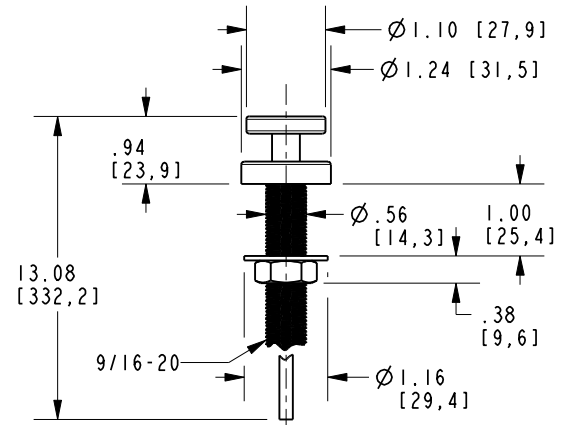
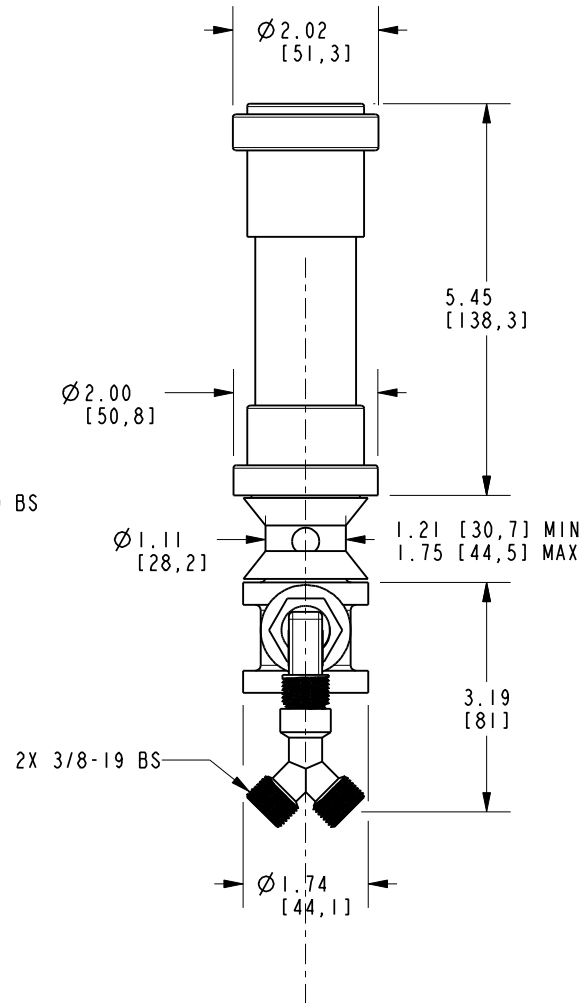
DRAWN	CHECKED	APPROVED
JINSON 01/05/18	J.A. 01/05/18	J.A. 01/05/18

DWG NO. 2489	REV B
SCALE .175	REF. -
SHEET 1	OF 3





ELBOW
3/8-19 BS
X 3/8



BRASSTECH		2001 E. CARNEGIE AVE. SANTA ANA, CA 92705 (949) 417-5207	
DWG NO.	2489	REV B	
SCALE .375	REF. -	SHEET 3 OF 3	