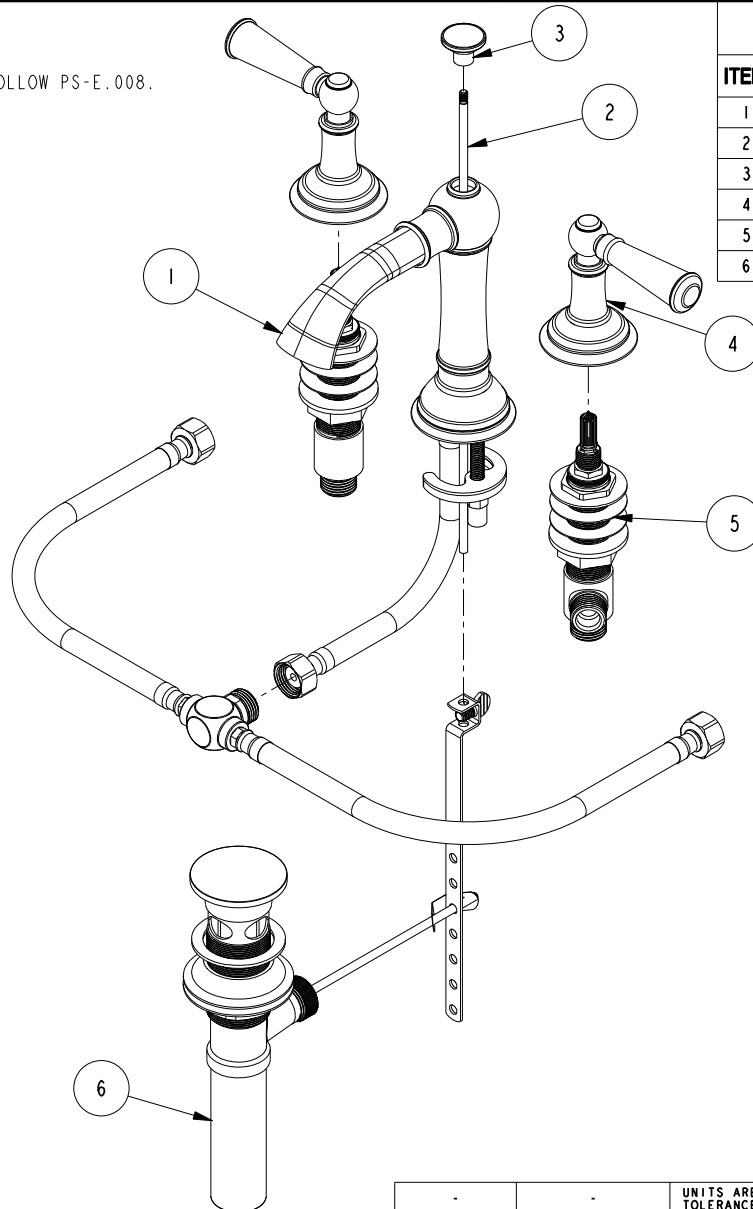


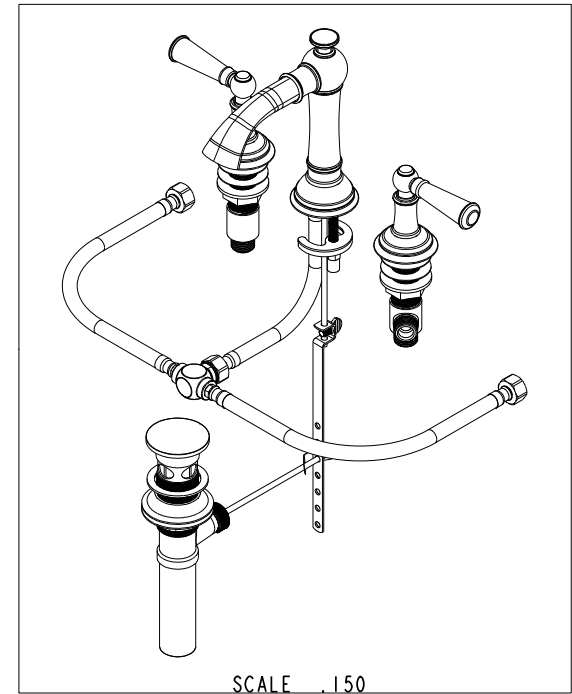
NOTES:

1. FIT / FORM / FUNCTION SHALL FOLLOW PS-E.008.



BILL OF MATERIAL (CURRENT LEVEL)

| ITEM | PT/ASSY    | DESCRIPTION               | TYPE     | QTY. |
|------|------------|---------------------------|----------|------|
| 1    | 2-767      | W/S SPOUT ASM             | ASSEMBLY | 1    |
| 2    | 10288      | 3/16" POP UP ROD          | PART     | 1    |
| 3    | 11583      | POP-UP KNOB               | PART     | 1    |
| 4    | 3-373      | LEVER HANDLE AND ESC. ASM | ASSEMBLY | 2    |
| 5    | 1-525_2400 | W/S VALVE ASM             | ASSEMBLY | 1    |
| 6    | 325        | POP UP ASSEMBLY           | ASSEMBLY | 1    |



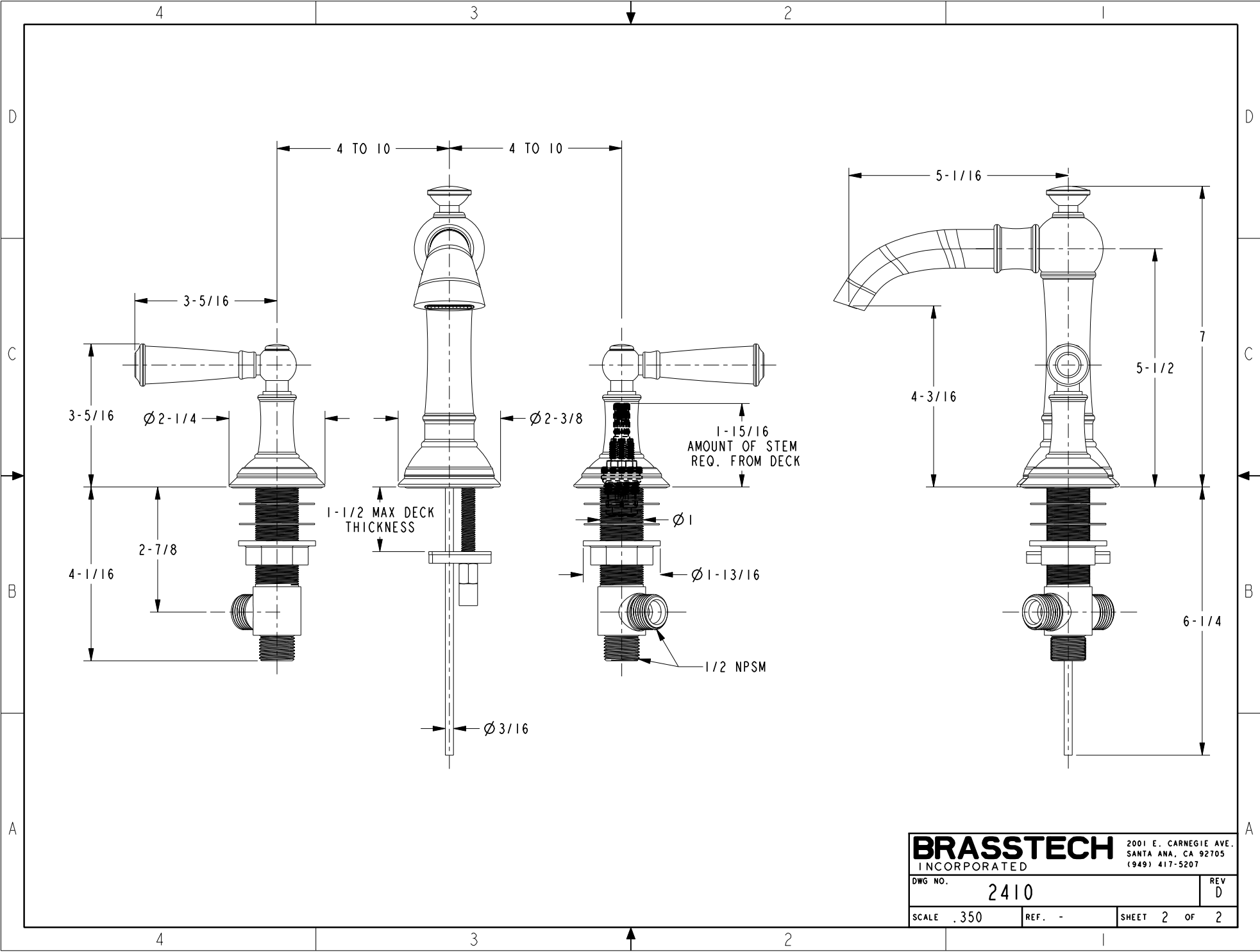
| ZONE | REV | DESCRIPTION | DATE     | APPROVED |
|------|-----|-------------|----------|----------|
| -    | D   | EN-3764     | 12/07/18 | J.M.     |
| -    | C   | EN-2120     | 04/05/12 | -        |
| -    | B   | EN-1844     | 09/01/11 | -        |
| -    | A   | EN-1616     | 09/13/10 | -        |
| -    | -   | EN-1266     | 05/05/10 | -        |

COPYRIGHT 2005 BRASSTECH, INC. THESE DRAWINGS AND THE DESIGNS DEPICTED HEREIN ARE THE PROPRIETARY PROPERTY OF BRASSTECH. ANY USE OR REPRODUCTION IS SUBJECT TO THE EXPRESS APPROVAL OF BRASSTECH. UNAUTHORIZED USE IS STRICTLY PROHIBITED. ALL RIGHTS RESERVED.

| TESTING | ASSEMBLY | PLATING | POLISHING | MACHINING | TOOLING | FIXTURE # | APPLICATION                      |
|---------|----------|---------|-----------|-----------|---------|-----------|----------------------------------|
| -       | -        | -       | -         | -         | -       | -         | REMOVE ALL BURRS AND SHARP EDGES |
| -       | -        | -       | -         | -         | -       | -         | REMOVE ALL BURRS AND SHARP EDGES |

UNITS ARE: INCHES [MM]  
 TOLERANCES ARE:  
 FRACTIONS DECIMALS ANGLES  
 $\pm 1/16"$   $.X \pm .1$  [2,5]  $\pm 1^\circ$   
 $.XX \pm .06$  [1,5]  
 (X.XXX) DENOTES CRITICAL DIMS.  
 ALL THREADS ARE CRITICAL  
 DRAWN ANDY NGUYEN 04/05/12  
 CHECKED - 05/05/10  
 APPROVED - 05/05/10

**BRASSTECH** 2001 CARNEGIE AVE. SANTA ANA, CA 92705 (949) 417-5207  
 INCORPORATED  
**W/S LAVATORY FAUCET**  
 DWG NO. **2410** REV D  
 SCALE .230 REF. - SHEET 1 OF 2



|                  |      |                       |        |
|------------------|------|-----------------------|--------|
| <b>BRASSTECH</b> |      | 2001 E. CARNEGIE AVE. |        |
| INCORPORATED     |      | SANTA ANA, CA 92705   |        |
|                  |      | (949) 417-5207        |        |
| DWG NO.          | 2410 | REV                   | D      |
| SCALE            | .350 | REF.                  | -      |
|                  |      | SHEET                 | 2 OF 2 |