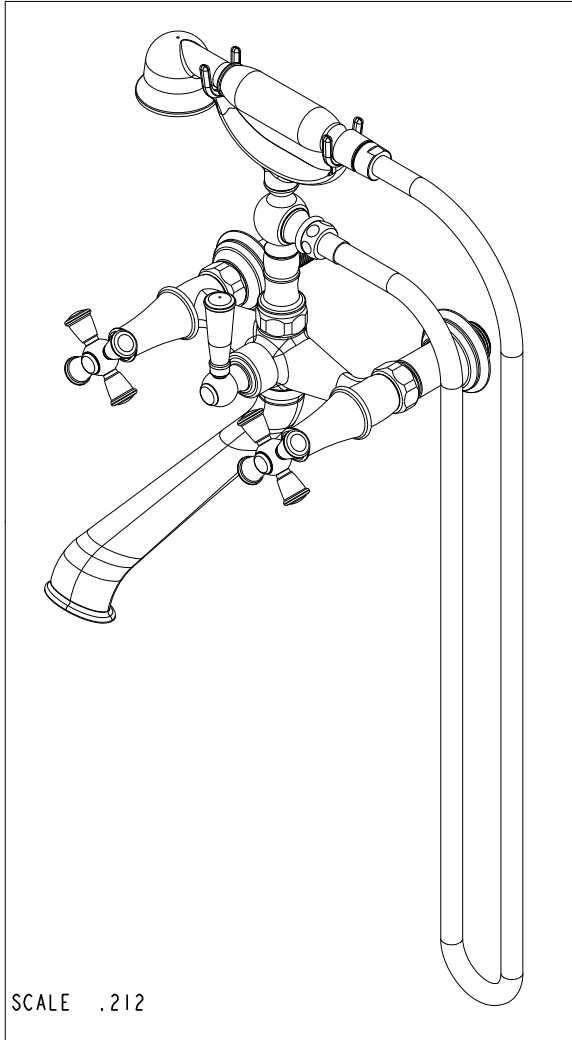


NOTES:

(N1) 1. FIT / FORM / FUNCTION SHALL FOLLOW PS-E.008.



SCALE .212

BILL OF MATERIAL (CURRENT LEVEL)

ITEM	PT/ASSY	DESCRIPTION	TYPE	QTY.
1	10326	BODY - FOR 933,934	PART	1
2	2-220	RISER ASM	ASSEMBLY	1
3	10442	SEAT FOR CARTRIDGE	PART	2
4	91039	WSHR, .625 ID X 1.00 OD X .125 THK, RUBBER	PART	2
5	1-325	W/S CARTRIDGE FRICTION - COLD	PART	1
6	1-326	W/S CARTRIDGE FRICTION - HOT	PART	1
7	12066	HANDLE BONNET - TUB FILLER	PART	2
8	12062	ADAPTER - 20-T X 16-T	PART	2
9	12458	NIPPLE 3/4 X 2.8"	PART	2
10	281	HANDSHOWER ASM	ASSEMBLY	1
11	284	59 IN. SPIRAL SHOWER HOSE	ASSEMBLY	1
12	12585	SPOUT	PART	1
13	91028	O-RING, #2- 113, EPDM, 65-75 DURO, NSF 61	PART	1
14	1-076	CARTRIDGE DIVERTER ASM	ASSEMBLY	1
15	1-048	DIVERTER STOPPER ASM	ASSEMBLY	1
16	2-848	C/S HANDLE BAR ASM	ASSEMBLY	1
17	91020	O-RING, #2-016, EPDM, 65-75 DURO, NSF 61	PART	2
18	10332	HEX NUT	PART	2
19	2-934	FLANGE ASM	ASSEMBLY	2
20	2-949	CROSS HANDLE ASSY	ASSEMBLY	2
21	92538	SCRW, M4 X 25 SKT BUTTON FLANGE HD CAP BLACK-OXIDE	PART	2
22	10159	HEX KEY, 3/32 ALLOY STEEL	PART	1

TESTING	-	-	-	UNITS ARE: INCHES [MM] TOLERANCES ARE: FRACTIONS DECIMALS ANGLES ±1/16" .X ±.1 [2,5] ±1° .XX ±.06 [1,3]
ASSEMBLY	-	-	-	(X.XXX) DENOTES CRITICAL DIMS. ALL THREADS ARE CRITICAL
PLATING	-	-	-	
POLISHING	-	NEXT ASSY	USED ON	
MACHINING	-	APPLICATION		CHECKED - -
TOOLING FIXTURE #	REMOVE ALL BURRS AND SHARP EDGES		APPROVED - -	

**BRASSTECH** 2001 CARNEGIE AVE.  
SANTA ANA, CA 92705  
(949) 417-5207  
INCORPORATED

EXPOSED TUB/ HANDSHOWER,  
WALL MOUNT - CROSS HANDLE

DWG NO. 2400-4282 REV C

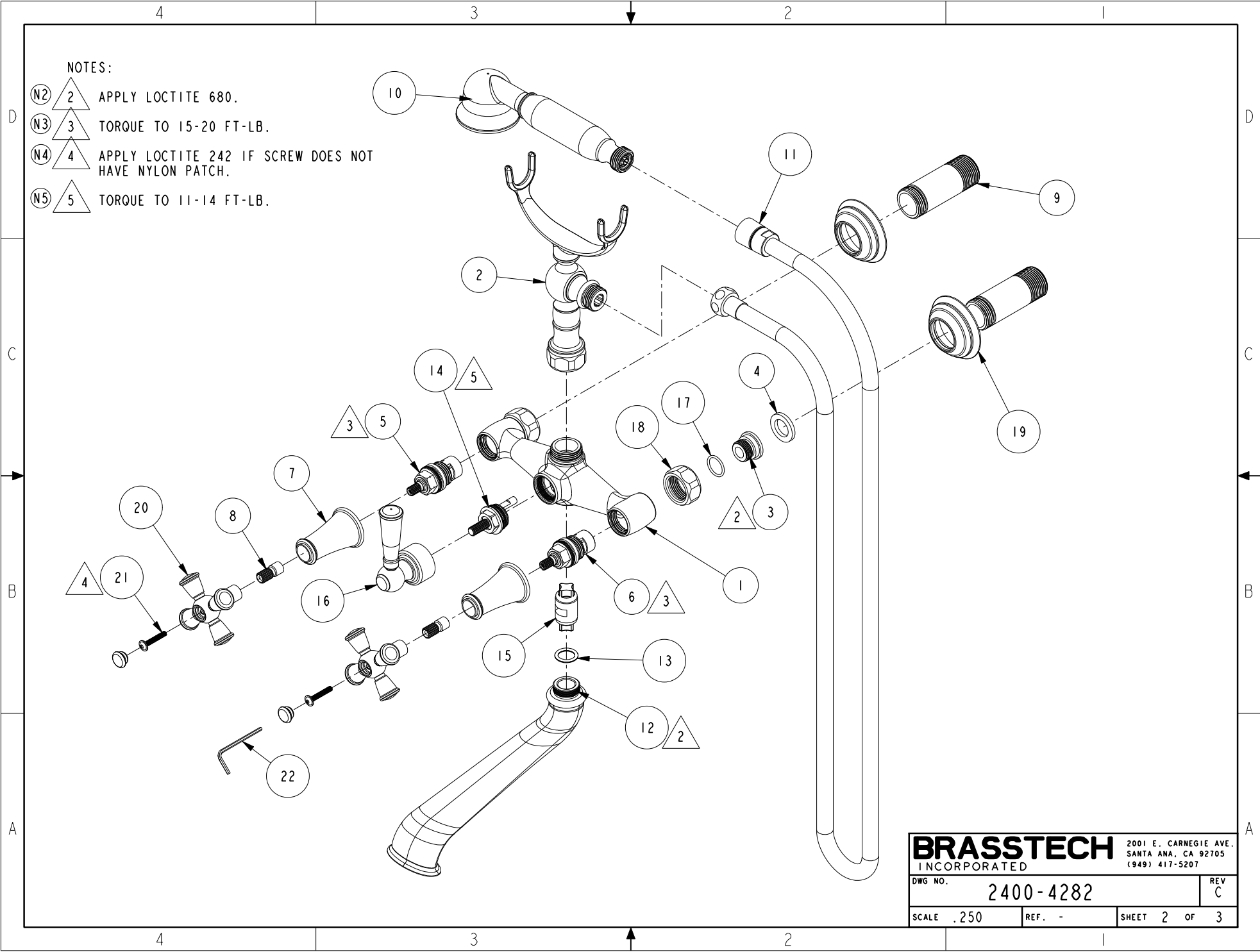
SCALE .212 REF. - SHEET 1 OF 3

-	C	EN-3150a	05/18/17	J.M.
-	B	EN-2947a	09/15/16	J.M.
-	A	EN-2818	11/20/14	-
-	-	EN-2606	04/14/14	-
ZONE	REV	DESCRIPTION	DATE	APPROVED

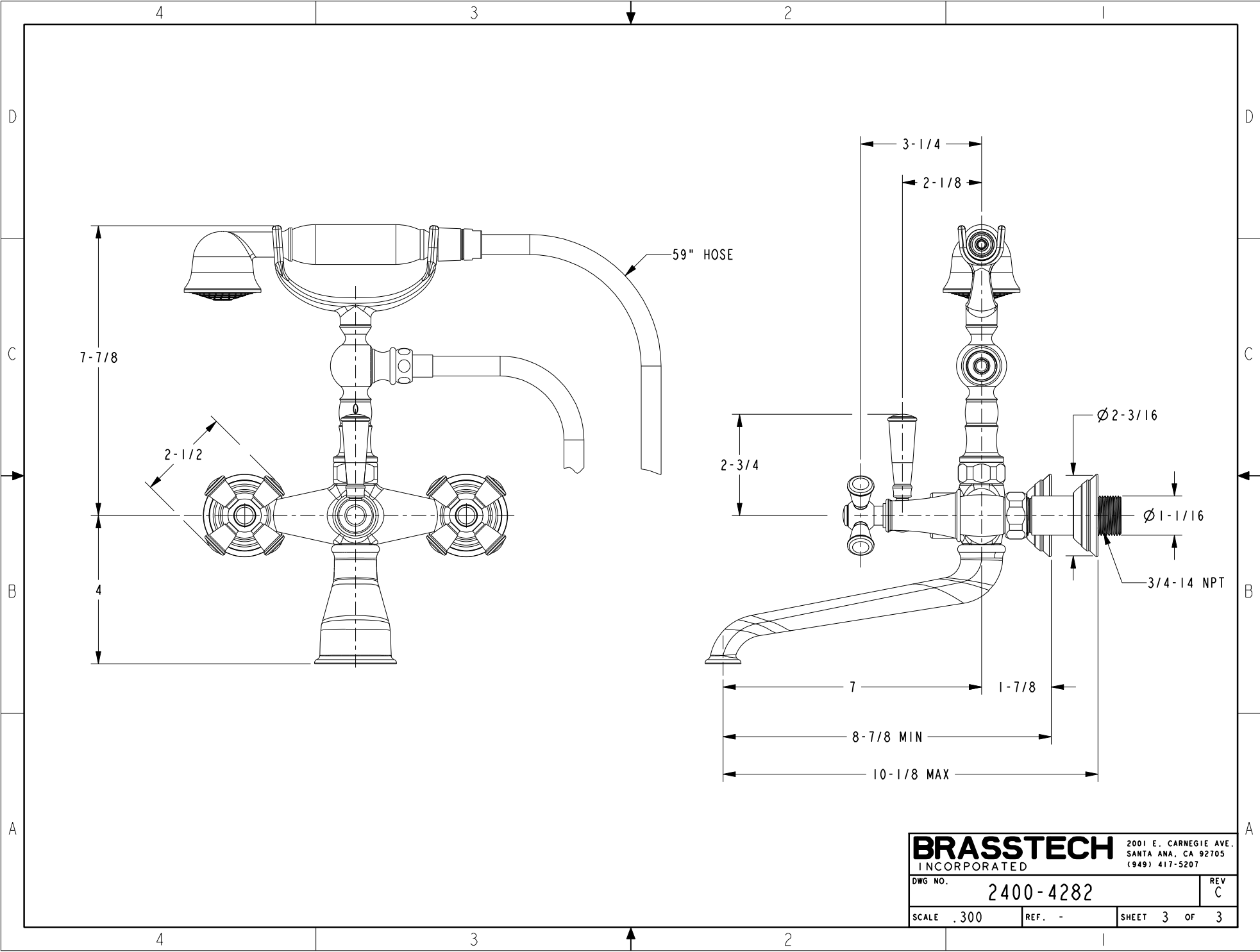
COPYRIGHT 2005 BRASSTECH, INC.  
THESE DRAWINGS AND THE DESIGNS  
DEPICTED HEREIN ARE THE PROPRIETARY  
PROPERTY OF BRASSTECH. ANY USE  
OR REPRODUCTION IS SUBJECT TO  
THE EXPRESS APPROVAL OF BRASSTECH.  
UNAUTHORIZED USE IS STRICTLY  
PROHIBITED. ALL RIGHTS RESERVED.

NOTES:

- (N2)  $\triangle 2$  APPLY LOCTITE 680.
- (N3)  $\triangle 3$  TORQUE TO 15-20 FT-LB.
- (N4)  $\triangle 4$  APPLY LOCTITE 242 IF SCREW DOES NOT HAVE NYLON PATCH.
- (N5)  $\triangle 5$  TORQUE TO 11-14 FT-LB.



<b>BRASSTECH</b>		2001 E. CARNEGIE AVE.
INCORPORATED		SANTA ANA, CA 92705
		(949) 417-5207
DWG NO.	2400-4282	REV C
SCALE .250	REF. -	SHEET 2 OF 3



<b>BRASSTECH</b>		2001 E. CARNEGIE AVE. SANTA ANA, CA 92705 (949) 417-5207	
INCORPORATED			
DWG NO.	2400-4282	REV	C
SCALE	.300	REF.	-
		SHEET	3 OF 3