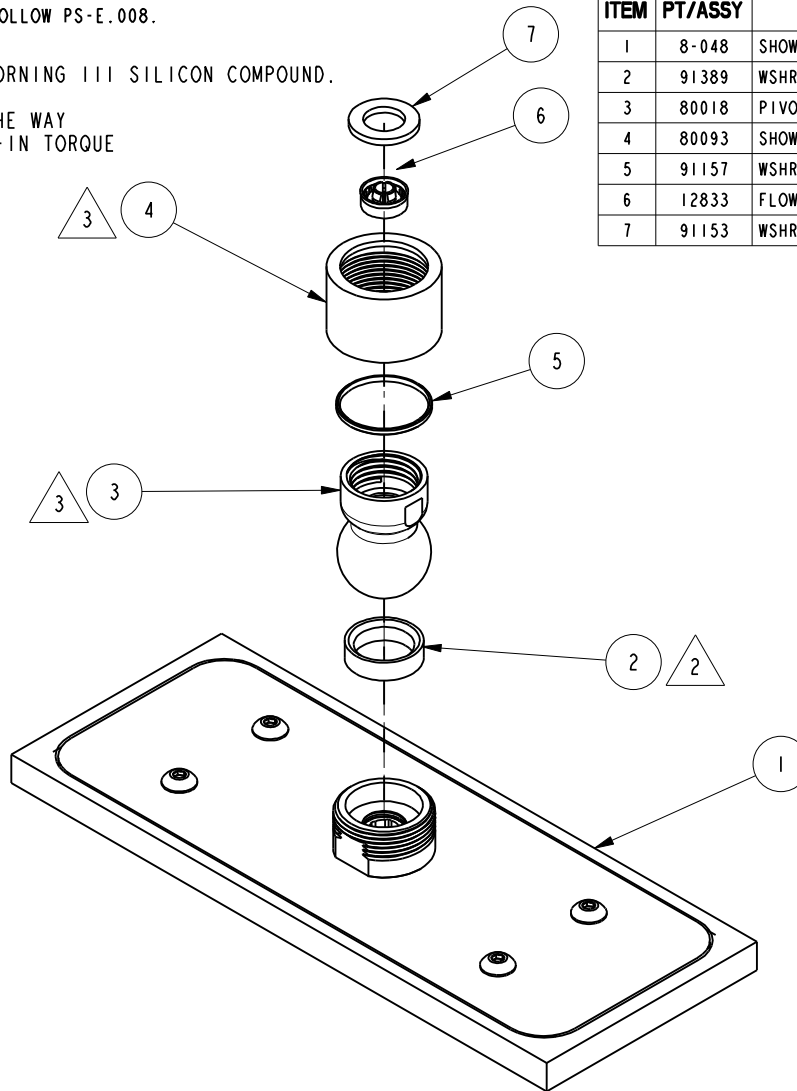


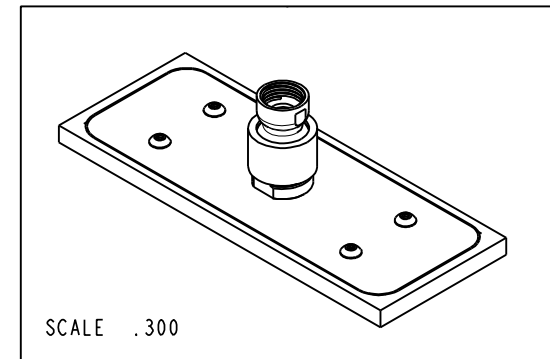
NOTES:

- (N1) 1. FIT / FORM / FUNCTION SHALL FOLLOW PS-E.008.
- 2. APPLY LIGHT FILM OF DOW CORNING 111 SILICON COMPOUND.
- (N3) 3. TIGHTEN THE NUT 80093 IN THE WAY THAT IT WILL TAKE 20-25 LB-IN TORQUE TO MOVE THE PIVOT BALL.



BILL OF MATERIAL (CURRENT LEVEL)

ITEM	PT/ASSY	DESCRIPTION	TYPE	QTY.
1	8-048	SHOWER HEAD ASM	ASSEMBLY	1
2	91389	WSHR, .630 ID X .823 OD X .228 THK, CONCAVE, RUBBER	PART	1
3	80018	PIVOT BALL	PART	1
4	80093	SHOWER COLLAR NUT	PART	1
5	91157	WSHR, .920 ID X 1.0 OD X .066 THK, FLT, NYLON	PART	1
6	12833	FLOW REGULATOR, 1.8 GPM MAX	PART	1
7	91153	WSHR .438 X .738	PART	1



ZONE	REV	DESCRIPTION	DATE	APPROVED
-	A	EN-3410	12/30/17	C.G.
-	-	EN-1735	06/10/11	-

COPYRIGHT 2005 BRASSTECH, INC. THESE DRAWINGS AND THE DESIGNS DEPICTED HEREIN ARE THE PROPRIETARY PROPERTY OF BRASSTECH. ANY USE OR REPRODUCTION IS SUBJECT TO THE EXPRESS APPROVAL OF BRASSTECH. UNAUTHORIZED USE IS STRICTLY PROHIBITED. ALL RIGHTS RESERVED.

TESTING	ASSEMBLY	PLATING	POLISHING	MACHINING	TOOLING FIXTURE #	APPLICATION
-	-	-	-	-	-	REMOVE ALL BURRS AND SHARP EDGES

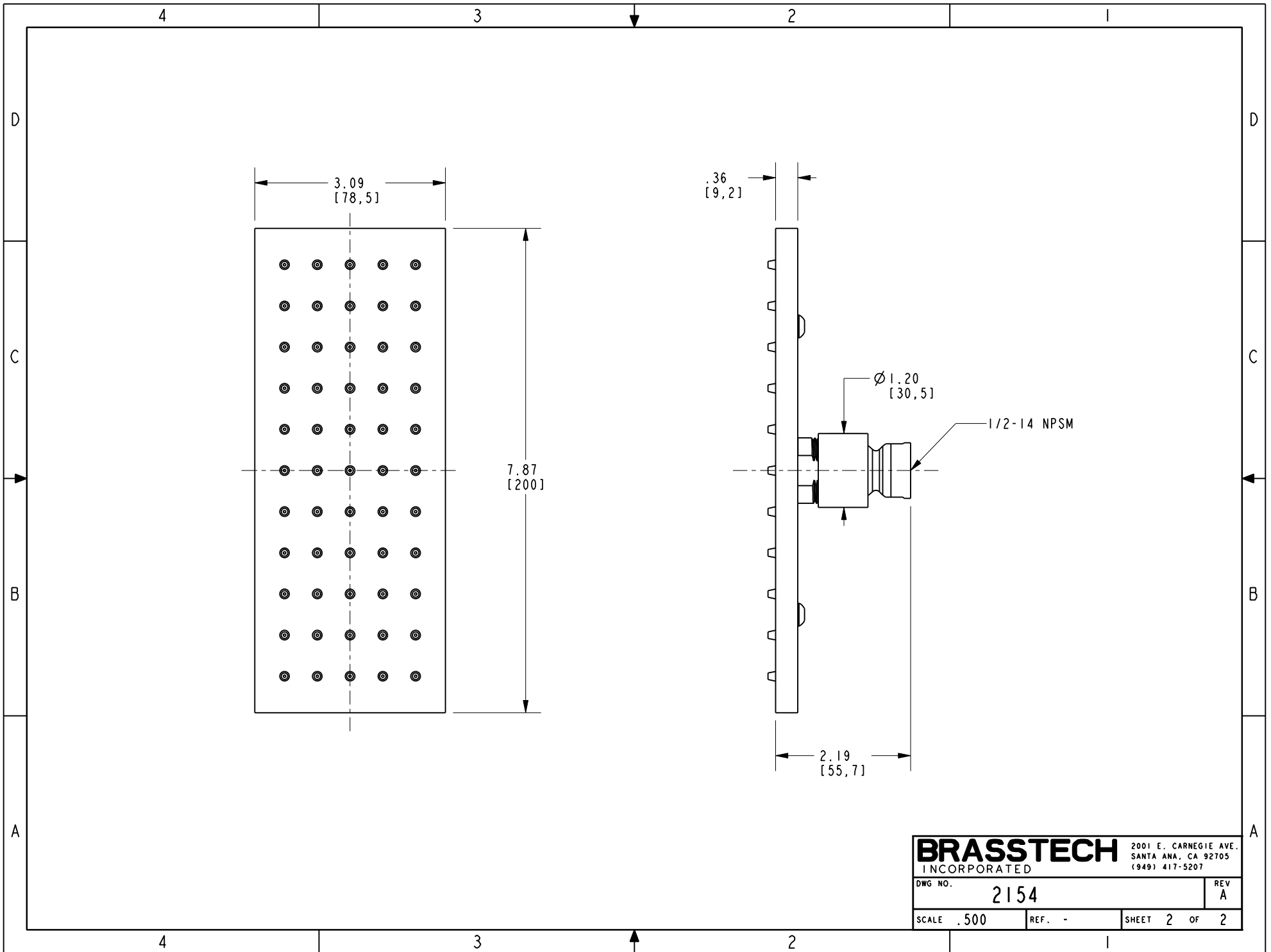
UNITS ARE: INCHES [MM]	
TOLERANCES ARE:	
FRACTIONS DECIMALS	ANGLES
±1/16"	±1°
.X ±.1 [2.5]	
.XX ±.06 [1.5]	
(X.XXX) DENOTES CRITICAL DIMS. ALL THREADS ARE CRITICAL	
DRAWN	JINSON 12/30/17
CHECKED	C.G. 12/30/17
APPROVED	C.G. 12/30/17

**BRASSTECH** 2001 CARNEGIE AVE. SANTA ANA, CA 92705 (949) 417-5207  
 INCORPORATED

**SINGLE FUNCTION SHOWER HEAD - RECTANGULAR**

DWG NO. **2154** REV **A**

SCALE .500 REF. - SHEET 1 OF 2



<b>BRASSTECH</b>		2001 E. CARNEGIE AVE.	
INCORPORATED		SANTA ANA, CA 92705	
DWG NO. 2154		REV A	
SCALE .500	REF. -	SHEET 2 OF 2	