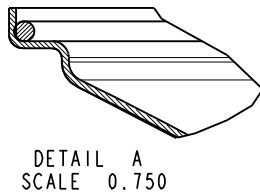
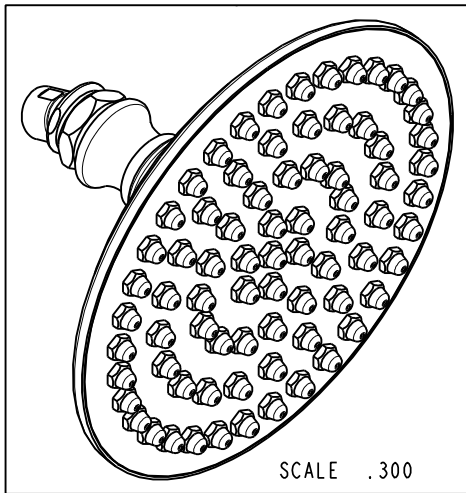
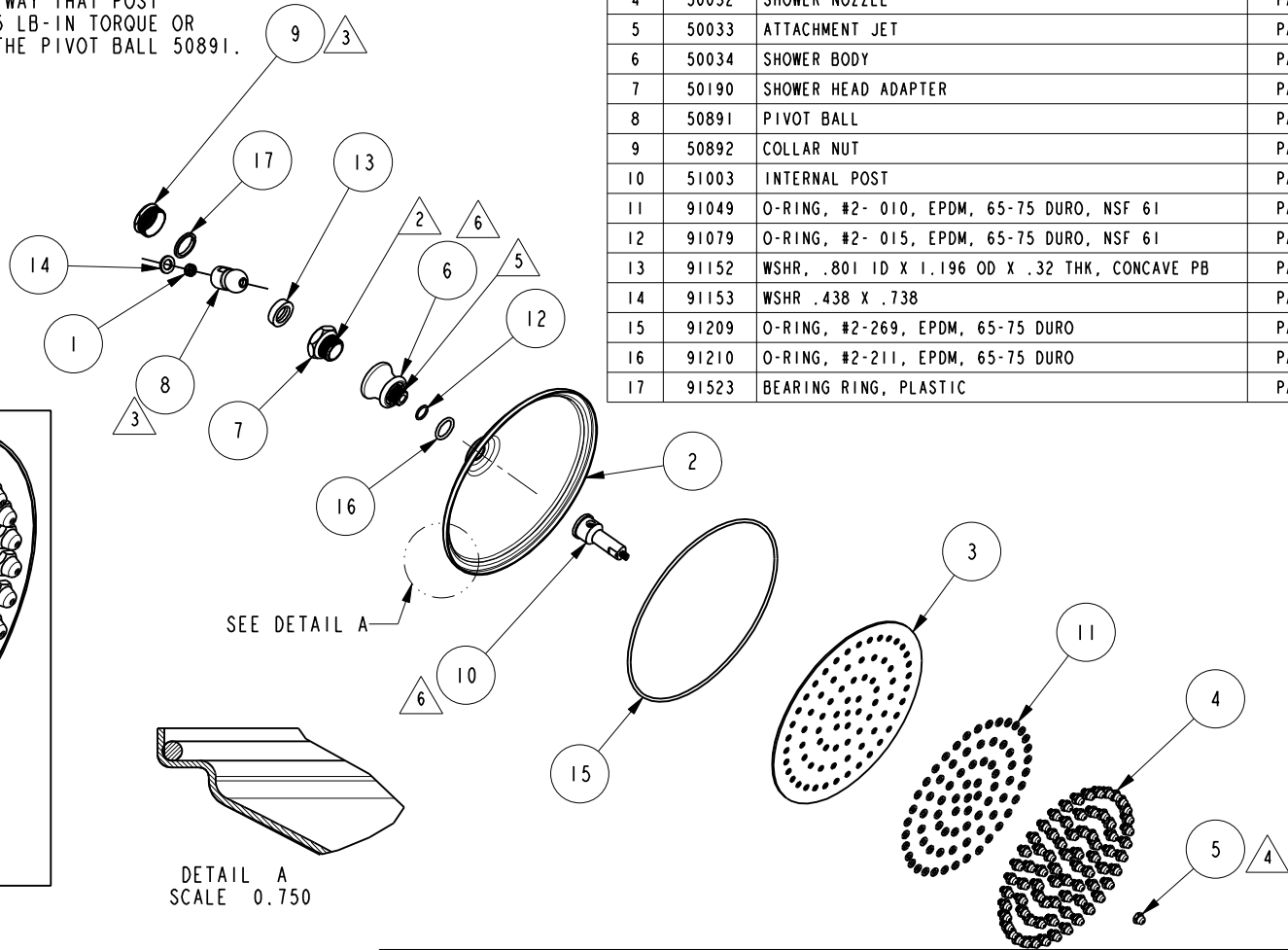


NOTES:

- (N1) 1. FIT / FORM / FUNCTION SHALL FOLLOW PS-E.008.
- △ 2. APPLY A MINIMUM OF THREE LAYERS OF TEFLON TAPE.
- (N3) 3. TIGHTEN THE NUT 50892 IN A WAY THAT POST ASSEMBLY IT WILL TAKE 20-25 LB-IN TORQUE OR 3 LBS FORCE AT 7" TO MOVE THE PIVOT BALL 50891.
- △ 4. TORQUE 22-25 LB-IN.
- △ 5. APPLY LOCTITE 680.
- △ 6. APPLY 20-25LB-FT TO TIGHTEN ITEMS #6 & #10

BILL OF MATERIAL (CURRENT LEVEL)

ITEM	PT/ASSY	DESCRIPTION	TYPE	QTY.
1	11914	FLOW REGULATOR, 2.0 GPM MAX	PART	1
2	50030	SHOWER BODY SHELL	PART	1
3	50031	SHOWER HEAD FACE PLATE	PART	1
4	50032	SHOWER NOZZLE	PART	75
5	50033	ATTACHMENT JET	PART	1
6	50034	SHOWER BODY	PART	1
7	50190	SHOWER HEAD ADAPTER	PART	1
8	50891	PIVOT BALL	PART	1
9	50892	COLLAR NUT	PART	1
10	51003	INTERNAL POST	PART	1
11	91049	O-RING, #2- 010, EPDM, 65-75 DURO, NSF 61	PART	76
12	91079	O-RING, #2- 015, EPDM, 65-75 DURO, NSF 61	PART	1
13	91152	WSHR, .801 ID X 1.196 OD X .32 THK, CONCAVE PB	PART	1
14	91153	WSHR .438 X .738	PART	1
15	91209	O-RING, #2-269, EPDM, 65-75 DURO	PART	1
16	91210	O-RING, #2-211, EPDM, 65-75 DURO	PART	1
17	91523	BEARING RING, PLASTIC	PART	1



REV	DESCRIPTION	DATE	APPROVED
- H	EN-3466	11/15/17	J.M.
- G	EN-3004	02/01/16	J.M.
- F	EN-2690	01/20/14	-
- E	EN-1668C	05/24/11	-

COPYRIGHT 2005 BRASSTECH, INC. THESE DRAWINGS AND THE DESIGNS DEPICTED HEREIN ARE THE PROPRIETARY PROPERTY OF BRASSTECH. ANY USE OR REPRODUCTION IS SUBJECT TO THE EXPRESS APPROVAL OF BRASSTECH. UNAUTHORIZED USE IS STRICTLY PROHIBITED. ALL RIGHTS RESERVED.

TESTING	ASSEMBLY	PLATING	POLISHING	MACHINING
-	-	-	-	-
NEXT ASSY				USED ON
APPLICATION				
REMOVE ALL BURRS AND SHARP EDGES				

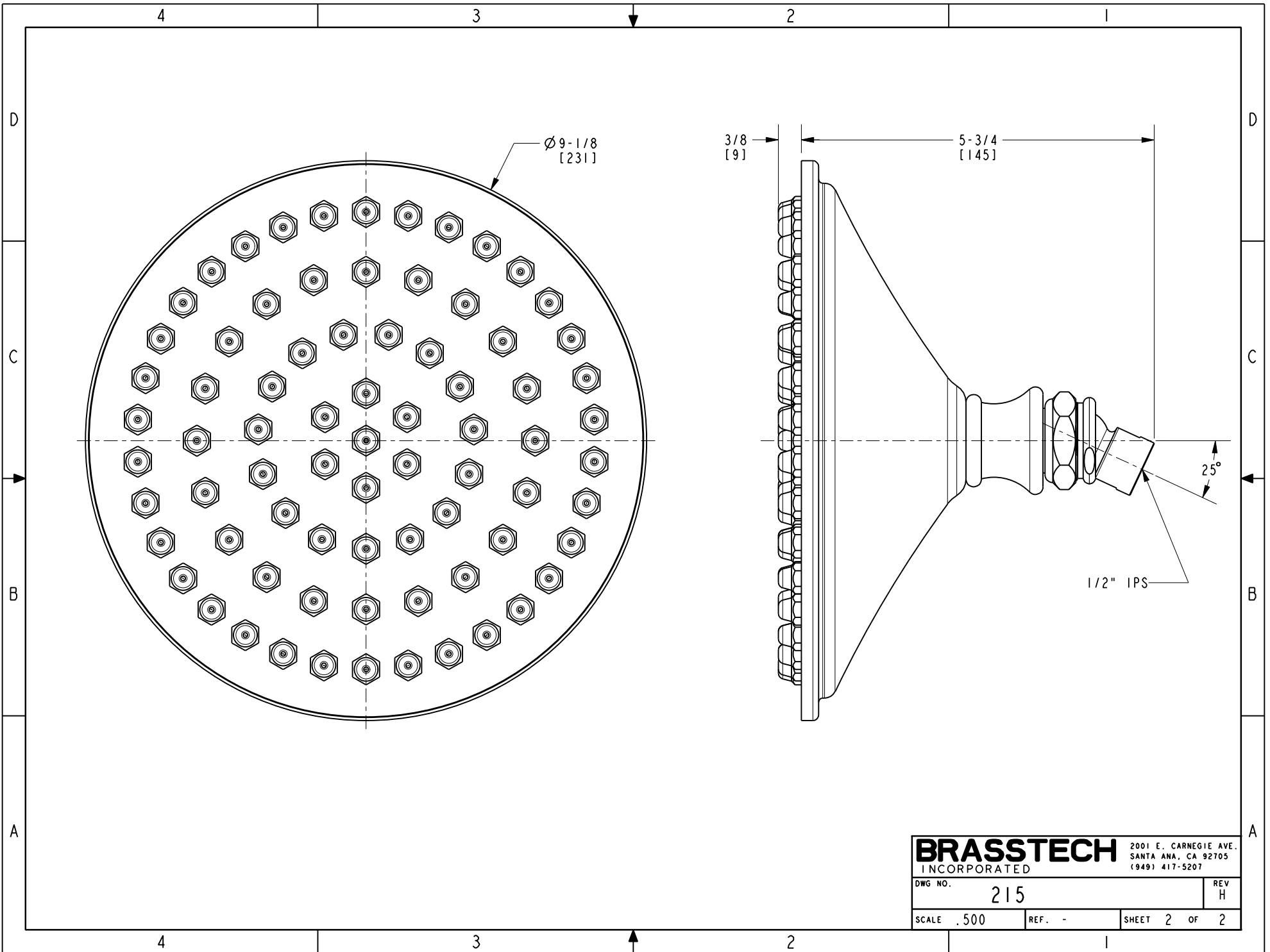
UNITS ARE: INCHES [MM]	
TOLERANCES ARE:	
FRACTIONS DECIMALS	ANGLES
±1/16"	±1°
.X ±.1 [2.5]	
.XX ±.06 [1.5]	
(X.XXX) DENOTES CRITICAL DIMS. ALL THREADS ARE CRITICAL	
DRAWN	JINSON 11/15/17
CHECKED	J.M. 11/15/17
APPROVED	J.M. 11/15/17

BRASSTECH 2001 CARNEGIE AVE. SANTA ANA, CA 92705 (949) 417-5207
INCORPORATED

SHOWERHEAD 9 IN. DIA

DWG NO. 215 REV H

SCALE .125 REF. - SHEET 1 OF 2



BRASSTECH		2001 E. CARNEGIE AVE.	
INCORPORATED		SANTA ANA, CA 92705	
DWG NO. 215		REV H	
SCALE .500	REF. -	SHEET 2 OF 2	