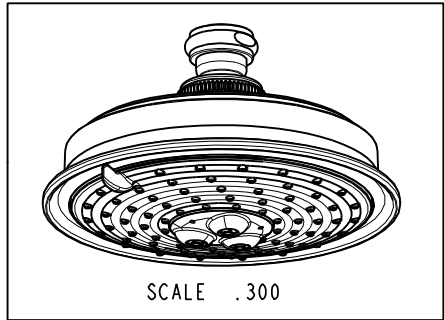


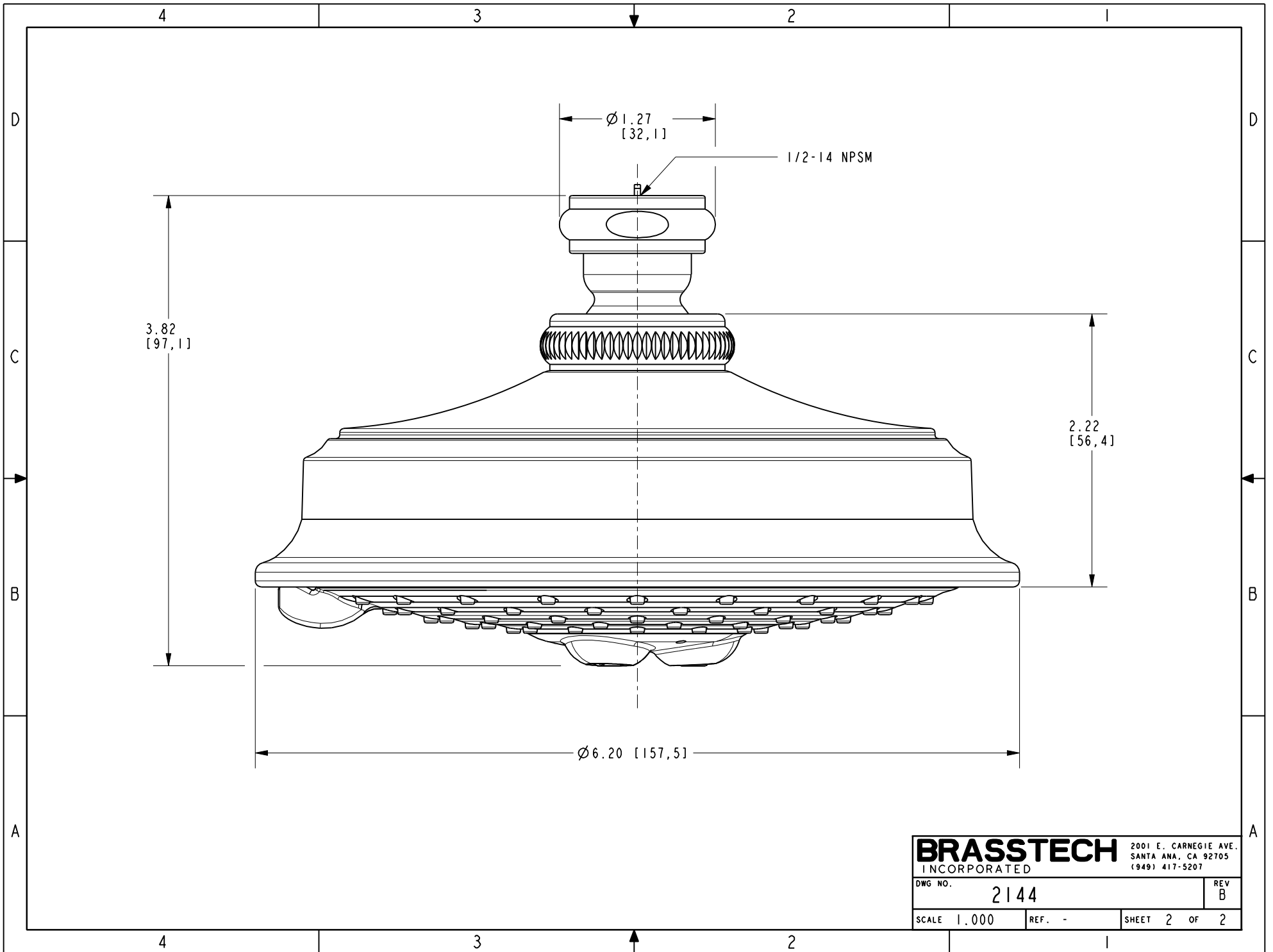
BILL OF MATERIAL (CURRENT LEVEL)

ITEM	PT/ASSY	DESCRIPTION	TYPE	QTY.
1	8-066	SHOWER ENGINE, 5-JET	ASSEMBLY	1
2	80152	SHOWER HEAD NUT	PART	1
3	80144	SHOWERHEAD SHELL	PART	1
4	80150	PIVOT BALL	PART	1
5	91157	WSHR, .920 ID X 1.0 OD X .066 THK, FLT, NYLON	PART	1
6	80151	SHOWER SPOUT NUT	PART	1
7	50187	WSHR RBR W/ DIFFUSER	PART	1
8	12833	FLOW REGULATOR, 1.8 GPM MAX	PART	1

- NOTES:
- (NI) 1. FIT / FORM / FUNCTION SHALL FOLLOW PS-E.008.
 - 2. APPLY LOCTITE 680.
 - 3. APPLY 3M SCOTCH-WELD DP-100NS OR EQUIVALENT.
 - (N4) 4. TIGHTEN THE NUT 80152 IN THE WAY THAT IT WILL TAKE 20-25 LB-IN TORQUE TO MOVE THE PIVOT BALL.
 - 5. APPLY THIN FILM OF DOW CORNING III.



-	B	EN-3410	12/30/17	C.G.	COPYRIGHT 2005 BRASSTECH, INC. THESE DRAWINGS AND THE DESIGNS DEPICTED HEREIN ARE THE PROPRIETARY PROPERTY OF BRASSTECH. ANY USE OR REPRODUCTION IS SUBJECT TO THE EXPRESS APPROVAL OF BRASSTECH. UNAUTHORIZED USE IS STRICTLY PROHIBITED. ALL RIGHTS RESERVED.	TESTING	-	-	-	UNITS ARE: INCHES [MM]	BRASSTECH INCORPORATED 2001 CARNEGIE AVE. SANTA ANA, CA 92705 (949) 417-5207	TRAD. SHOWER HEAD - 5 JETS	DWG NO. 2144	REV B			
-	A	EN-1668	04/05/11	-		ASSEMBLY	-	-	-	TOLERANCES ARE:					SCALE .350	REF. -	SHEET 1 OF 2
-	-	EO-0894	10/18/07	-		PLATING	-	3-2524BP	3-2524BP	FRACTIONS DECIMALS ANGLES					X.XXX DENOTES CRITICAL DIMS. ALL THREADS ARE CRITICAL		
ZONE	REV	DESCRIPTION	DATE	APPROVED		MACHINING	-	APPLICATION		.X ±.1 [2,5] ±1°					DRAWN	JINSON	12/30/17
						TOOLING FIXTURE #	REMOVE ALL BURRS AND SHARP EDGES			.XX ±.06 [1,5]	CHECKED	C.G.	12/30/17				
										APPROVED	C.G.	12/30/17					



BRASSTECH		2001 E. CARNEGIE AVE.	
INCORPORATED		SANTA ANA, CA 92705	
DWG NO. 2144		REV B	
SCALE 1.000	REF. -	SHEET 2 OF 2	