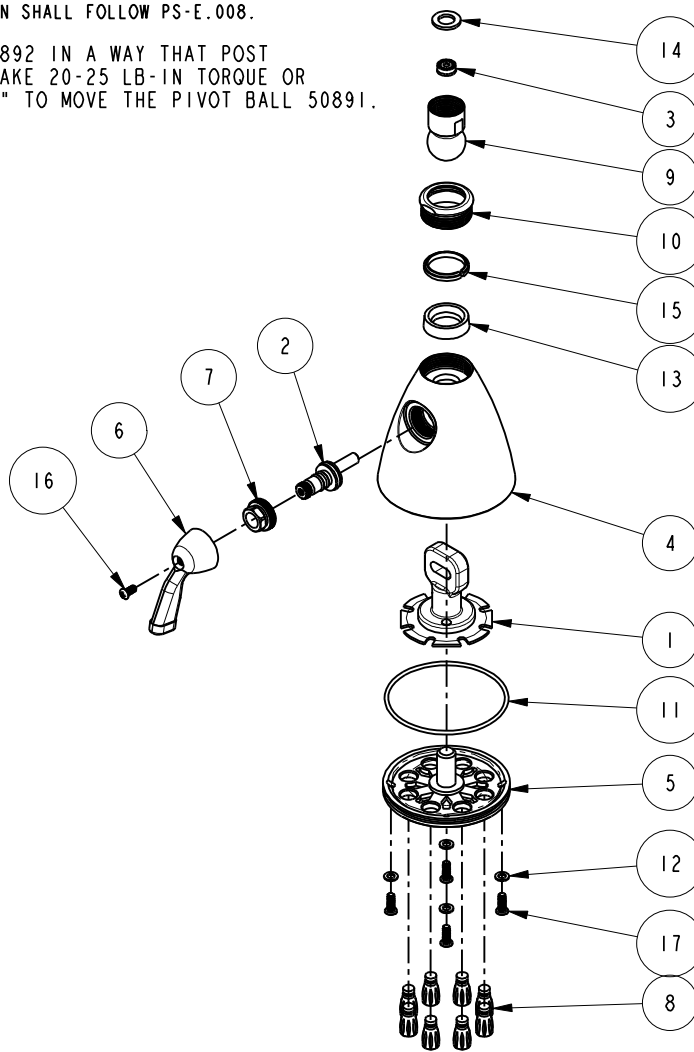


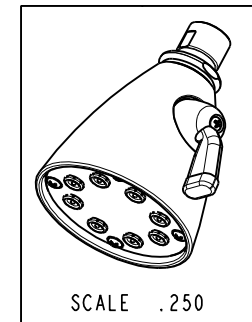
NOTES:

- (N1) 1. FIT / FORM / FUNCTION SHALL FOLLOW PS-E.008.
- (N2) 2. TIGHTEN THE NUT 50892 IN A WAY THAT POST ASSEMBLY IT WILL TAKE 20-25 LB-IN TORQUE OR 2-3 LBS FORCE AT 7" TO MOVE THE PIVOT BALL 50891.



BILL OF MATERIAL (CURRENT LEVEL)

ITEM	PT/ASSY	DESCRIPTION	TYPE	QTY.
1	5-001	SPRAY TIP MTG PLATE	ASSEMBLY	1
2	5-037	STEM ASM	ASSEMBLY	1
3	12833	FLOW REGULATOR, 1.8 GPM MAX	PART	1
4	50156	BODY SHWR HEAD	PART	1
5	50157	FACE PLATE	PART	1
6	50158	HANDLE LEVER	PART	1
7	50159	PACKING NUT	PART	1
8	50163	SPRAY TIP	PART	8
9	50891	PIVOT BALL	PART	1
10	50892	COLLAR NUT	PART	1
11	91074	O-RING, 2.5 X 77MM ID, EPDM, 65-75 DURO	PART	1
12	91147	WSHR, .202 ID X .360 OD X .04 THK, FLT, FIBER	PART	4
13	91152	WSHR, .801 ID X 1.196 OD X .32 THK, CONCAVE PB	PART	1
14	91153	WSHR .438 X .738	PART	1
15	91523	BEARING RING, PLASTIC	PART	1
16	92039	SCRW, 10-24 X 7/16 PHIL OVL HD BRASS	PART	1
17	92040	SCRW, 10-24 X 1/2 PHIL W/.320 DIA ROUND HD BRS	PART	4



ZONE	REV	DESCRIPTION	DATE	APPROVED
-	E	EN-3410	12/28/17	C.G.
-	D	EN-1924	12/02/11	-
-	C	EN-1668C	05/20/11	-
-	B	EO-0518	06/09/05	-
-	A	VENDER CHANGE	06/00	-
-	-	RELEASED	PRE '95	-

COPYRIGHT 2005 BRASSTECH, INC. THESE DRAWINGS AND THE DESIGNS DEPICTED HEREIN ARE THE PROPRIETARY PROPERTY OF BRASSTECH. ANY USE OR REPRODUCTION IS SUBJECT TO THE EXPRESS APPROVAL OF BRASSTECH. UNAUTHORIZED USE IS STRICTLY PROHIBITED. ALL RIGHTS RESERVED.

TESTING	ASSEMBLY	PLATING	POLISHING	MACHINING
-	-	-	-	-
-	-	3-1762BP	3-1762BP	-
-	-	NEXT ASSY	USED ON	-
APPLICATION				
TOOLING	FIXTURE #	REMOVE ALL BURRS AND SHARP EDGES		

UNITS ARE: INCHES [MM]
TOLERANCES ARE:
FRACTIONS DECIMALS ANGLES
±1/16" .X ±.1 [2.5] ±1°
.XX ±.06 [1.5]

(X.XXX) DENOTES CRITICAL DIMS.
ALL THREADS ARE CRITICAL

DRAWN	JINSON	12/28/17
CHECKED	C.G.	12/28/17
APPROVED	C.G.	12/28/17

BRASSTECH 2001 CARNEGIE AVE. SANTA ANA, CA 92705 (949) 417-5207
INCORPORATED

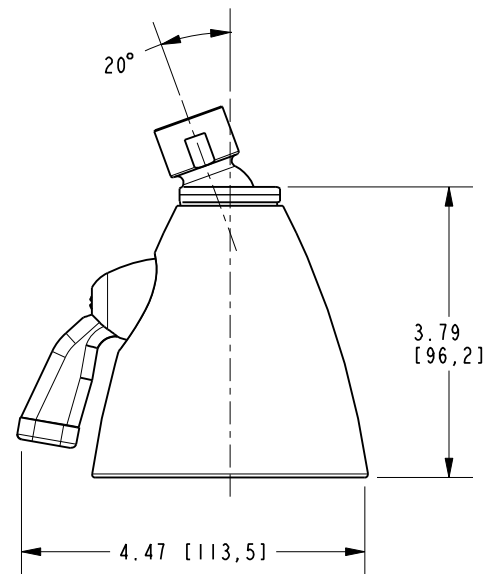
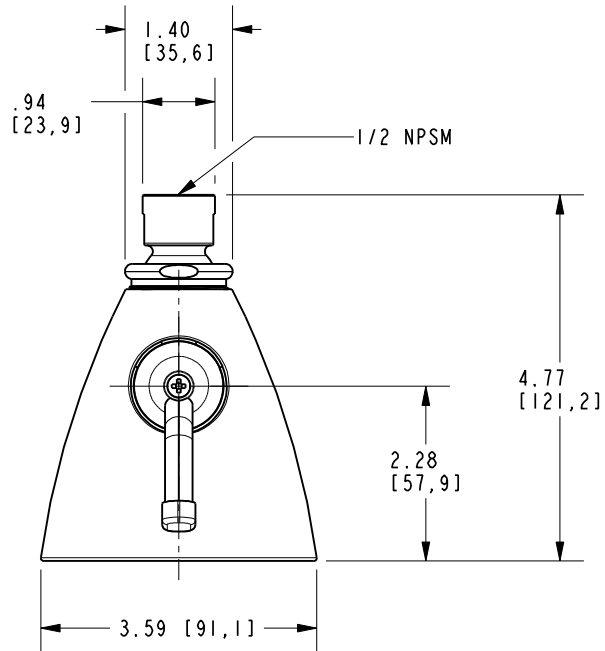
LG SHWRHEAD 3-1/2"

DWG NO. 211 REV E

SCALE .200 REF. - SHEET 1 OF 2

NOTES:

1. FLOW RATE 2.5 GPM MAX



BRASSTECH		2001 E. CARNEGIE AVE.	
INCORPORATED		SANTA ANA, CA 92705	
		(949) 417-5207	
DWG NO.	211	REF.	-
SCALE	.500	SHEET	2 OF 2
		REV	E