

4

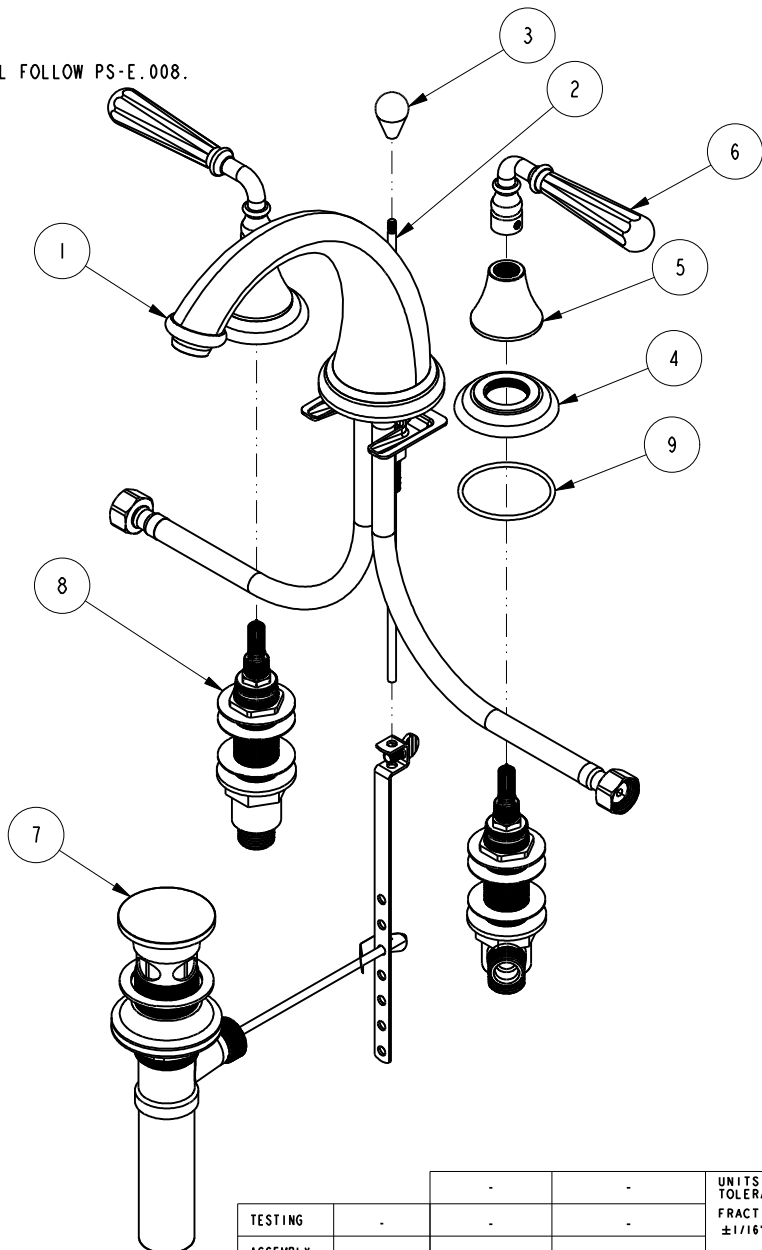
3

2

1

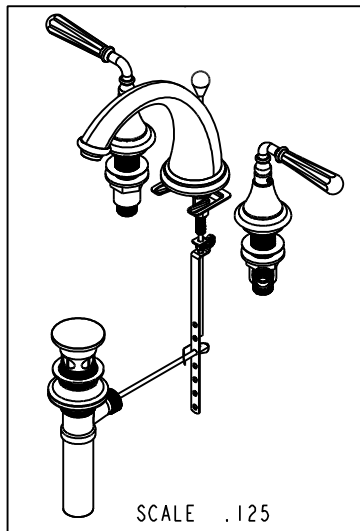
NOTES:

(N1) 1. FIT / FORM / FUNCTION SHALL FOLLOW PS-E.008.



BILL OF MATERIAL (CURRENT LEVEL)

ITEM	PT/ASSY	DESCRIPTION	TYPE	QTY.
1	3-348	W/S SPOUT ASM	ASSEMBLY	1
2	10288	3/16" POP UP ROD	PART	1
3	11181	POP-UP KNOB	PART	1
4	10048	ESCUTCHEON W/S VALVE	PART	2
5	10095	ESCUTCHEON, 900 SERIES	PART	2
6	2-470	LEVER HANDLE ASM W/8 FLATS	ASSEMBLY	2
7	325	POP UP ASSEMBLY	ASSEMBLY	1
8	1-525-1740	W/S VALVE ASM	ASSEMBLY	1
9	91231	O-RING, #2-136, EPDM, 65-75 DURO	PART	2



ZONE	REV	DESCRIPTION	DATE	APPROVED
-	D	EN-3371	08/04/17	J.M
-	C	EN-2334	12/18/12	-
-	B	EN-1616	09/13/10	-
-	A	EO-1018	06/10/08	-
-	-	EO-0390	07/16/04	-

COPYRIGHT 2005 BRASSTECH, INC. THESE DRAWINGS AND THE DESIGNS DEPICTED HEREIN ARE THE PROPRIETARY PROPERTY OF BRASSTECH. ANY USE OR REPRODUCTION IS SUBJECT TO THE EXPRESS APPROVAL OF BRASSTECH. UNAUTHORIZED USE IS STRICTLY PROHIBITED. ALL RIGHTS RESERVED.

TESTING	ASSEMBLY	PLATING	POLISHING	MACHINING	TOOLING	FIXTURE #	APPLICATION
-	-	-	-	-	-	-	REMOVE ALL BURRS AND SHARP EDGES
-	-	-	-	-	-	-	REMOVE ALL BURRS AND SHARP EDGES

UNITS ARE: INCHES [MM]	
TOLERANCES ARE:	
FRACTIONS DECIMALS	ANGLES
±1/16"	±1°
.X ±.1 [2,5]	
.XX ±.06 [1,3]	
(X.XXX) DENOTES CRITICAL DIMS. ALL THREADS ARE CRITICAL	
DRAWN	VINAY 08/04/17
CHECKED	RAVINDRA 08/04/17
APPROVED	J.M 08/04/17

BRASSTECH 2001 CARNEGIE AVE. SANTA ANA, CA 92705 (949) 417-5207
INCORPORATED

WIDESPREAD FAUCET ASM

DWG NO. 1740 REV D

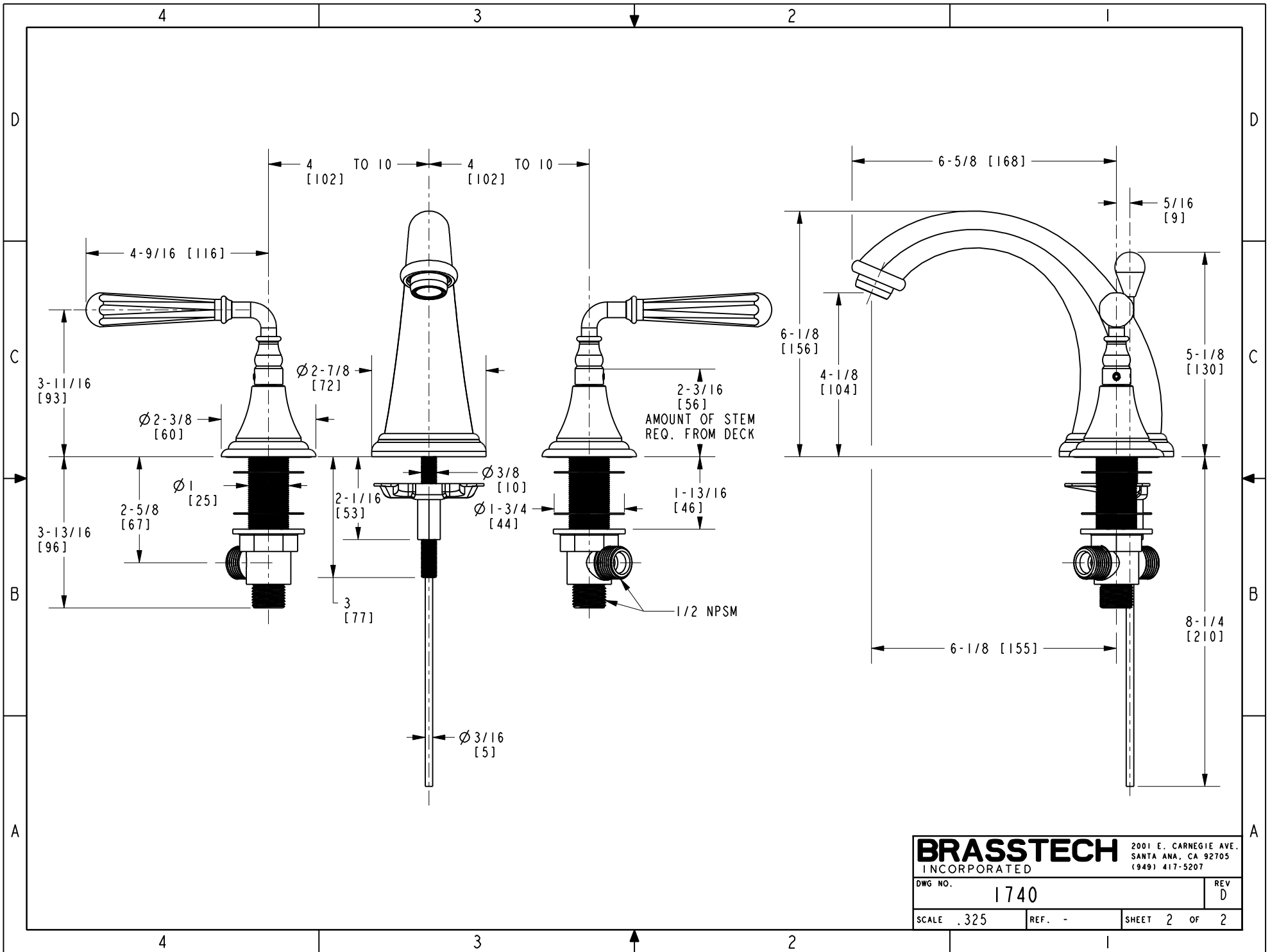
SCALE .230 REF. - SHEET 1 OF 2

4

3

2

1



BRASSTECH 2001 E. CARNEGIE AVE.
 INCORPORATED SANTA ANA, CA 92705
 (949) 417-5207

DWG NO.	1740	REV	D
SCALE	.325	REF.	-
SHEET 2		OF 2	