

AXOR Montreux
AXOR Montreux Pot Filler, Wall-Mounted
 Finishes : polished nickel Part no. : 16859831



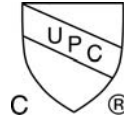
Description

Features

- Swivel range 180°
- Aerated spray
- Wall-mounted
- Flow: 2.5 GPM (9.5 L/Min)
- 90° ceramic valves
- 1/2" NPT
- Includes cross and lever handles
- California Low Lead / Section 116875 CHSC

Item details

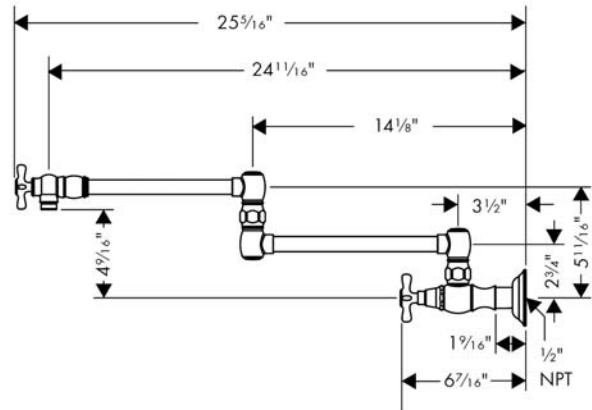
Compliance



Product image



Scale drawing

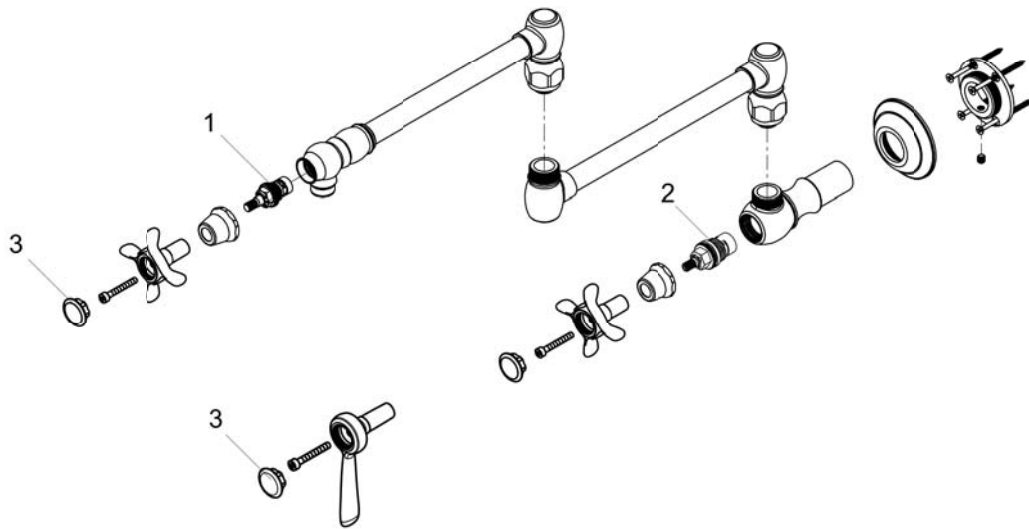


AXOR Montreux
AXOR Montreux Pot Filler, Wall-Mounted
Finishes : polished nickel Part no. : 16859831



Exploded drawing

Year of production: >01/14



AXOR Montreux
AXOR Montreux Pot Filler, Wall-Mounted
 Finishes : polished nickel Part no. : 16859831



Spare parts list

Year of production: >01/14

Pos.	Description	Part no.	Price	PU
1	shut off unit	88789000	-	1
2	shut off unit	88790000	-	1
3	set of screw covers, cold / hot water / neutral	97987000	-	1