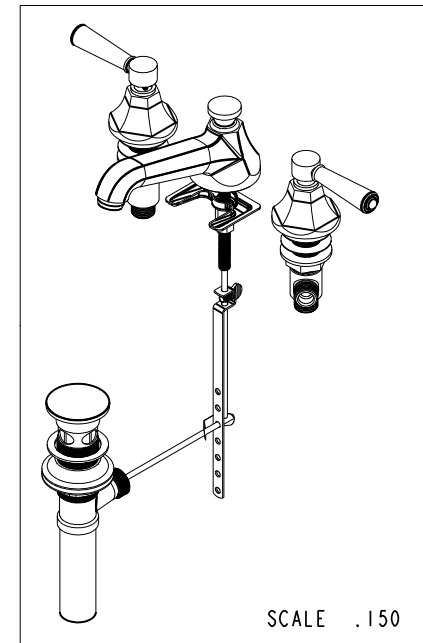
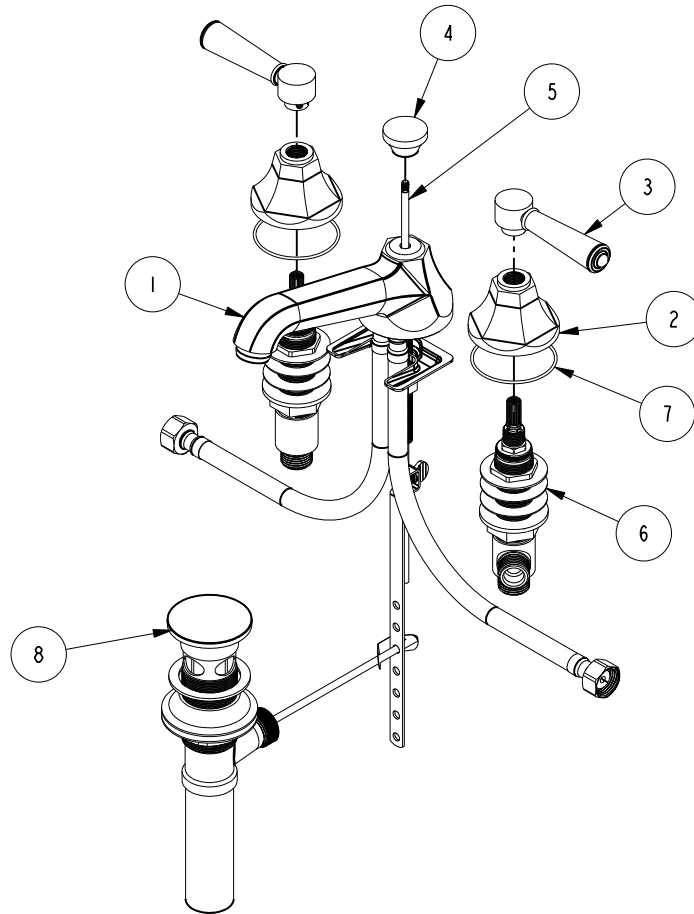


NOTES:

① 1. FIT / FORM / FUNCTION SHALL FOLLOW PS-E.008.

BILL OF MATERIAL (CURRENT LEVEL)

ITEM	PT/ASSY	DESCRIPTION	TYPE	QTY.
1	3-346	ASSY, SPOUT	ASSEMBLY	1
2	10960	HEX ESCUTCHEON	PART	2
3	2-279	TAPERED LEVER HNDL ASM	ASSEMBLY	2
4	10961	SMOOTH POP - UP KNOB	PART	1
5	10288	3/16" POP UP ROD	PART	1
6	1-525	W/S VALVE ASM	ASSEMBLY	1
7	91386	O-RING, #2-034, EPDM, 65-75 DURO	PART	2
8	325	POP UP ASSEMBLY	ASSEMBLY	1



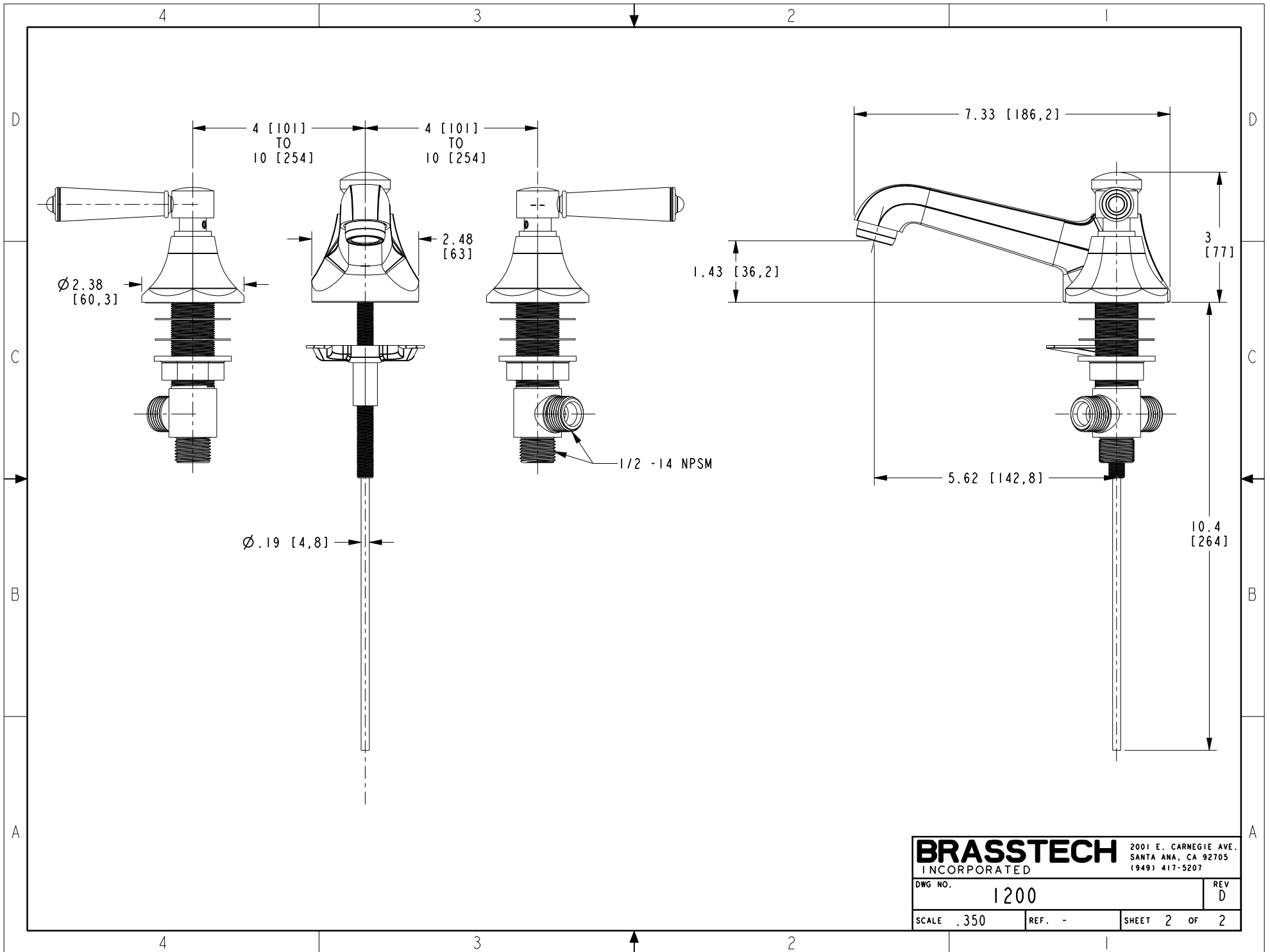
ZONE	REV	DESCRIPTION	DATE	APPROVED
-	D	EN-3371	08/04/17	J.M.
-	C	EN-2266	04/04/13	-
-	B	EN-1616	09/13/10	-
-	A	EO-1015	06/10/08	-

COPYRIGHT 2005 BRASSTECH, INC. THESE DRAWINGS AND THE DESIGNS DEPICTED HEREIN ARE THE PROPRIETARY PROPERTY OF BRASSTECH. ANY USE OR REPRODUCTION IS SUBJECT TO THE EXPRESS APPROVAL OF BRASSTECH. UNAUTHORIZED USE IS STRICTLY PROHIBITED. ALL RIGHTS RESERVED.

TESTING	-	-	-
ASSEMBLY	-	-	-
PLATING	-	-	-
POLISHING	-	NEXT ASSY	USED ON
MACHINING	-	APPLICATION	
TOOLING FIXTURE #	REMOVE ALL BURRS AND SHARP EDGES		

UNITS ARE: INCHES [MM]			
TOLERANCES ARE:			
FRACTIONS	DECIMALS	ANGLES	
$\pm 1/16"$	$.X \pm .1$ [2.5]	$\pm 1^\circ$	
	$.XX \pm .06$ [1.5]		
(X.XXX) DENOTES CRITICAL DIMS. ALL THREADS ARE CRITICAL			
DRAWN	R.S.	11/06/14	
CHECKED	J.M.	11/06/14	
APPROVED	J.M.	11/06/14	

<p>BRASSTECH INCORPORATED</p> <p>2001 CARNEGIE AVE. SANTA ANA, CA 92705 (949) 417-5207</p>		<p>WIDESPREAD FAUCET</p>	
<p>DWG NO. 1200</p>		<p>REV D</p>	
SCALE .200	REF. -	SHEET 1	OF 2



BRASSTECH		2001 E. CARNEGIE AVE.	
INCORPORATED		SANTA ANA, CA 92705	
DWG NO. 1200		REV D	
SCALE .350	REF. -	SHEET 2 OF 2	