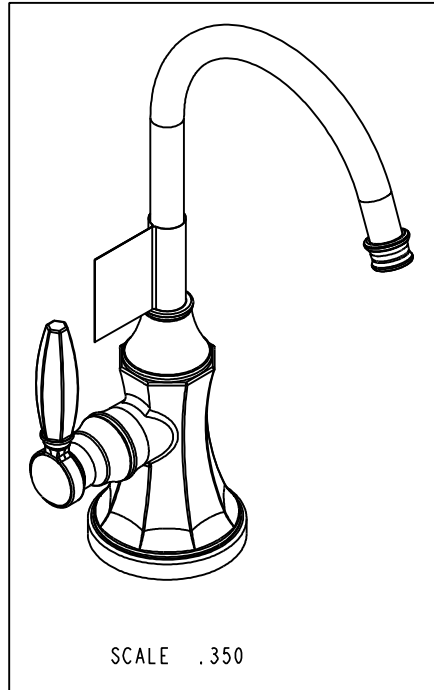


NOTES:

- (N1) 1. FIT / FORM / FUNCTION SHALL FOLLOW PS-E.008.
- 2 CUT O-RING, ITEM 21, TO .20" (SHORTEN BY .13') BEFORE INSTALLING.
- 3 SLIT O-RING, ITEM 19, BEFORE INSTALLING.
- (N4) 4. ASSEMBLY SHALL BE WATER TESTED.
- 5 PLACE 5-035 ASSY IN A SEPARATE BAG.
- 6 INSTALLATION TORQUE: 30 LB-FT.
- 7 LUBRICATE SPRING WITH DOW III.
- (N8) 8 REWORK CARTRIDGE ASSY IF IT DOES NOT CLOSE BY ITSELF AFTER WATER TESTING
- 9 APPLY LOCTITE 242.
- 10 INSTALLATION TORQUE 11-14 LB-FT.
- 11 APPLY THIN FILM OF DOW CORNING III.
- 12 APPLY LOCTITE 680.



BILL OF MATERIAL (CURRENT LEVEL)

ITEM	PT/ASSY	DESCRIPTION	TYPE	QTY.
1	12075	WATER DISPENSER BODY, HOT	PART	1
2	11836	RETAINING RING	PART	1
3	12076	WATER DISPENSER BODY CAP	PART	1
4	50713	SPOUT, WATER DISP. (TRAD.)	PART	1
5	12077	ESCUTCHEON	PART	1
6	11733	SHELL, SPOUT, WATER DISP	PART	1
7	50768	RETAINER PLATE	PART	1
8	50770	NIPPLE	PART	1
9	91394	O-RING, #2-132, EPDM, 65-75 DURO	PART	1
10	92016	SCRW, 10-24 X 3/4 SKT HD FLT PT SS	PART	2
11	50068	INSERT, HOSE	PART	3
12	50066	COMPRESSION RING, 1/2	PART	3
13	91100	O-RING, #2-006, EPDM, 65-75 DURO	PART	3
14	91376	TUBE, RED, .250 OD X 4 FT	PART	1
15	91377	TUBE, BLUE, .250 OD X 4 FT	PART	1
16	91378	TUBE, HIGH TEMP, .250 OD X 4 FT	PART	1
17	10174	NUT, QUICK CONNECT	PART	1
18	5-035	COUPLING & INSERT ASM	ASSEMBLY	1
19	91382	O-RING, #2- 012, TEFLON,	PART	1
20	91017	O-RING, #2- 012, EPDM, 65-75 DURO, NSF 61	PART	2
21	91383	O-RING, #2- 014, TEFLON, NSF 61	PART	1
22	98043	TAG LABEL, HOT WATER WARNING	PART	1
23	91023	O-RING, #2- 019, EPDM, 65-75 DURO, NSF 61	PART	1
24	5-061	ADAPTER/CARTRIDGE ASSY	ASSEMBLY	1
25	12151	HANDLE	PART	1
26	92000	SCREW 8 - 32 X 1/8 SS	PART	1

ZONE	REV	DESCRIPTION	DATE	APPROVED
-	D	EN-3317	10/14/17	J.A
-	C	EN-2547	06/07/13	-
-	B	EN-2412	01/11/13	-
-	A	EN-2319	10/16/12	-
-	-	EN-2289	06/07/12	-

COPYRIGHT 2005 BRASSTECH, INC. THESE DRAWINGS AND THE DESIGNS DEPICTED HEREIN ARE THE PROPRIETARY PROPERTY OF BRASSTECH. ANY USE OR REPRODUCTION IS SUBJECT TO THE EXPRESS APPROVAL OF BRASSTECH. UNAUTHORIZED USE IS STRICTLY PROHIBITED. ALL RIGHTS RESERVED.

TESTING	-	-	-
ASSEMBLY	-	-	-
PLATING	-	-	-
POLISHING	-	NEXT ASSY	USED ON
MACHINING	-	APPLICATION	
TOOLING FIXTURE #	REMOVE ALL BURRS AND SHARP EDGES		

UNITS ARE: INCHES [MM]
TOLERANCES ARE:
FRACTIONS DECIMALS ANGLES
±1/16" .X ±.1 [2.5] ±1°
.XX ±.06 [1.5]

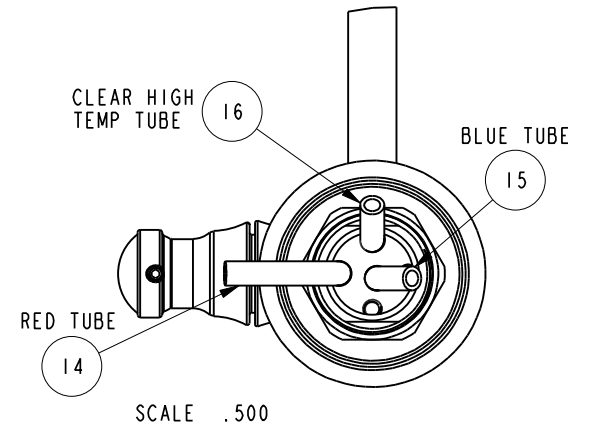
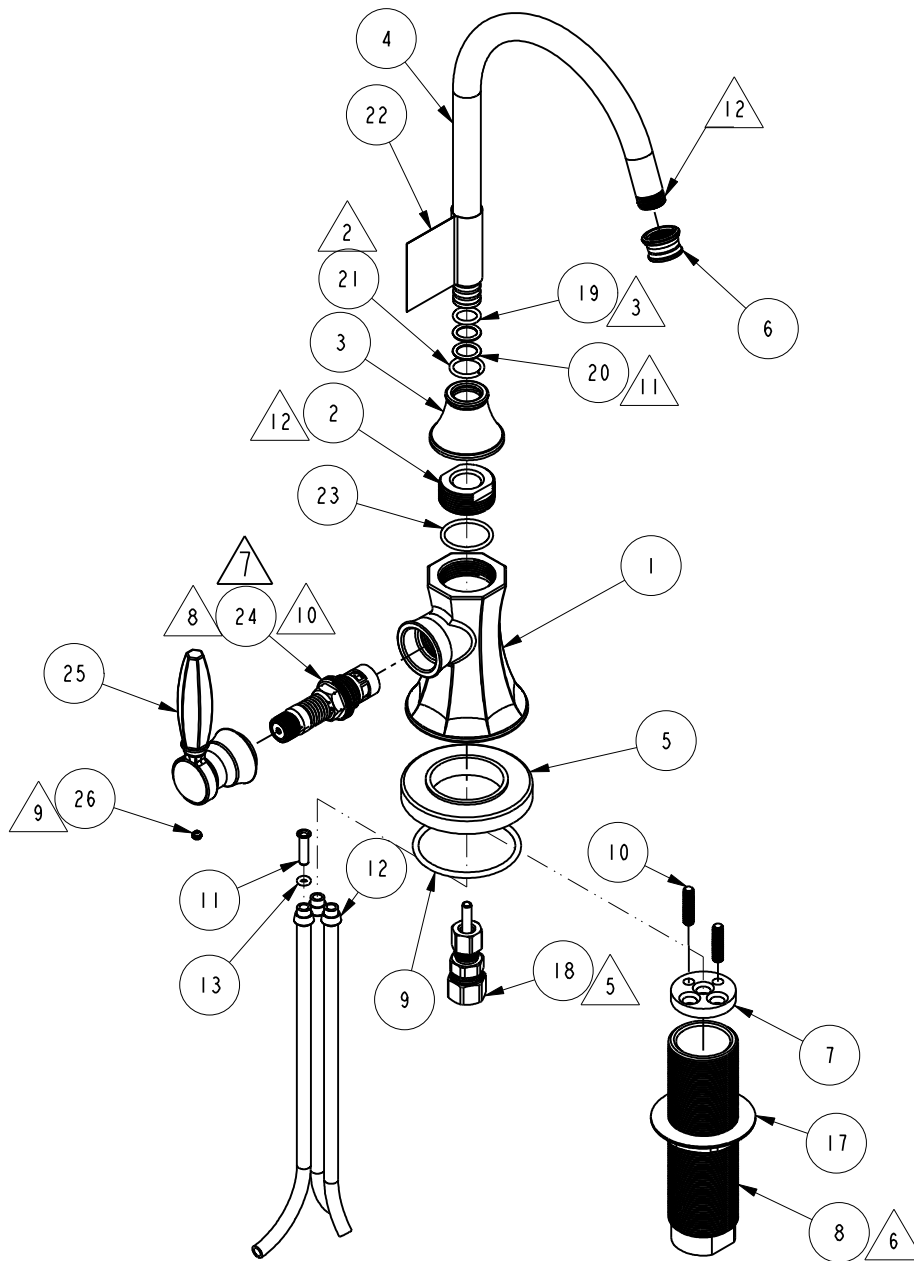
(X.XXX) DENOTES CRITICAL DIMS. ALL THREADS ARE CRITICAL

DRAWN	RAVINDRA	10/14/17
CHECKED	JINSON	10/14/17
APPROVED	J.A	10/14/17

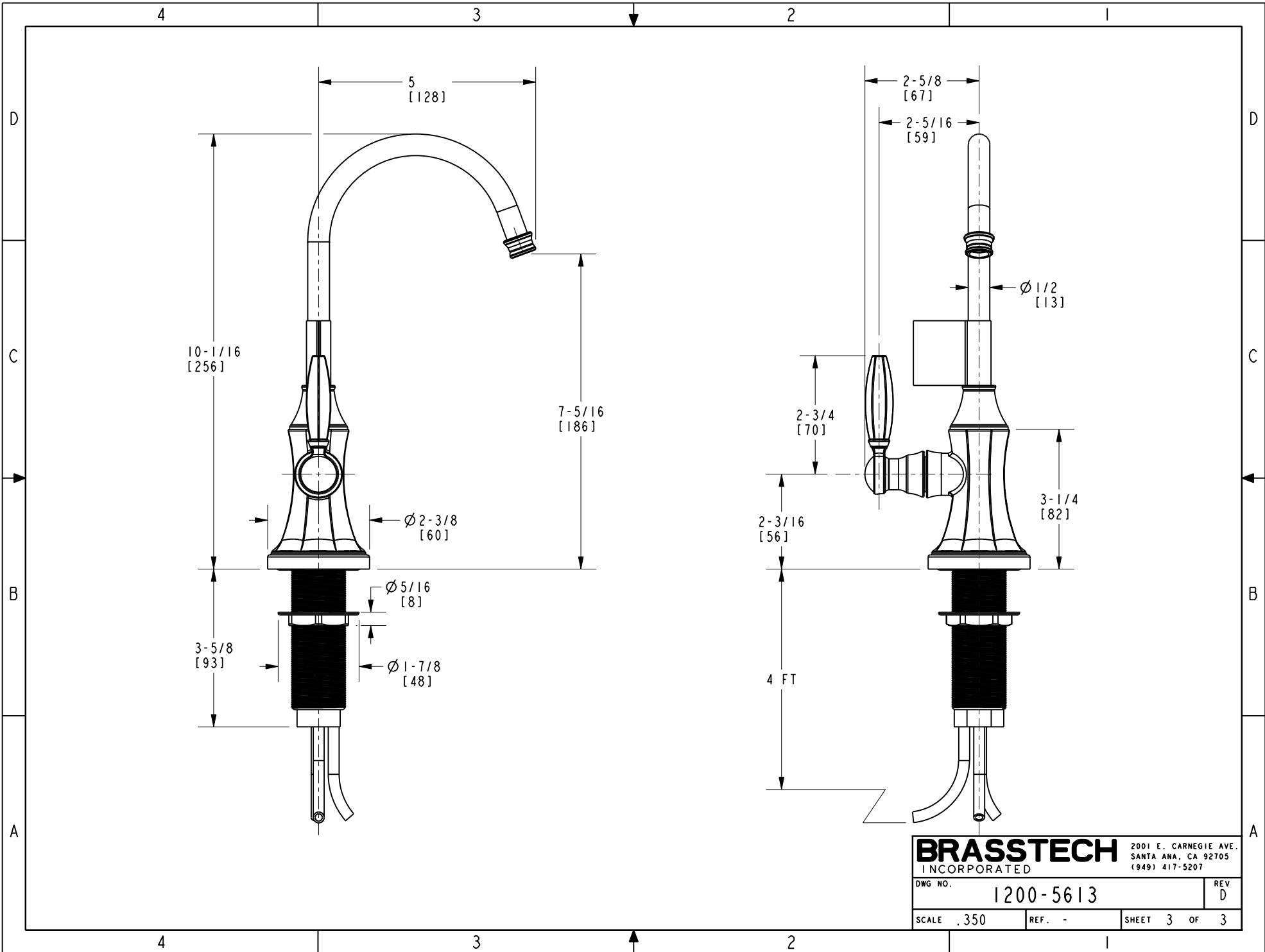
BRASSTECH 2001 CARNEGIE AVE. SANTA ANA, CA 92705 (949) 417-5207
INCORPORATED

METROPOLE HOT WATER DISPENSER

DWG NO.	1200-5613	REV	D
SCALE	.300	REF.	-
SHEET 1		OF 3	



BRASSTECH		2001 E. CARNEGIE AVE.	
INCORPORATED		SANTA ANA, CA 92705	
		(949) 417-5207	
DWG NO.	1200-5613	REV	D
SCALE .300	REF. -	SHEET 2	OF 3



BRASSTECH 2001 E. CARNEGIE AVE.
 INCORPORATED SANTA ANA, CA 92705
 (949) 417-5207

DWG NO.	1200-5613	REV	D
SCALE	.350	REF.	-
SHEET 3		OF 3	