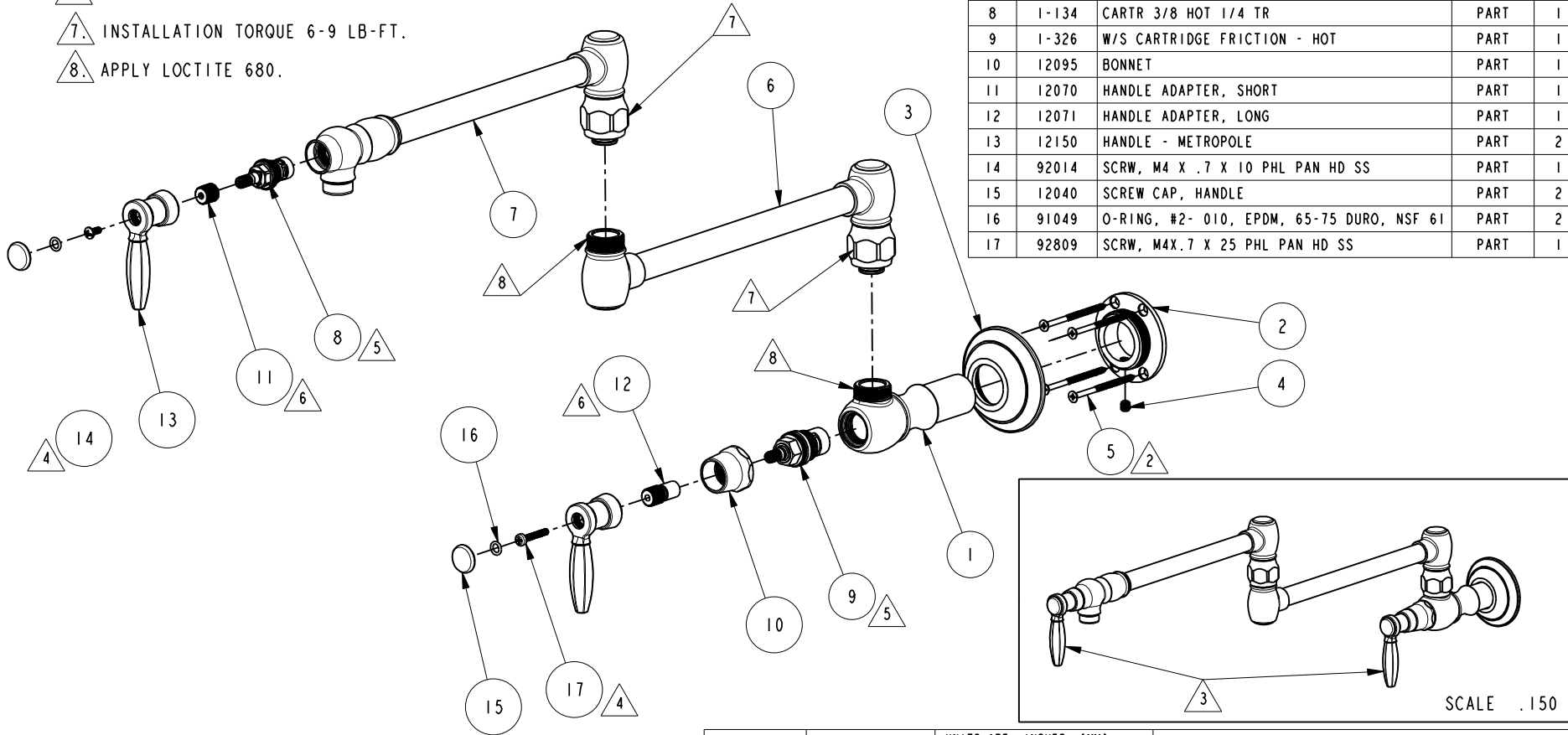


NOTES:

- (N1) 1. FIT / FORM / FUNCTION SHALL FOLLOW PS-E.008.
- 2. PACK THESE ITEMS IN A PLASTIC BAG.
- 3. HANDLE IN CLOSE POSITION.
- 4. APPLY LOW BONDING ADHESIVE. IF SCREW DOES NOT HAVE NYLON PATCH.
- 5. INSTALLATION TORQUE: 11-14 FT-LB.
- 6. ADJUST THIS ITEM TO OPTIMIZE HANDLE POSITION.
- 7. INSTALLATION TORQUE 6-9 LB-FT.
- 8. APPLY LOCTITE 680.



BILL OF MATERIAL (CURRENT LEVEL)

ITEM	PT/ASSY	DESCRIPTION	TYPE	QTY.
1	11299	VALVE BODY, WALL-END	PART	1
2	11301	FLANGE, MOUNTING	PART	1
3	2-555	FLANGE ASM, TRAD	ASSEMBLY	1
4	92231	SCRW, 1/4-20 X 1/4 SKT HD CUP PT SS	PART	1
5	92223	SCRW, #8 X 2-1/2 PHL FLT HD SS	PART	4
6	2-550	LOWER ARM ASM, TRAD	ASSEMBLY	1
7	2-549	UPPER ARM ASM, TRAD	ASSEMBLY	1
8	1-134	CARTR 3/8 HOT 1/4 TR	PART	1
9	1-326	W/S CARTRIDGE FRICTION - HOT	PART	1
10	12095	BONNET	PART	1
11	12070	HANDLE ADAPTER, SHORT	PART	1
12	12071	HANDLE ADAPTER, LONG	PART	1
13	12150	HANDLE - METROPOLE	PART	2
14	92014	SCRW, M4 X .7 X 10 PHL PAN HD SS	PART	1
15	12040	SCREW CAP, HANDLE	PART	2
16	91049	O-RING, #2- 010, EPDM, 65-75 DURO, NSF 61	PART	2
17	92809	SCRW, M4X.7 X 25 PHL PAN HD SS	PART	1

UNITS ARE: INCHES [MM]  
 TOLERANCES ARE:  
 FRACTIONS DECIMALS ANGLES  
 $\pm 1/16"$   $.X \pm .1$  [2.5]  $\pm 1^\circ$   
 $.XX \pm .06$  [1.5]

(X.XXX) DENOTES CRITICAL DIMS.  
 ALL THREADS ARE CRITICAL

**BRASSTECH** 2001 CARNEGIE AVE.  
 INCORPORATED SANTA ANA, CA 92705  
 (949) 417-5207

METROPOLE POT FILLER, WALL-MOUNT

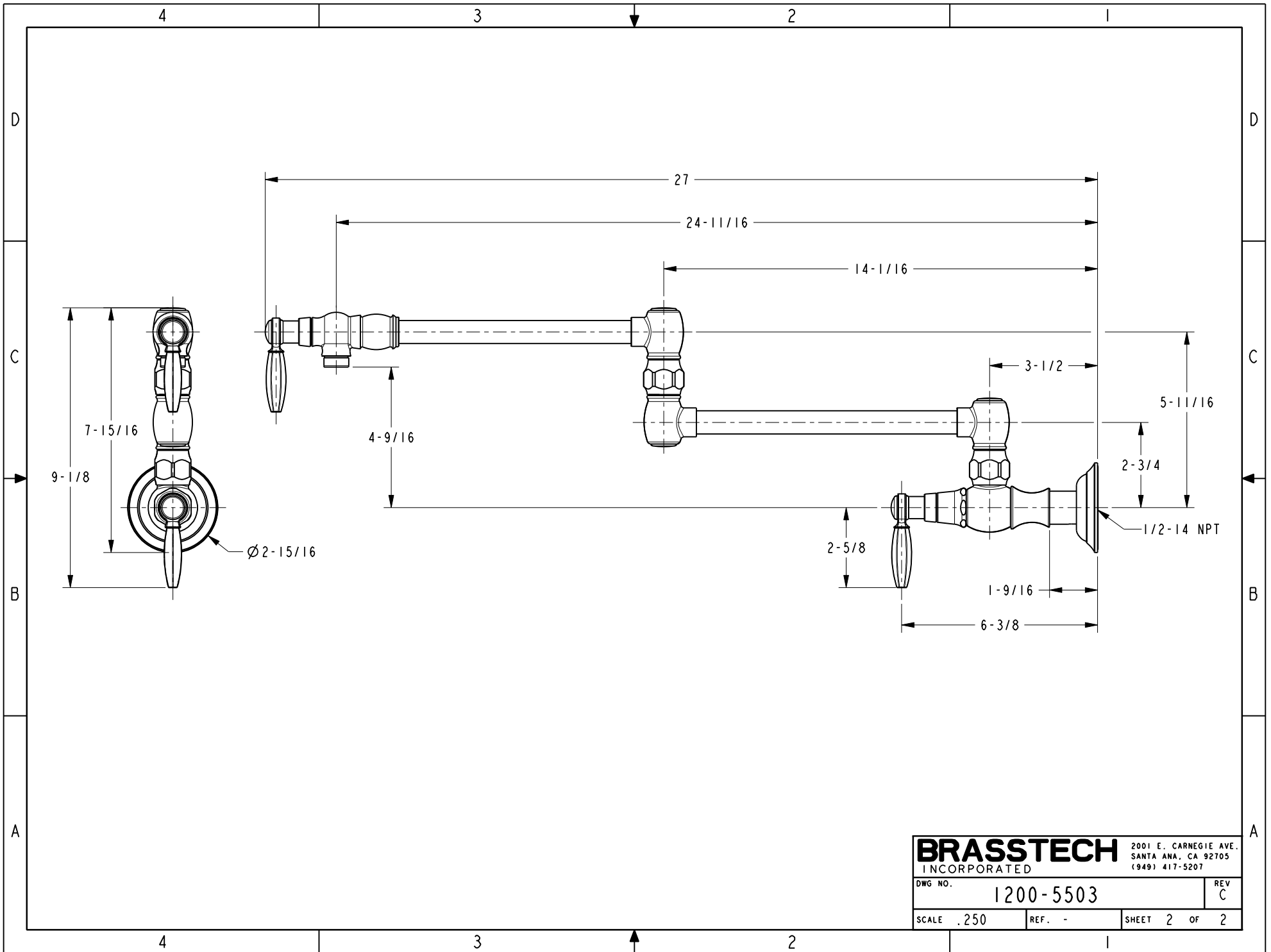
ZONE	REV	DESCRIPTION	DATE	APPROVED
-	A	EN-3495	03/26/18	J.A.
-	B	EN-2874	10/01/15	N.S.
-	A	EN-2405	01/07/13	A.N.
-	-	EN-2202	07/31/12	A.N.

COPYRIGHT 2005 BRASSTECH, INC.  
 THESE DRAWINGS AND THE DESIGNS  
 DEPICTED HEREIN ARE THE PROPRIETARY  
 PROPERTY OF BRASSTECH. ANY USE  
 OR REPRODUCTION IS SUBJECT TO  
 THE EXPRESS APPROVAL OF BRASSTECH.  
 UNAUTHORIZED USE IS STRICTLY  
 PROHIBITED. ALL RIGHTS RESERVED.

TESTING	ASSEMBLY	PLATING	POLISHING	MACHINING	TOOLING FIXTURE #	APPLICATION
-	-	-	-	-	-	REMOVE ALL BURRS AND SHARP EDGES

DRAWN	CHECKED	APPROVED
JINSON 03/26/18	J.A. 03/26/18	J.A. 03/26/18

DWG NO.	REV	SCALE	REF.	SHEET	OF
1200-5503	C	.230	-	1	2



<b>BRASSTECH</b>		2001 E. CARNEGIE AVE.	
INCORPORATED		SANTA ANA, CA 92705	
DWG NO. 1200-5503		REV C	
SCALE .250	REF. -	SHEET 2 OF 2	