

4

3

2

1

NOTES:

(N1) 1. FIT / FORM / FUNCTION SHALL FOLLOW PS-E.008.

2 APPLY LOCTITE 680.

3 SLIT AND SHORTEN O-RING BY .13" TO .20" IN LENGTH BEFORE INSTALLING.

4 SLIT O-RING BEFORE INSTALLING.

5 INSTALLATION TORQUE: 8 - 14 LB-FT.

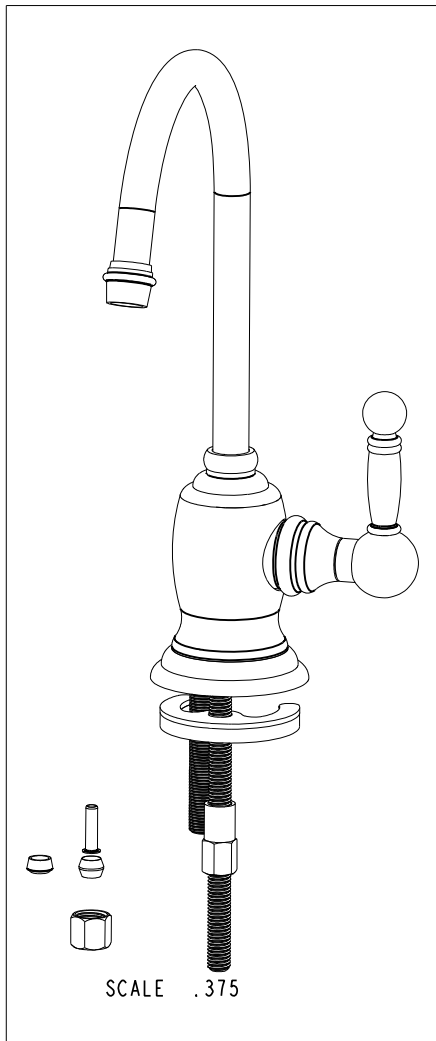
(N6) 6 WATER TEST WHOLE UNIT.

7 BAG 5-007 IN A SEPARATE BAG.

8 APPLY THIN FILM OF DOW CORNING 111.

9 APPLY LOCTITE 242.

**10 INSTALLATION TORQUE 10-14 LB-IN**



SCALE .375

BILL OF MATERIAL (CURRENT LEVEL)

Table with 5 columns: ITEM, PT/ASSY, DESCRIPTION, TYPE, QTY. Lists 26 items for a cold water dispenser assembly.

Revision table with columns: H, EN (part number), 10/05/17 (date), V.V. (approved).

COPYRIGHT 2005 BRASSTECH, INC. THESE DRAWINGS AND THE DESIGNS DEPICTED HEREIN ARE THE PROPRIETARY PROPERTY OF BRASSTECH. ANY USE OR REPRODUCTION IS SUBJECT TO THE EXPRESS APPROVAL OF BRASSTECH. UNAUTHORIZED USE IS STRICTLY PROHIBITED. ALL RIGHTS RESERVED.

Manufacturing process table with columns: TESTING, ASSEMBLY, PLATING, POLISHING, MACHINING, TOOLING FIXTURE #.

UNITS ARE: INCHES [MM] TOLERANCES ARE:

FRACTIONS DECIMALS ANGLES ±1/16" .X ±.1 [2.5] ±1° .XX ±.06 [1.5]

(X.XXX) DENOTES CRITICAL DIMS. ALL THREADS ARE CRITICAL

Approval table with columns: DRAWN, CHECKED, APPROVED, C.GAYOSSO, 10/05/17, V.VU, 10/05/17, 10/05/17.

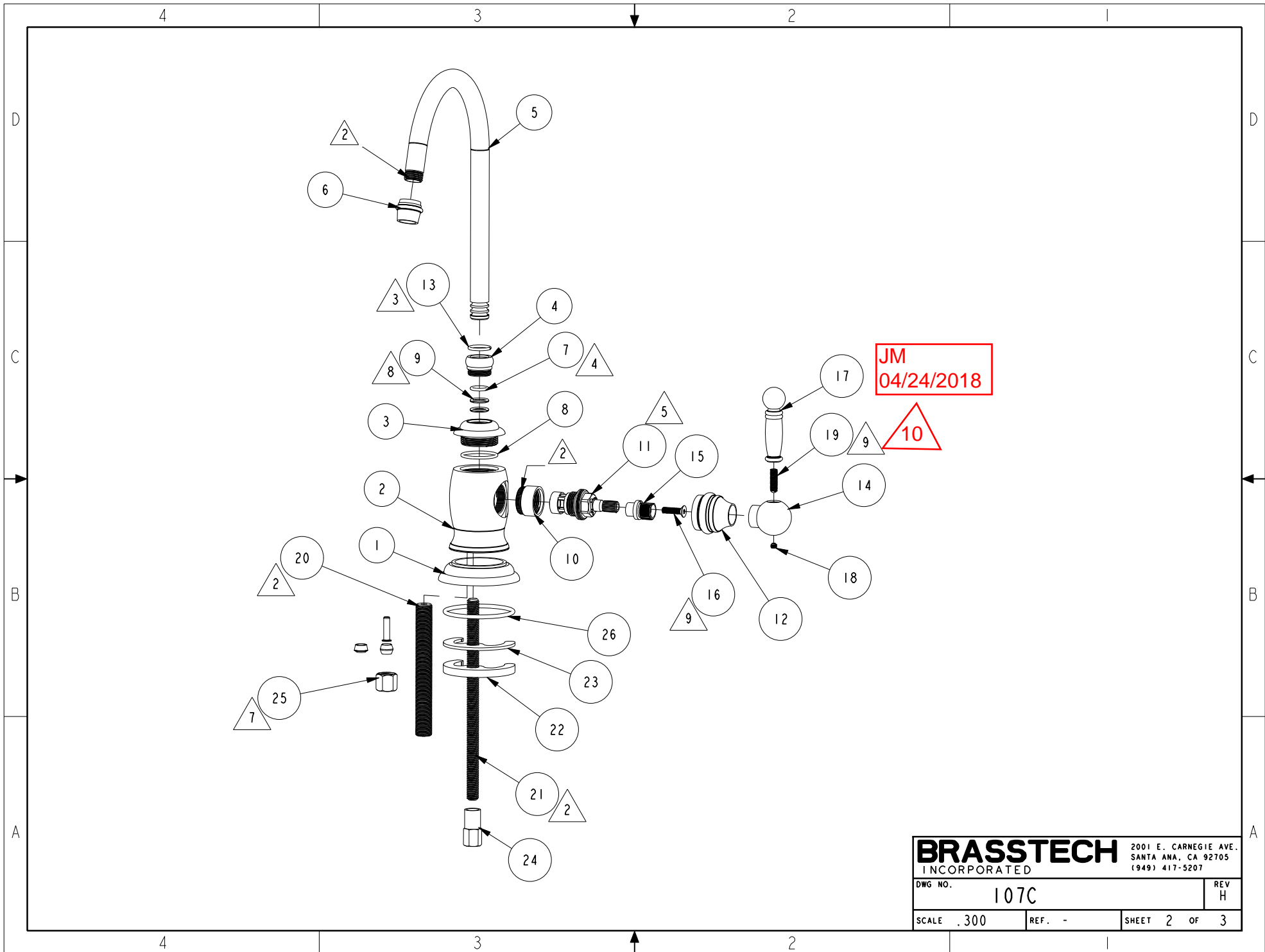
BRASSTECH INCORPORATED logo and address, followed by COLD WATER DISP, LEVER TRAD, DWG NO. 107C, SCALE .300, SHEET 1 OF 3.

4

3

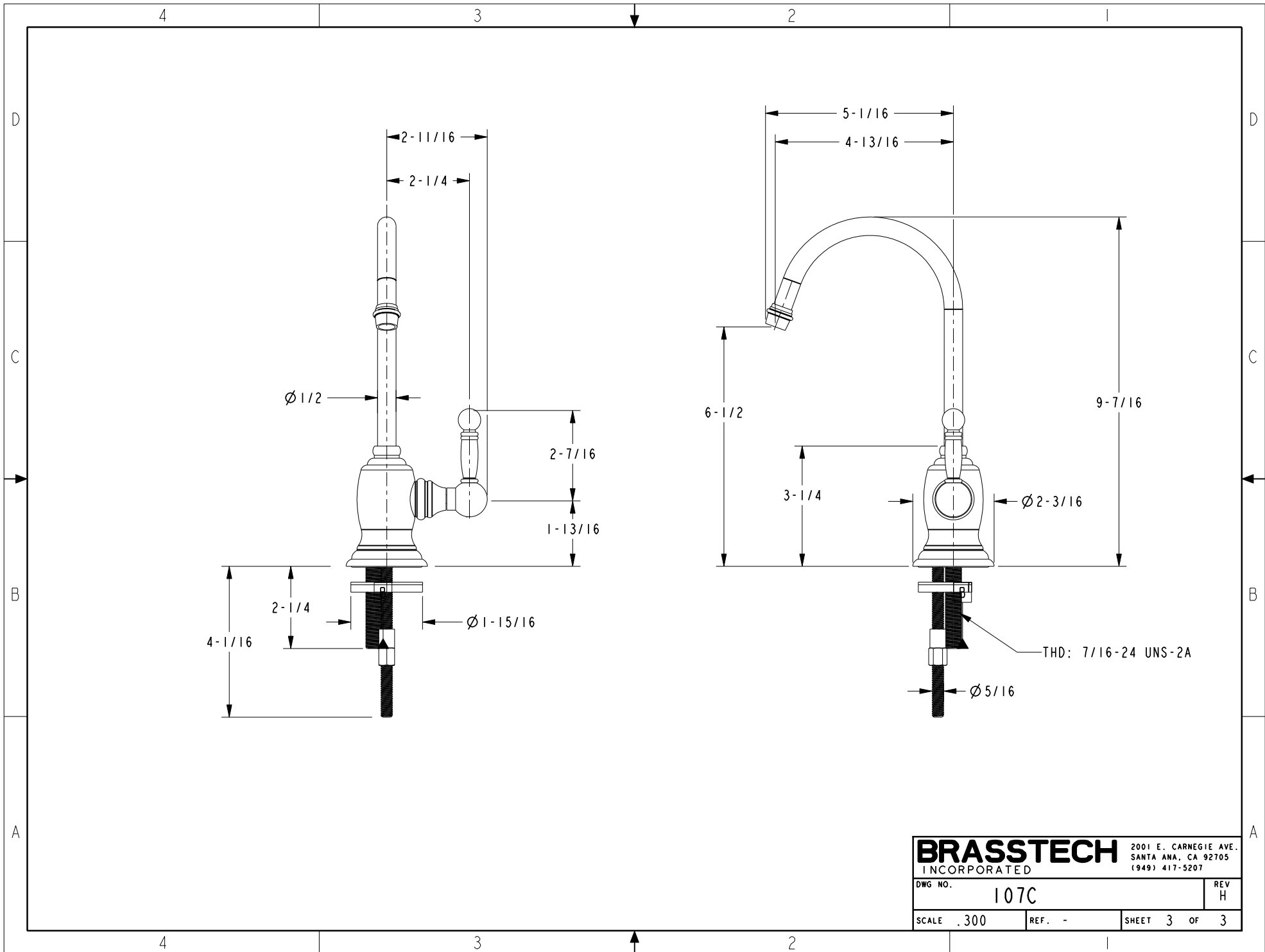
2

1



**BRASSTECH** 2001 E. CARNEGIE AVE.  
 INCORPORATED SANTA ANA, CA 92705  
 (949) 417-5207

DWG NO.	107C	REV	H
SCALE	.300	REF.	-
		SHEET	2 OF 3



<b>BRASSTECH</b>		2001 E. CARNEGIE AVE.	
INCORPORATED		SANTA ANA, CA 92705	
DWG NO. 107C		REV H	
SCALE .300	REF. -	SHEET 3 OF 3	