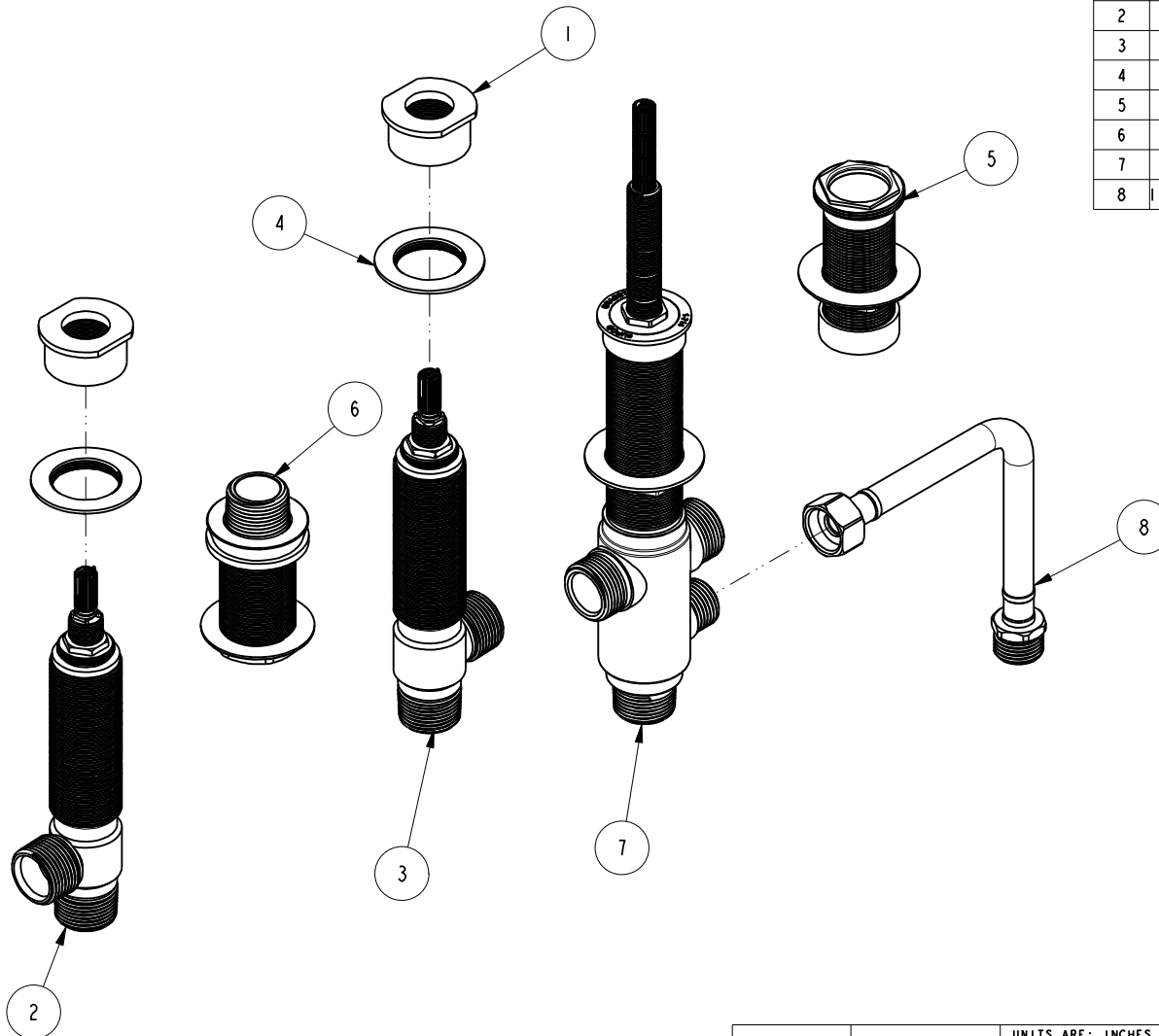


NOTES:

(NI) 1. FIT / FORM / FUNCTION SHALL FOLLOW PS-E.008.

BILL OF MATERIAL (CURRENT LEVEL)

ITEM	PT/ASSY	DESCRIPTION	TYPE	QTY.
1	12280	R/T-INVERT_FLANGE NUT	PART	2
2	1-552	R/T CART / VALVE ASSY - HOT	ASSEMBLY	1
3	1-553	R/T CARTR / VALVE ASSY - COLD	ASSEMBLY	1
4	10529	MOUNTING NUT	PART	2
5	5-057	MOUNTING HDW FOR DECK FLANGE	ASSEMBLY	1
6	1-016	ROMAN TUB QUICK DISCONNECT	ASSEMBLY	1
7	1-714	R/T VALVE DIVERTER	ASSEMBLY	1
8	12302-XX6	HOSE, 36 INCHES	ASSEMBLY	1



ZONE	REV	DESCRIPTION	DATE	APPROVED
-	D	EN-3222E	11/23/17	J.A.
-	C	EN-2541-1	09/05/14	-
-	B	EN-2036	01/17/12	-
-	A	EN-1755	05/27/11	-
-	-	EN-1265	10/30/09	-

COPYRIGHT 2005 BRASSTECH, INC. THESE DRAWINGS AND THE DESIGNS DEPICTED HEREIN ARE THE PROPRIETARY PROPERTY OF BRASSTECH. ANY USE OR REPRODUCTION IS SUBJECT TO THE EXPRESS APPROVAL OF BRASSTECH. UNAUTHORIZED USE IS STRICTLY PROHIBITED. ALL RIGHTS RESERVED.

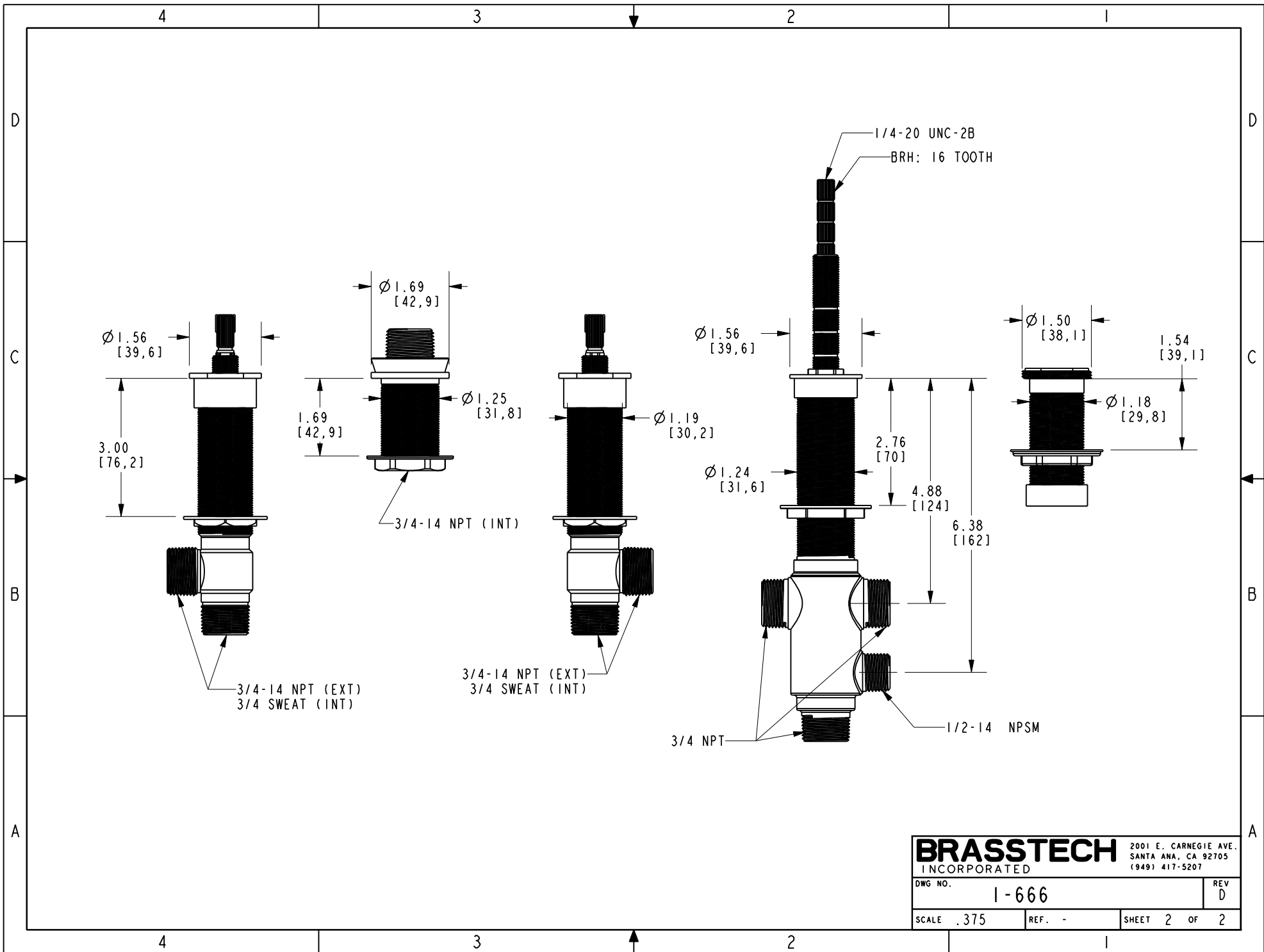
TESTING	ASSEMBLY	PLATING	POLISHING	MACHINING	TOOLING FIXTURE #
-	-	-	-	-	-
					APPLICATION
					REMOVE ALL BURRS AND SHARP EDGES

UNITS ARE: INCHES [MM]	TOLERANCES ARE:
FRACTIONS DECIMALS	ANGLES
±1/16"	.X ±.1 [2.5] ±1°
	.XX ±.06 [1.5]
(X.XXX) DENOTES CRITICAL DIMS. ALL THREADS ARE CRITICAL	
DRAWN	JINSON 11/23/17
CHECKED	J.A. 11/23/17
APPROVED	J.A. 11/23/17

BRASSTECH 2001 CARNEGIE AVE. SANTA ANA, CA 92705 (949) 417-5207
INCORPORATED

R/T 3 VALVE ASSY ROUGH

DWG NO. 1-666	REV D
SCALE .325	REF. - SHEET 1 OF 2



BRASSTECH		2001 E. CARNEGIE AVE. SANTA ANA, CA 92705 (949) 417-5207	
DWG NO.	1-666	REV	D
SCALE .375	REF. -	SHEET 2	OF 2