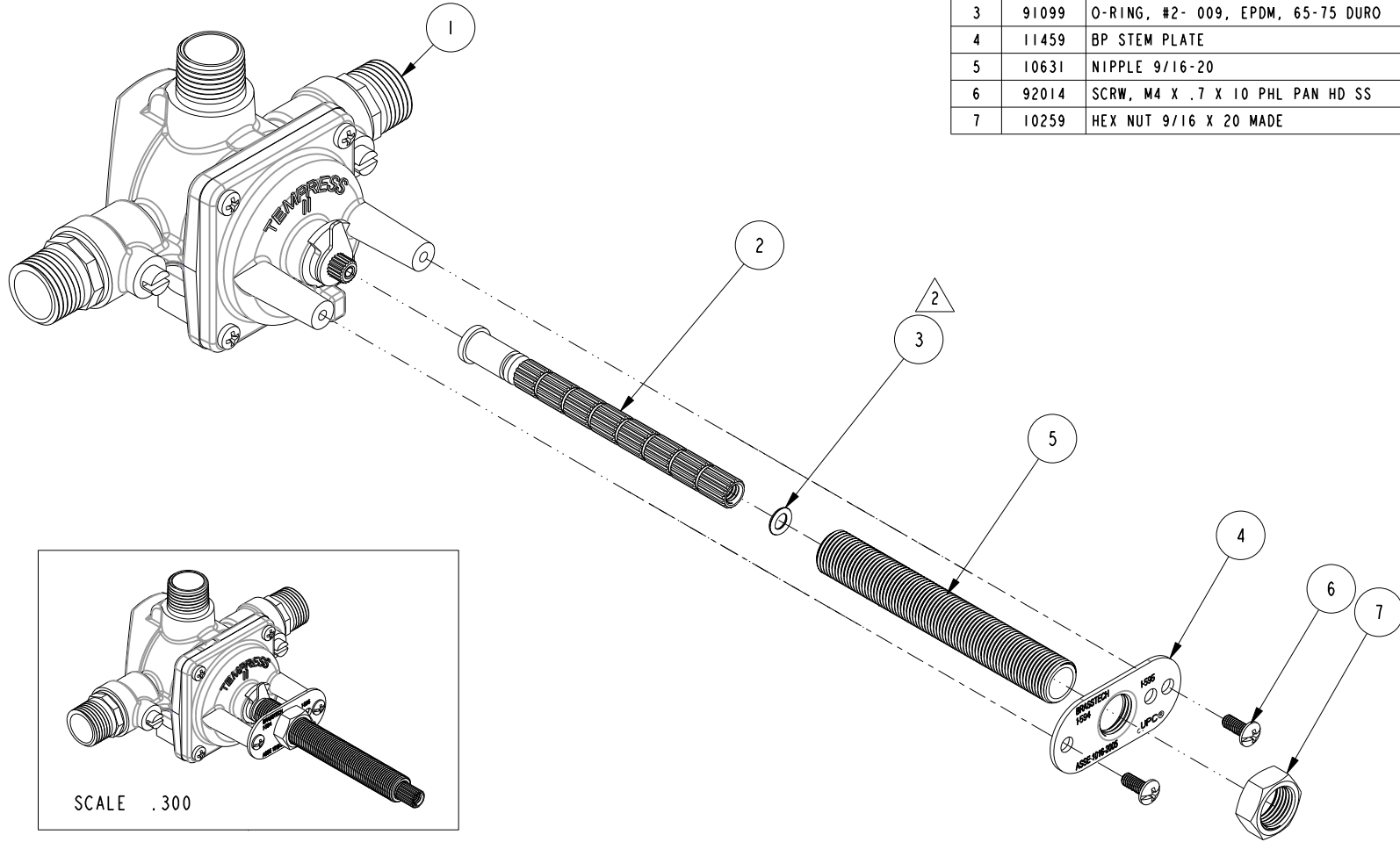


NOTES:

- 1. FIT / FORM / FUNCTION SHALL FOLLOW PS-E.008.
- 2. APPLY LIGHT FILM OF DOW CORNING III SILICONE COMPOUND.



BILL OF MATERIAL (CURRENT LEVEL)				
ITEM	PT/ASSY	DESCRIPTION	TYPE	QTY.
1	1-208	BP VALVE ASM W/O DIVERTER	ASSEMBLY	1
2	11349	STEM, 16T- EXT FULL BROACH	PART	1
3	91099	O-RING, #2- 009, EPDM, 65-75 DURO	PART	1
4	11459	BP STEM PLATE	PART	1
5	10631	NIPPLE 9/16-20	PART	1
6	92014	SCRW, M4 X .7 X 10 PHL PAN HD SS	PART	2
7	10259	HEX NUT 9/16 X 20 MADE	PART	1

SCALE .300

-	C	EN-3285	03/13/17	J.A.
-	B	EN-2600	09/23/13	-
-	A	EN-2034	01/03/12	-
-	-	EN-1183	03/23/09	-
ZONE	REV	DESCRIPTION	DATE	APPROVED

COPYRIGHT 2005 BRASSTECH, INC. THESE DRAWINGS AND THE DESIGNS DEPICTED HEREIN ARE THE PROPRIETARY PROPERTY OF BRASSTECH. ANY USE OR REPRODUCTION IS SUBJECT TO THE EXPRESS APPROVAL OF BRASSTECH. UNAUTHORIZED USE IS STRICTLY PROHIBITED. ALL RIGHTS RESERVED.

TESTING	-	-	-
ASSEMBLY	-	-	-
PLATING	-	1034BP	1034BP
POLISHING	-	NEXT ASSY	USED ON
MACHINING	-	APPLICATION	
TOOLING FIXTURE #	REMOVE ALL BURRS AND SHARP EDGES		

UNITS ARE: INCHES [MM]
TOLERANCES ARE:
FRACTIONS DECIMALS ANGLES
±1/16" .X ±.1 [2.5] ±1°
.XX ±.06 [1.5]

(X.XXX) DENOTES CRITICAL DIMS.
ALL THREADS ARE CRITICAL

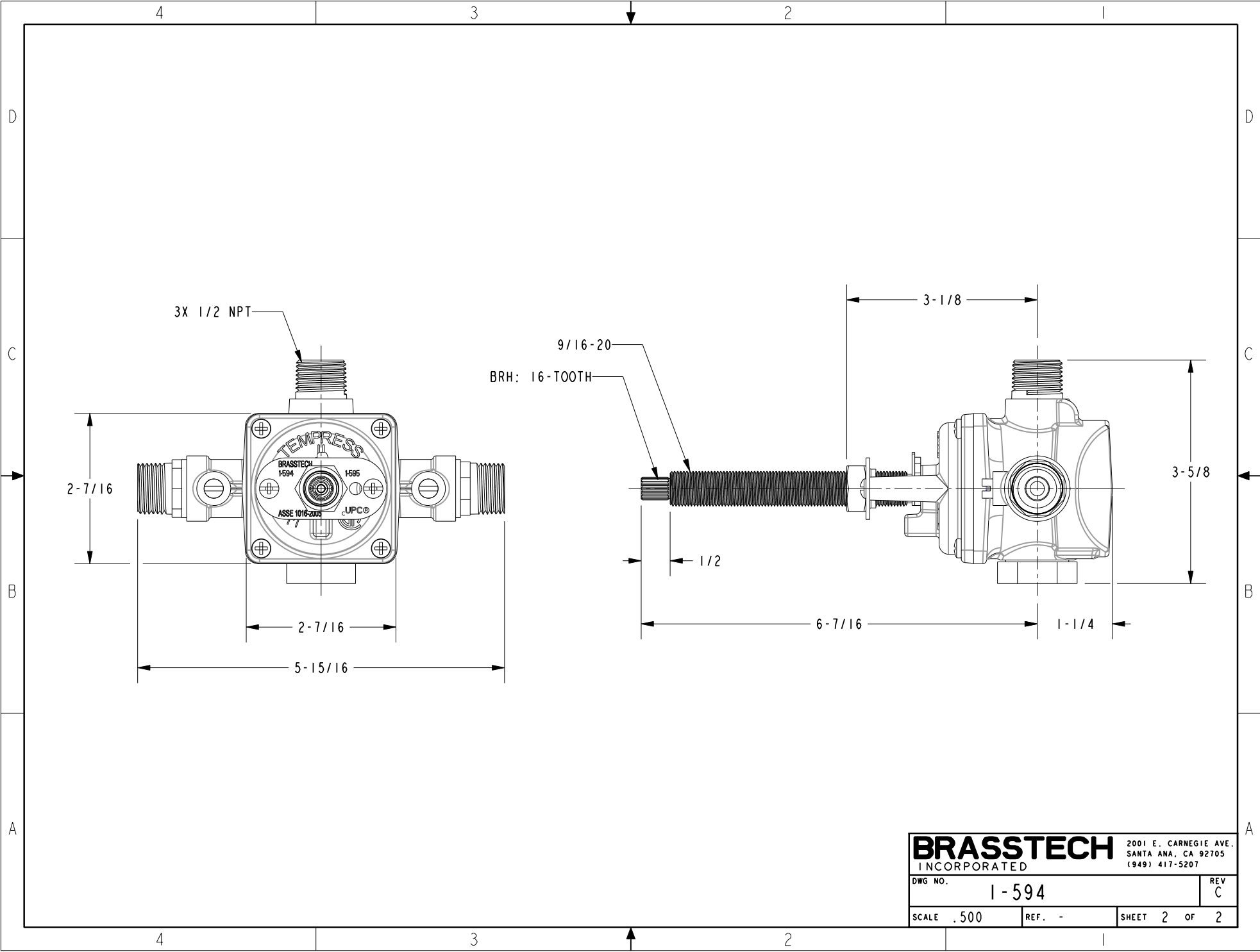
DRAWN JINSON 03/13/17
CHECKED RAVINDRA 03/13/17
APPROVED J.A. 03/13/17

BRASSTECH 2001 CARNEGIE AVE.
INCORPORATED SANTA ANA, CA 92705
(949) 417-5207

BP VALVE ASM W/O DIVERTER

DWG NO. **1-594** REV C

SCALE .500 REF. - SHEET 1 OF 2



3X 1/2 NPT

2-7/16

2-7/16

5-15/16

TEMPRESS
BRASSTECH
1594
1595
ASSE 1016-2001
UPC®

9/16-20
BRH: 16-TOOTH

1/2

6-7/16

3-1/8

3-5/8

1-1/4

BRASSTECH		2001 E. CARNEGIE AVE. SANTA ANA, CA 92705 (949) 417-5207	
DWG NO.	1-594	REV	C
SCALE	.500	REF.	-
		SHEET	2 OF 2