

4

3

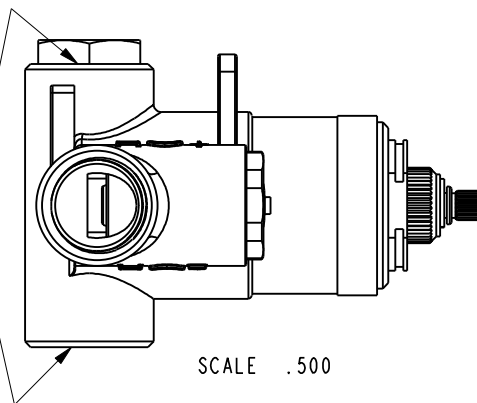
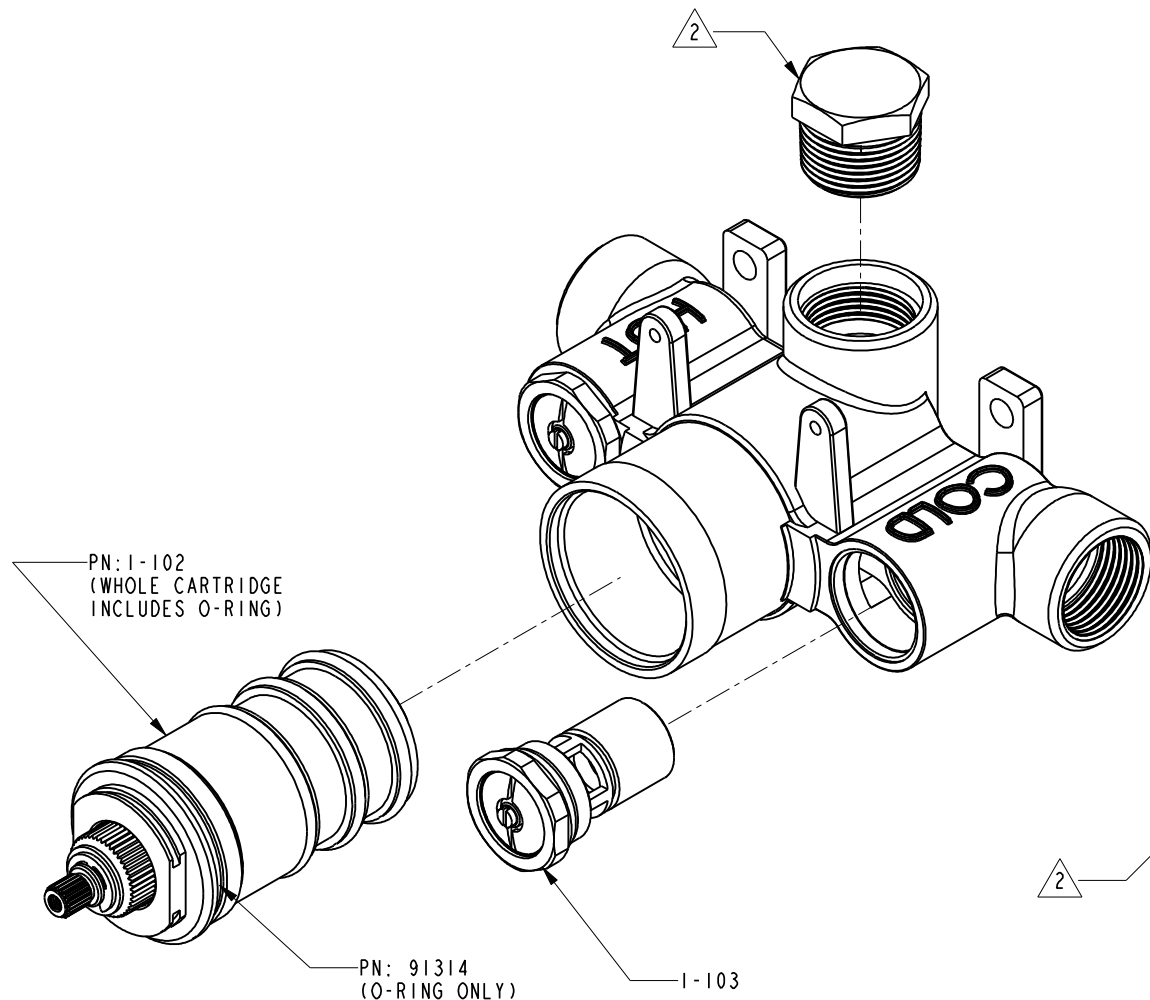
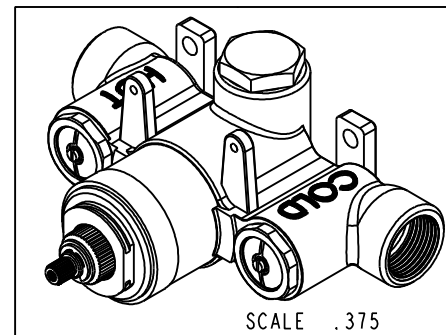
2

NOTES:

- (N1) 1. FIT / FORM / FUNCTION SHALL FOLLOW PS-E.008.
- 2. FOR PROPER VALVE OPERATION, THE 3/4" NPT PLUG SUPPLIED WITH VALVE ASSY MUST BE USED ON ONE OF TWO OUTLET PORTS.

BILL OF MATERIAL (CURRENT LEVEL)

ITEM	PT/ASSY	DESCRIPTION	TYPE	QTY.
1	1-583	1-540 AS RECEIVED	ASSEMBLY	1



-	C	EN-2854	09/16/16	J.M.
-	B	EN-2067	02/08/12	-
-	A	REF EO-0651	2/15/06	-
-	A	EO-0078	9/16/02	-
-	-	RELEASED	3/1/01	-
ZONE	REV	DESCRIPTION	DATE	APPROVED

COPYRIGHT 2005 BRASSTECH, INC.
THESE DRAWINGS AND THE DESIGNS
DEPICTED HEREIN ARE THE PROPRIETARY
PROPERTY OF BRASSTECH. ANY USE
OR REPRODUCTION IS SUBJECT TO
THE EXPRESS APPROVAL OF BRASSTECH.
UNAUTHORIZED USE IS STRICTLY
PROHIBITED. ALL RIGHTS RESERVED.

TESTING	-	-	-
ASSEMBLY	-	-	-
PLATING	-	3-1604tr	3-1604tr
POLISHING	-	NEXT ASSY	USED ON
MACHINING	-	APPLICATION	
TOOLING FIXTURE #	REMOVE ALL BURRS AND SHARP EDGES		

UNITS ARE: INCHES [MM]
TOLERANCES ARE:
FRACTIONS DECIMALS ANGLES
 $\pm 1/16"$ $.X \pm .1$ [2,5] $\pm 1^\circ$
 $.XX \pm .06$ [1,5]

(X.XXX) DENOTES CRITICAL DIMS.
ALL THREADS ARE CRITICAL

DRAWN	VINAY	09/16/16
CHECKED	JINSON	09/16/16
APPROVED	J.M.	09/16/16

BRASSTECH 2001 CARNEGIE AVE.
INCORPORATED SANTA ANA, CA 92705
(949) 417-5207

THERMOSTATIC VALVE ASSEMBLY

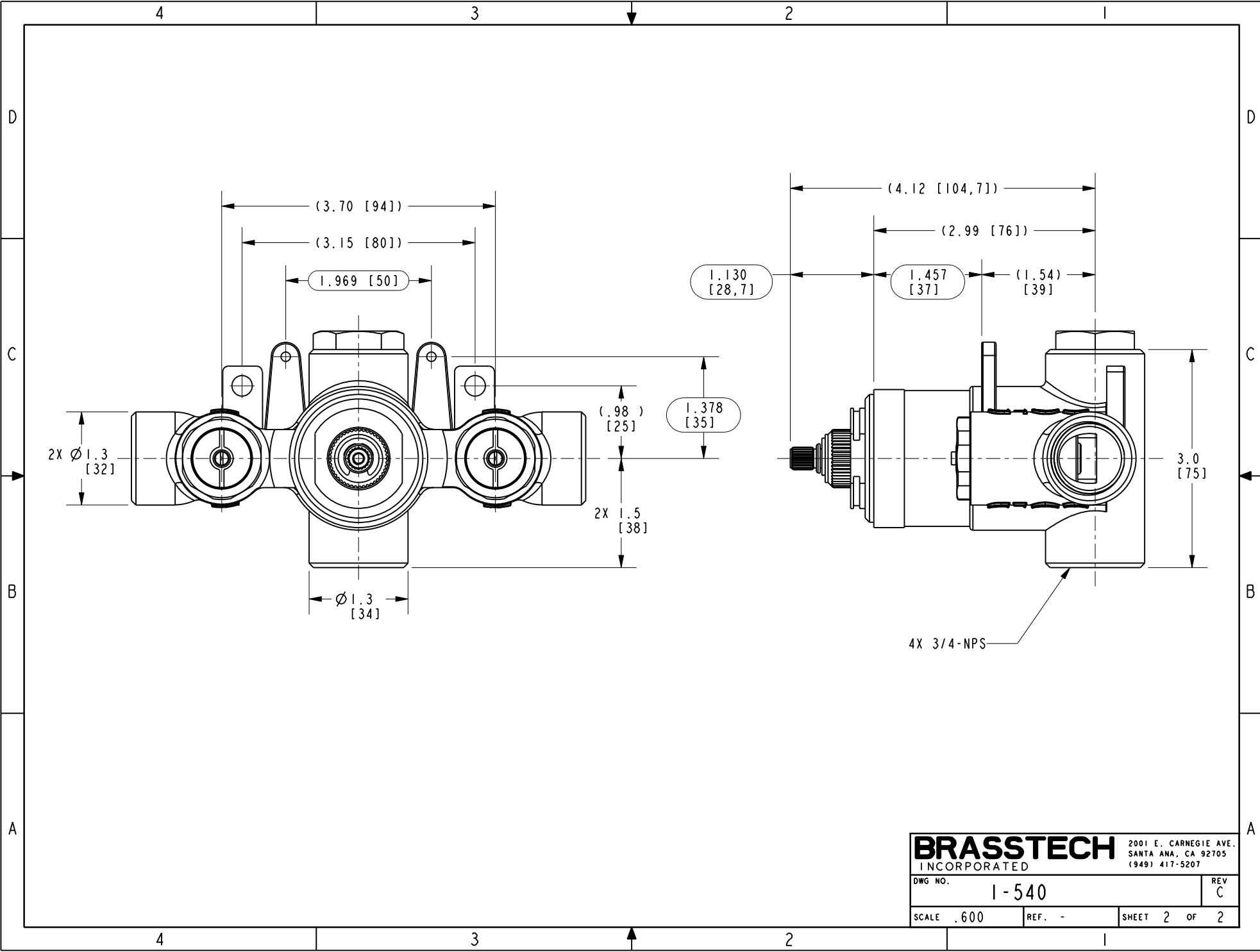
DWG NO.	1-540		REV	C
SCALE	.600	REF.	-	SHEET 1 OF 2

4

3

2

1



BRASSTECH		2001 E. CARNEGIE AVE.
INCORPORATED		SANTA ANA, CA 92705
		(949) 417-5207
DWG NO.	1-540	REV C
SCALE .600	REF. -	SHEET 2 OF 2